

**Goodhue
County**
MINNESOTA

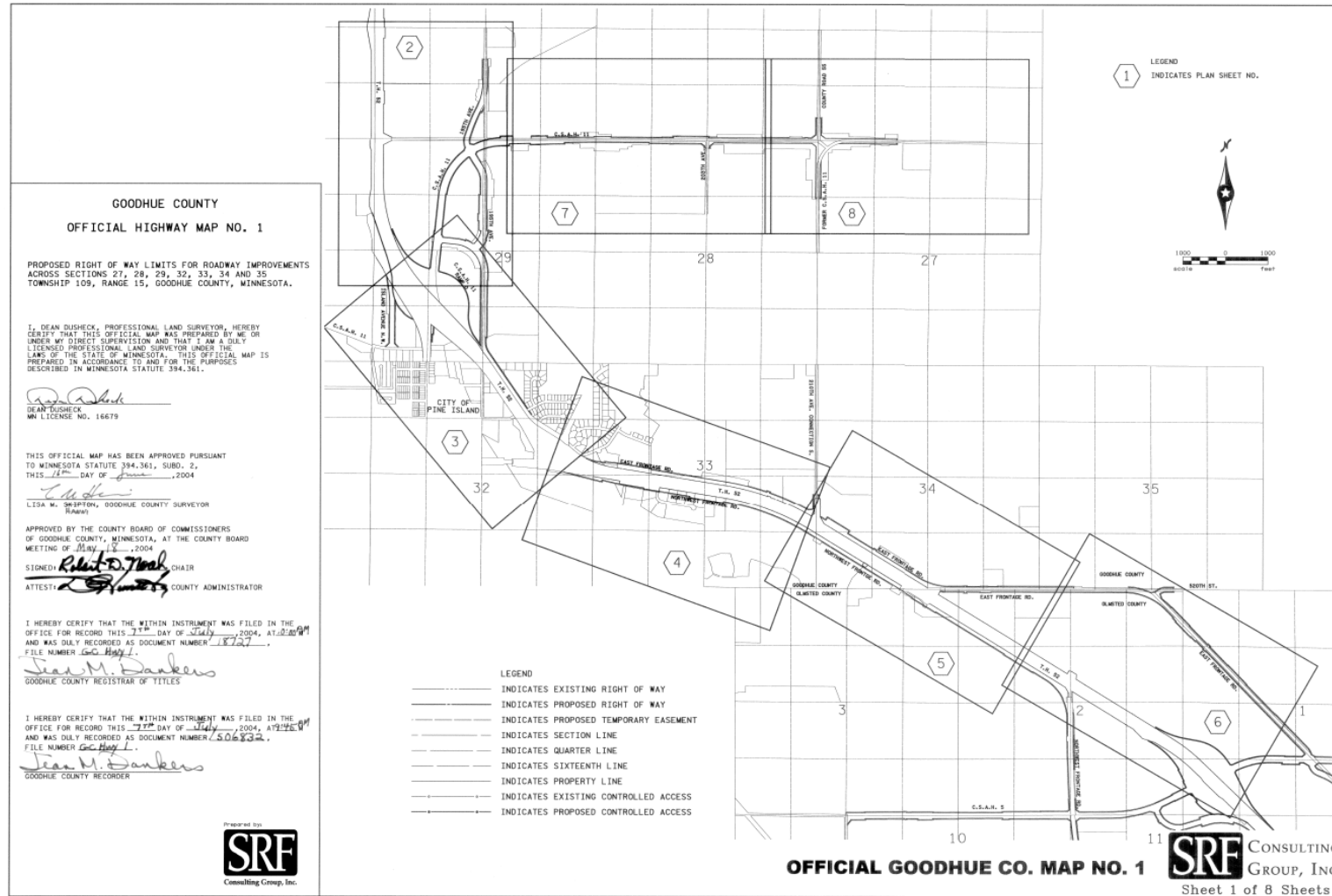
Repeal Goodhue Co. Official Map #1

Committee of the Whole
February 18, 2025

Agenda

- History of Official Map #1
- CSAH 11
- City of Pine Island Request
- Process and Next Steps
- Questions/Discussion

Goodhue Co. Official Map #1



Goodhue Co. Official Map #1

- Adopted in 2004
- Pine Island, Goodhue Co., Olmsted Co.
- Goodhue Co.
 - Affects CSAH 11
 - Includes various frontage roads
- Not an acquisition of property

CSAH 11

2004 Plans

- Proposed realignment of CSAH 11
 - From US 52 to CR 55
 - Utilizes 500th St.
 - New interchange in Pine Island
- Elk Run Interchange in Olmsted Co.

CSAH 11

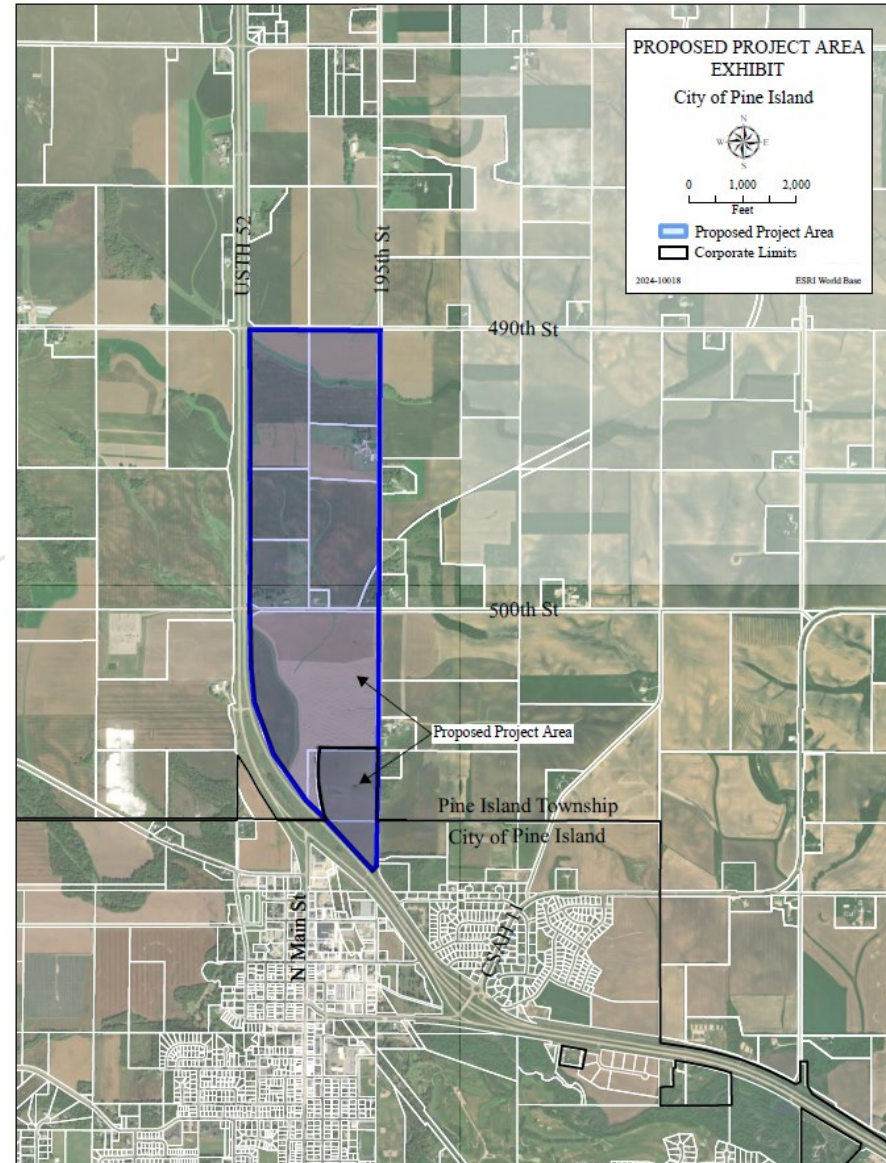
Current Plans

- Development has not occurred as expected
- North interchange not supported by MnDOT
- CSAH 11 serves County's needs
 - Utilizes existing interchange in the City
 - Provides connection to Wabasha Co.
 - County plans to reconstruct in 2026

Request

- City contacted County in November 2024
- Requested repeal of Official Map #1
- Proposed light industrial development
- Council resolution in January 2025 supporting repeal

Proposed Development



Process and Next Steps

- 10-day Notice of Public Hearing
- Planning Commission Public Hearing – March 17, 2025
- Goodhue County Board of Commissioners – April 1, 2025
- Recording of documents

Questions/Discussion