



**Goodhue
County**
MINNESOTA

Public Career Pathways

May 2026

Goodhue County by the numbers

- 48,000 residents
- 10 cities
- 21 townships
- 780 sq. miles
- 70% farmland

County Government

- 380 Employees + summer help
- \$102 million Budget
- 12 Departments
- 6 Buildings in Red Wing & shops in Kenyon, Cannon Falls, Zumbrota
- Parks & Trails



**Goodhue
County**
MINNESOTA

Working in County Government



**Goodhue
County**
MINNESOTA

Public Works

Cory Wersal
Construction Manager

Goodhue County Public Works

Engineering



Maintenance



Recycling Center



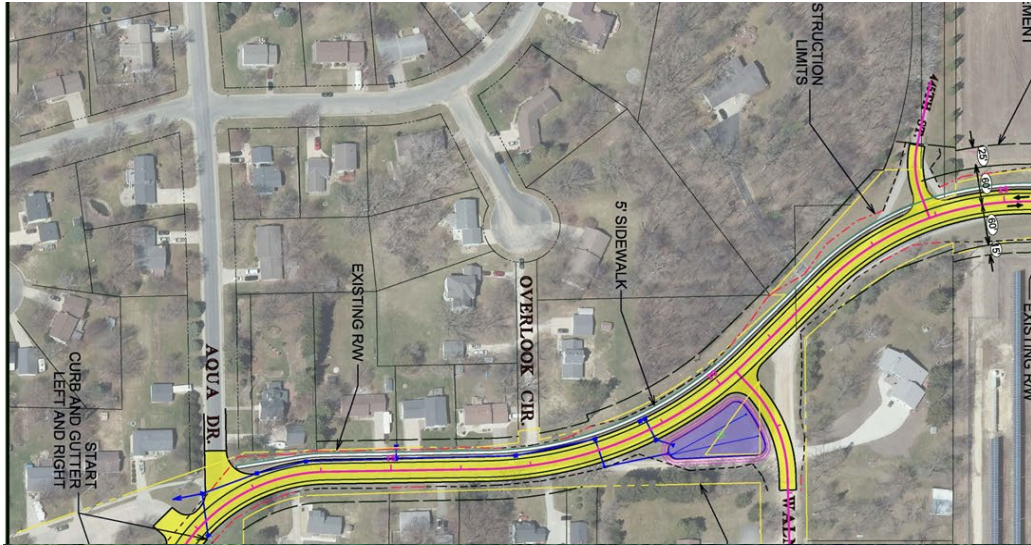
Parks & Trails



Current Openings

- Engineering Technician
 - 2-year degree in civil engineering
- Highway Equipment Operator
 - Class "B" commercial driver's license
- Recycling Equipment Operator
 - Class "A" commercial driver's license
- Summer Help

Why I chose to work for the County and what I like most about it?





**Goodhue
County**
MINNESOTA

Land Use Management

Megan Smith
Land Use Management Director

Goodhue County Careers in the Land Use Management Department

Building

Permit Technician

Building Inspector

Building Official

Planning & Zoning

Zoning Technician

Zoning Assistant

Planner

Zoning Administrator

Environmental Health

Well Inspector

Septic Inspector

Sanitarian

Land Use, Zoning, and Planning Areas of Study

- Urban and Regional Planning
- Land Use Planning
- Housing
- Community Development
- Community Studies
- Environmental Science

Environmental Health Area of Study

- Water Treatment
- Solid Waste
- Air Quality
- Pest Management
- MPCA Septic Inspectors
- MDH Well Inspectors
- Sanitarian

Building Careers Areas of Study

- Education in the building trades: building inspection technology, building construction, architecture, building engineering
- Building Officials
- Building Inspector
- Experience + Examinations

Volunteer and Community Experience – Get involved in your community

Public Hearings!!!

- Soil and Water Conservation District
- Township Planning Commission and Township Board
- Planning Advisory Commission
- Board of Adjustment
- City Boards and Commissions
- Economic Development Authorities
- Chambers of Commerce
- MPCA – air, ground, and water pollution, stormwater regs, water quality
- DNR – conservation of lakes, streams, bluffs
- Mn Dept of Health – drinking water



SHERIFF

GOODHUE COUNTY

Nate Pepin & Dan Van Epps
Patrol Deputies

Patrol Division

Responsible for performing all patrol-related tasks:

- 33 Full-time deputies
- 3 Part-time deputies
- 1 K-9 patrol animal
- Divided into three areas:
 - Road Patrol
 - Four Seasons
 - Civil (Bailiff & Transport)



Patrol Division – ROAD PATROL

- 25 Deputies assigned full-time to Road Patrol
- Divided into 4 platoons to for 24-hour coverage
- Daily patrol in fully-marked Sheriff vehicles
- Answer calls for service
- Provides policing to cities of Pine Island, Wanamingo, Bellechester, and Dennison.



Patrol Division – FOUR SEASONS

- 2 Full-time and 3 part-time deputies
- Patrol waterways
- Patrol snowmobile and ATV trails
- General police operations



Patrol Division – CIVIL

- 5 Full-time deputies assigned to Civil duties
- Serve (deliver) legal documents such as complaints & subpoenas
- Provide courthouse & courtroom security (bailiff)
- Court-ordered transports and transport of incarcerated persons



Other training/roles for Patrol Deputies

- Emergency Response Team (ERT)
- Dive Team (underwater search & recovery)
- Drone pilot (FAA certificate) & LE operation
- K-9 Handler/trainer



Ways to get a “foot in the door”

- You do not have to be a MN licensed peace officer to work in the Sheriff’s Office
 - Detention Deputy:
 - 911 Dispatcher:
 - 18+
 - GED
 - On the job training, continuing training/education.





Working in Health and Human Services

Nina Arneson, M.S.

Goodhue County Health and Human Services (GCHHS) Director

Health and Human Services

- **Mission:** Promote, Strengthen, and Protect the Health of Individuals, Families and Communities.
- **Vision:** A safe and healthy Goodhue County, built on trusted service and strong community.
- **Core Values:**
 - Compassion
 - Collaboration
 - Prevention
 - Excellence
 - Tribal Sovereignty





HEALTH AND HUMAN SERVICES BOARD



HHS Director

HHS Administrative Aide

HHS Deputy Director

HHS Deputy Director

FINANCE & OFFICE SUPPORTS

SOCIAL SERVICES

Social Services- Adult

- Adult Mental Health Case Management
- Adult Protection
- Healthy Pathways
- Pre-Petition Screenings for Civil Commitment
- Substance Use

Social Services- Child & Family

- Adult & Child Foster Care Licensing
- Child Protection Assessment & Investigation
- Child Protection Case Management
- Family Child Care Licensing
- Parent Support Outreach Program (PSOP)
- Permanency and Adoption
- School Success

PUBLIC HEALTH

Healthy Communities

- Accreditation
- Chronic Disease and Injury Prevention
- Communications
- Community Health Assessment & Planning
- Community Partnership Development
- Data/Performance Management
- Emergency Preparedness & Response

Home and Community Based Services

- Health Plan Care Coordination
- MnCHOICES Assessments
- Waiver Case Management

Family Health

- Child & Teen Checkups
- Disease Prevention & Control (DP&C)
- Family Home Visiting
- Follow Along Program
- Refugee Health
- Women, Infants & Children (WIC)

ECONOMIC ASSISTANCE

Child Support

- Child Support Establishment & Enforcement

Income Maintenance

- Child Care Assistance
- Emergency Assistance
- Food and Nutrition
- Health Care
- Income Assistance

The People Behind the Work

- Social Workers
- Nurses
- Care Coordinators
- Child Support Officers
- Fiscal Officers
- Case Aides
- Office Support Specialists
- IT Support
- Eligibility Workers
- Health Educators & Planners
- Supervisors and Leads
- Accounting Technicians and more....



What is it like to work in Health & Human Services?

- Many different ways to serve Goodhue County residents and communities
- Fast paced, every day is different
- We see our community members often at their most vulnerable
- It can be tough, challenging and very rewarding public service careers
- Many ways to get started with HHS public service career
- ***What is the best thing about working at GCHHS?***





Thank You!

Additional HHS Resources:

- Realistic Job Preview of Child Protection Work in Minnesota: <https://cascw.umn.edu/professional-development/realistic-job-preview-child-protection-work-minnesota>
- Community Health Services Mailbag: <https://www.health.state.mn.us/communities/practice/connect/mailbag/index.html>
- GCHHS Facebook: www.facebook.com/gchhs
- National Public Health Accreditation: <https://www.health.state.mn.us/communities/practice/ta/accreditation.html>



**Goodhue
County**
MINNESOTA

Human Resources

Jessica Ahlbrecht, SHRM-CP
Human Resources Manager



WHAT IS HR?

Human Resources

- Recruitment & Selection
- Training & Development
- Performance Management
- Employee & Labor Relations
- Health, Safety & Wellbeing
- Compensation & Benefits
- Compliance with labor laws
- Workforce Planning
- and so much more...

STUDENT OPPORTUNITIES

SEASONAL JOBS & INTERNSHIPS

Up to 100 working days for students age 18-22 who are enrolled in post-secondary education for the following term. Interns earn college credit.

- Exposure to County careers
- Professional connections & real world experience
- Most positions work Monday - Friday
- Starting at \$17.50/ hour
- Make a difference in your community



Find your Good here.

APPLICATION TIPS



RESUME

Revise your resume to highlight skills related to the job you're applying for.



BE EXTRA

A cover letter, references, work samples, specialized training information can set you apart. But don't overdo it.



JOB DESCRIPTION

The job description will give you valuable insights as to what could make **YOU** stand out as a candidate.



VETERANS PREFERENCE

Qualified veterans receive preference points in the hiring process.



EVALUATION

Applications are scored against job related criteria in compliance with Veterans Preference regulations.

Questions?