



Goodhue County
Health and Human Services

426 West Avenue
(651) 385-3200 • Fax (651) 267-4882

April 11, 2024

TO: Health and Human Services Board

FROM: Nina Arneson, Director
Kris Johnson, Deputy Director

RE: Update on C.A.R.E. Clinic Collaboration

I am writing to provide an update on the shared nursing position at the C.A.R.E. Clinic. This position was created in 2022 in response to an urgent need to fill the Disease Prevention and Control Nurse position at HHS. The position had been posted three times, and it had sat open a year without finding a suitable applicant. This was during the COVID-19 pandemic when HHS and the Goodhue County C.A.R.E. Clinic had been regularly collaborating to provide COVID vaccinations and other care. HHS and the C.A.R.E. began conversation about how to share a nursing position that could address the need at HHS, which would also create additional support for the C.A.R.E. Clinic.

With extensive consultation with the Goodhue County Attorney's office, MCIT, various county Public Health partners in the SE Region, and the Boards of both the C.A.R.E. Clinic and HHS, a Memorandum of Agreement was created and approved which designated a nursing position that would be shared between HHS and the C.A.R.E. Clinic.

The nurse in this position spent roughly half of her time at the C.A.R.E. Clinic and the other half of her time coordinating the Disease Prevention and Control program for HHS. Two other HHS staff also carried parts of the DPC position.

One major positive result of this collaboration is that it strengthened the partnership between our two agencies, and enhanced our capacity to collaborate in all areas of HHS.

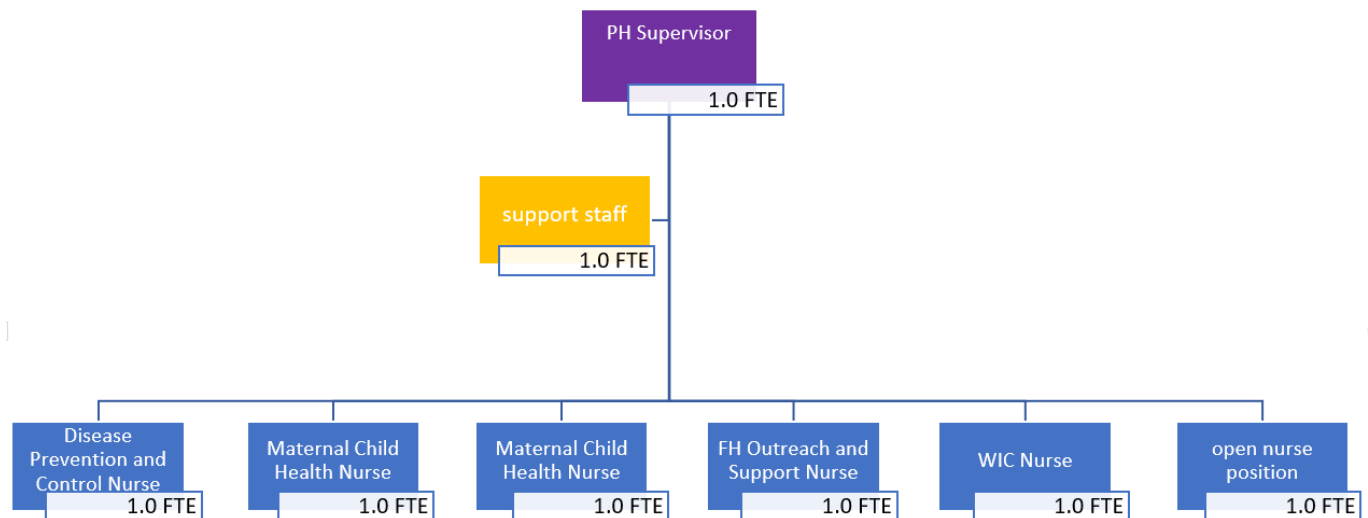
The position also had its challenges. The nursing shortage throughout the state and county is certainly felt by both of our agencies, so that turnover at the C.A.R.E. Clinic resulted in the nurse in the shared position needing to spend more hours at the clinic. While the pandemic was winding down, there were ongoing needs in DPC that were challenging to meet. There was an increase in family home visiting referrals and waiver referrals that pulled on the other nursing staffs' time. In March, 2023, the nurse in the shared position applied for a different position in Family Health. There were additional changes in the unit at that time, including a retirement and a resignation

Promote, Strengthen and Protect the Health
of Individuals, Families and Communities!

Equal Opportunity Employer
www.co.goodhue.mn.us/HHS



(due to the staff moving out of state), and the Family Health supervisor elected to leave the supervisor position and take a staff position. These changes provided the opportunity to restructure the Family Health unit. In the new structure, the DPC position moved to full time, and the shared position with the C.A.R.E. Clinic was half time at the clinic, and half time at HHS providing Family Home Visiting. Family Home Visiting referrals were also shifted to two Public Health Nurses, while a third PHN coordinated several other programs. The current organizational chart of Family Health is seen below:



In June, 2023 a new supervisor was hired, and in October, 2023 new nurse was hired for the shared position. The duties changed at the C.A.R.E. Clinic, so that it was a less clinical position and more involved in community collaboration. For a variety of reasons, the nurse in the shared position ultimately left the position after approximately three months.

This turnover has led to further examination of this position, and the decision was made that with the increased workload at HHS, the full-time position is needed in the agency. This decision was not made lightly, as there were many benefits to the shared position, especially because nurses are so in-demand. We consider this a “pause” on the shared position, with the hope that there will be a time when it is more feasible to consider a shared position.

We also intend to take the next few weeks to meet with the Family Health team to re-examine the work duties in the Family Health Department, with additional consideration as to how to fill the new position.

It is also important to affirm our partnership with the C.A.R.E. Clinic, which serves an important foundational public health responsibility of providing access to care, particularly to populations that traditionally have difficulty obtaining basic health care. By providing access to basic health care, further costly and devastating health complications are less likely to occur, which ultimately reduces health care costs for the entire county and improves quality of life.

The Minnesota State Legislature has allocated two new funding streams to strengthen the Public Health System in Minnesota, which are noted in more detail in the current personnel request. GCHHS has earmarked regular funding for the C.A.R.E. Clinic within that budget to provide support for the outreach and basic health care provided at the clinic.

We are grateful to have had the support to try an “out of the box” idea to fill a position that had sat open for a year. We expect that difficult hiring climate will continue, especially for nurses as the aging population continues to require a higher level of care. And we are hopeful about the opportunities ahead in Public Health with the move toward foundational Public Health reform.



Community • Access • Resources • Education

- [HOME](#)
- [ABOUT](#)
- [MNSURE](#)
- [MENTAL HEALTH/THERAPY](#)
- [MEDICAL](#)
- [DENTAL](#)
- [VOLUNTEER](#)

Mission

C.A.R.E. Clinic is a nonprofit clinic caring for underserved low-income residents of Goodhue County and Lake City Minnesota.*

Our mission is to contribute to the **C**ommunity by improving health care, **A**ccess, connecting people to **R**esources, and promoting health **E**ducation.

*MNsurre enrollment assistance is open to the entire community, regardless of income or residency.



Services

- Dental Care
- Medical Care
- Mental Health Care
- Hispanic Family Therapy
- Optical Care
- Connections to Resources
- Prescription Assistance
- MNsure Enrollment Assistance

Hours

Affordable Dental Clinic

Monday – Thursday 8AM to 4PM, call for Friday and Saturday availability

Free Medical & Mental Health Clinic

- Open every Tuesday evening
- Registration from 4 – 6:30PM
- Operates first come, first served
- Free Flu vaccines for ages 6 mos. and older

Eligibility

Insurance Status

- Medical/Mental Health: Uninsured
- Dental Services: Uninsured or MHCP (MA and MinnesotaCare)
- Income: Up to 275% of the federal poverty level ([Click here to view Income Guidelines](#))
- Live in Goodhue County or Lake City

Resource Coordination

At each visit, patients meet with a resource coordinator who will connect you with local, state, and federal resources related to:

- Food
- Housing
- Employment
- Public Benefits
- Free Legal Aid

The links below are lists of resources available in Goodhue County:

[Goodhue County Resource List \(English\)](#)

Recursos En Espanol

Transportation

Within Red Wing – Hiawathaland Transit: For patients who reside within Red Wing, Hiawathaland Transit has Dial-A-Ride available. CARE Clinic is located on the Hiawathaland Transit Green Route and is serviced by the **7th and West stop**. The route no longer accepts deviations. The available options depend on your pick up location. For specific ride information, please contact their dispatch center at 866-623-7505, option 1. Rides may be scheduled up to 6 days in advance.

Fees: Route Rides are \$1.25 each way, and Dial-a-Ride transport is \$1.75 each way. **Ride tokens are available at CARE Clinic.**

Outside of Red Wing – HART Volunteer Transportation: Please call 866-623-7505, option 2, to find out if this service can help with your transportation needs.

For additional information about the bus service, visit the **[Three Rivers Community Action Hiawathaland Transit](#)** page.

If you have **Medical Assistance (South Country Health Alliance)**, you may be provided a ride or reimbursed for transportation costs to and from dental appointments. Members should call Member Services at [1-866-567-7242](tel:1-866-567-7242) at least 3 days in advance to arrange transportation.

[CARE Clinic \(careclinicrw.com\)](http://careclinicrw.com)

**FIND YOUR DENTAL HOME
AT CARE CLINIC!**

**Call: 651-388-1022
for an appointment today!**



**ENCUENTRA TU CUIDADO
DENTAL EN CARE CLINIC!**

**Llama al: 651-388-1022
para agendar una cita hoy!**

CARE Clinic

**Tiene tratamiento
dental para niños!**



**We provide the following
services for kids:**

- Cleanings
- Fillings
- X-Rays
- Oral Health Education
- Fluoride
- Sealants
- Referrals

Your child might qualify for Medical Assistance, a public health care program that has NO monthly premium. Medical Assistance could provide coverage in addition to or instead of your child's family coverage through an employer.

We accept uninsured patients and Minnesota Health Care Program enrollees (Medical Assistance and Minnesota Care, including South Country Health Alliance). Free dental care for uninsured children! No out of pocket expense for insured children.

**Estos son los servicios dentales para
niños que ofrecemos:**

- Limpiezas
- Rellenos
- Radiografías dentales
- Educación en higiene bucal
- Aplicación de floruro
- Sellantes
- Referencias a especialistas

Tu hijo tal vez califique para "Medical Assistance", un programa público de seguro que NO tiene pagos al mes. Medical Assistance podría proveerle cobertura en lugar de obtenerla a través de tu empleador.

Acceptamos pacientes que no cuenten con seguro y pacientes que estén en Medical Assistance y MinnesotaCare, incluyendo South Country Health Alliance. Tratamiento dental gratis para niños que no cuenten con seguro dental! Tampoco hay costo alguno por niños que sí cuentan con seguro.

**Get your child's health
insurance reimbursed!**

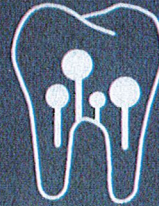


Family Size

**Gross
Monthly
Income
Less than**



**Obtén tu reembolso del
seguro de tus hijos!**



**Tamaño
Familiar**

**Ingreso
Mensual**



www.careclinicrw.com

**info@careclinicrw.com
Address: 906 College Ave.
Red Wing MN 55066**



Official Partner

www.careclinicrw.com

**info@careclinicrw.com
Dirección: 906 College Ave.
Red Wing MN 55066**



Official Partner