



**Jess L. Greenwood, P.E.**  
*Public Works Director – County Engineer*

2140 Pioneer Road  
Red Wing, MN 55066  
Office: (651) 385.3025

TO: Honorable County Commissioners  
Scott Arneson, County Administrator

FROM: Jess L. Greenwood, Public Works Director | County Engineer

RE: 21 May 2024 County Board Meeting – CONSENT AGENDA  
**Goodhue County Support for the US 52 Planning & Environmental Linkages Study Recommendations**

Date: 16 May 2024

#### Summary

Mn/DOT, in conjunction with SRF, have been working on a Planning & Environmental Linkages (PEL) Study and seeks support of the findings, from the County, as the study is nearing its completion. Goodhue County, through agreement, has been a financial contributor for the PEL study.

#### Background

The primary focus of the study centers on the intersection and surrounding area of US 52 & CSAH 7. CSAH 7 is the remaining at-grade-intersection that Goodhue County has along US 52. The study further addresses several local roads and their connection to US 52. Additionally, the study recommends corridor-wide improvements that include adding rumble strips and widened shoulders.

This PEL study, which is being done along an eight-mile corridor on US 52 from Hader to Zumbrota, began in March of 2022 and will finish in June of 2024. The study examined eight different concepts as well as a local roads concept. Through the course of several public meetings and Project Management Team (PMT) meetings, concepts 4, 5, 7, and the Local Roads Concept were determined to best meet the purpose and need of the study. At a previous Committee of the Whole presentation, discussing the PEL study, these concepts were discussed and are being included as an attachment to this report for reference. These concepts are recommended to be carried forward into a future environmental process.

With a 3–5-year shelf life there will be a focus to secure funding to advance potential projects into a National Environmental Policy Act (NEPA) phase. This process will help to identify one preferred alternative which will be analyzed much more closely.

#### Alternatives

- Support Mn/DOT's PEL study recommendations and approve the attached resolution.
- Do nothing.

#### Recommendations

- Staff recommends that the County Board support Mn/DOT's PEL study recommendations and approve the attached resolution.

**"To effectively promote the safety, health, and well-being of our residents"**

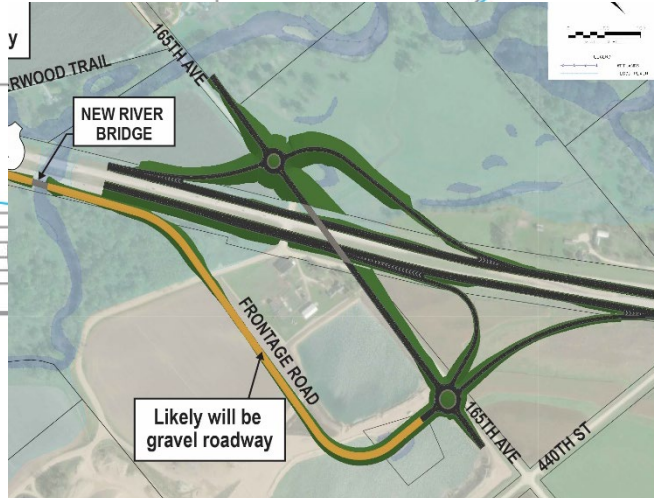
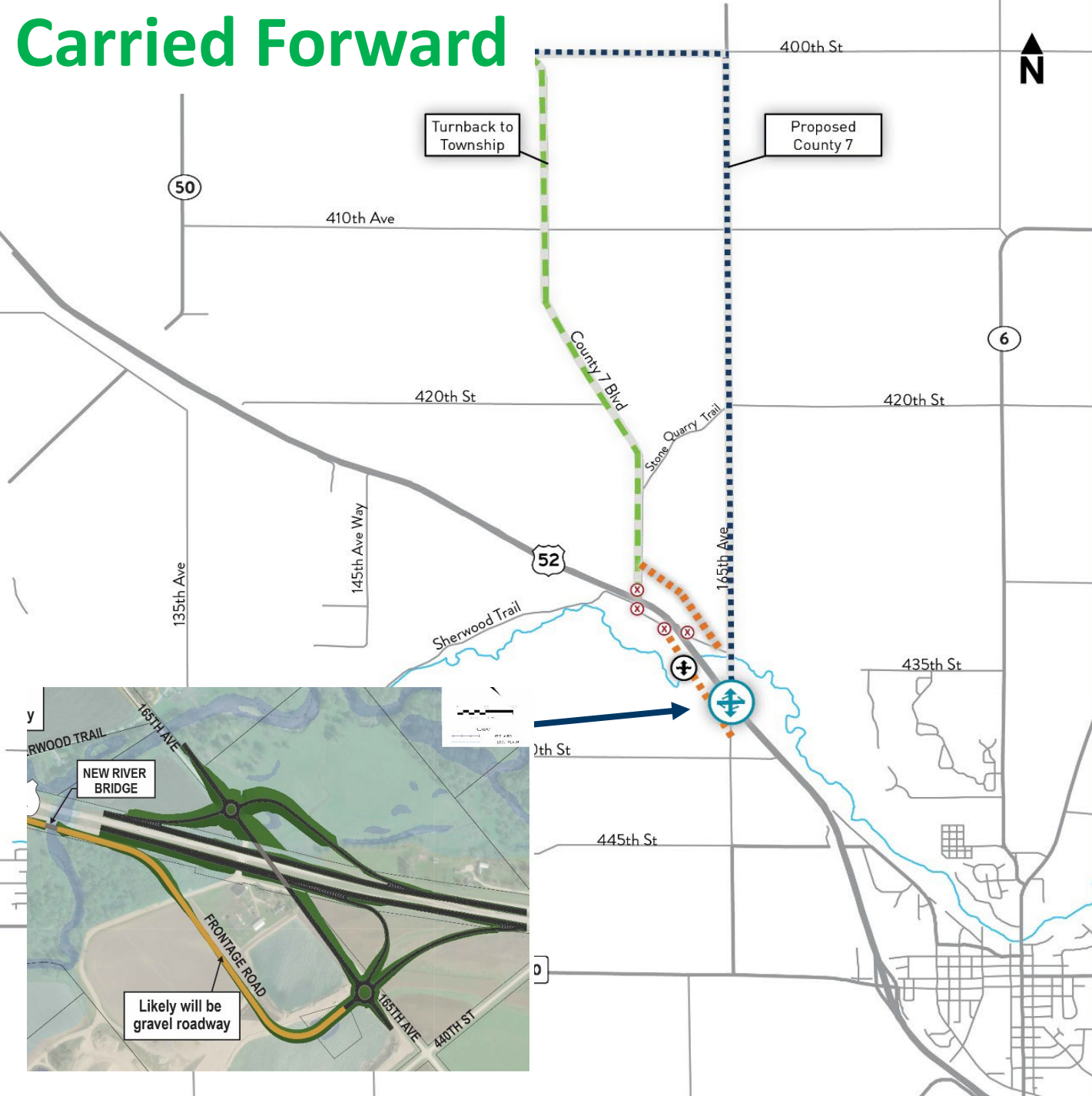
# Carried Forward

## US 52 PEL Study Zumbrota to Hader

### Concept 4

Legend

-  River Bridge
-  Interchange, Primary Intersection
-  Access Closure
-  Future Frontage Road
-  Future County Road
-  Future Township Road



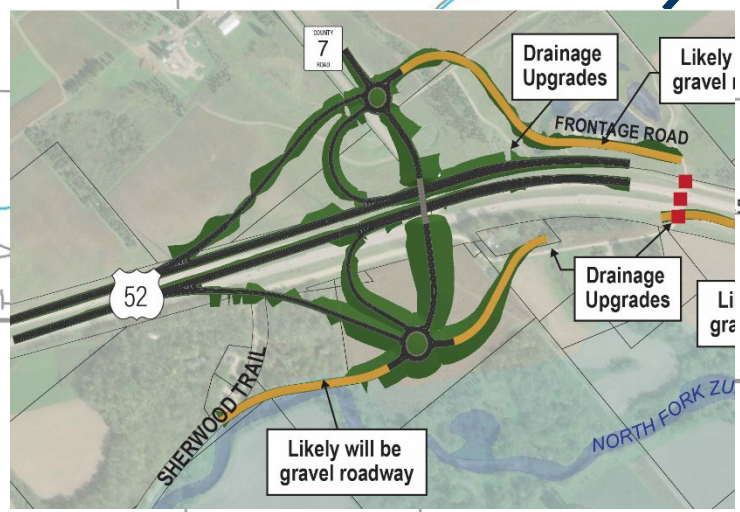
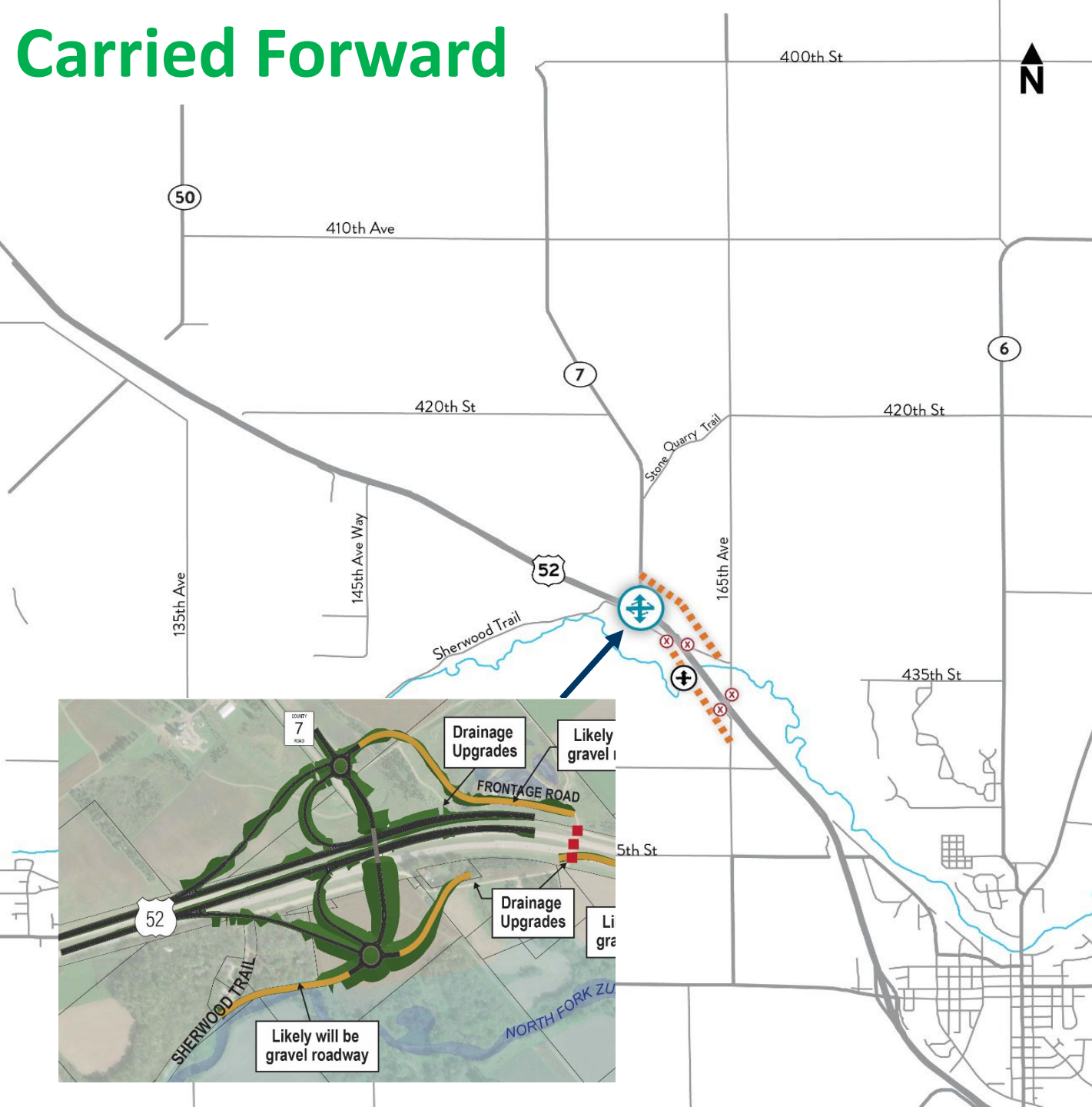
# Carried Forward

## US 52 PEL Study Zumbrota to Hader

### Concept 5

#### Legend

-  River Bridge
-  Interchange, Primary Intersection
-  Access Closure
-  Future Frontage Road



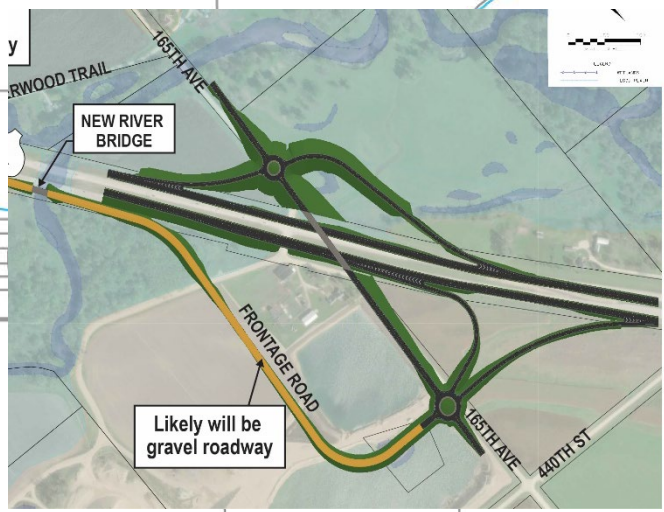
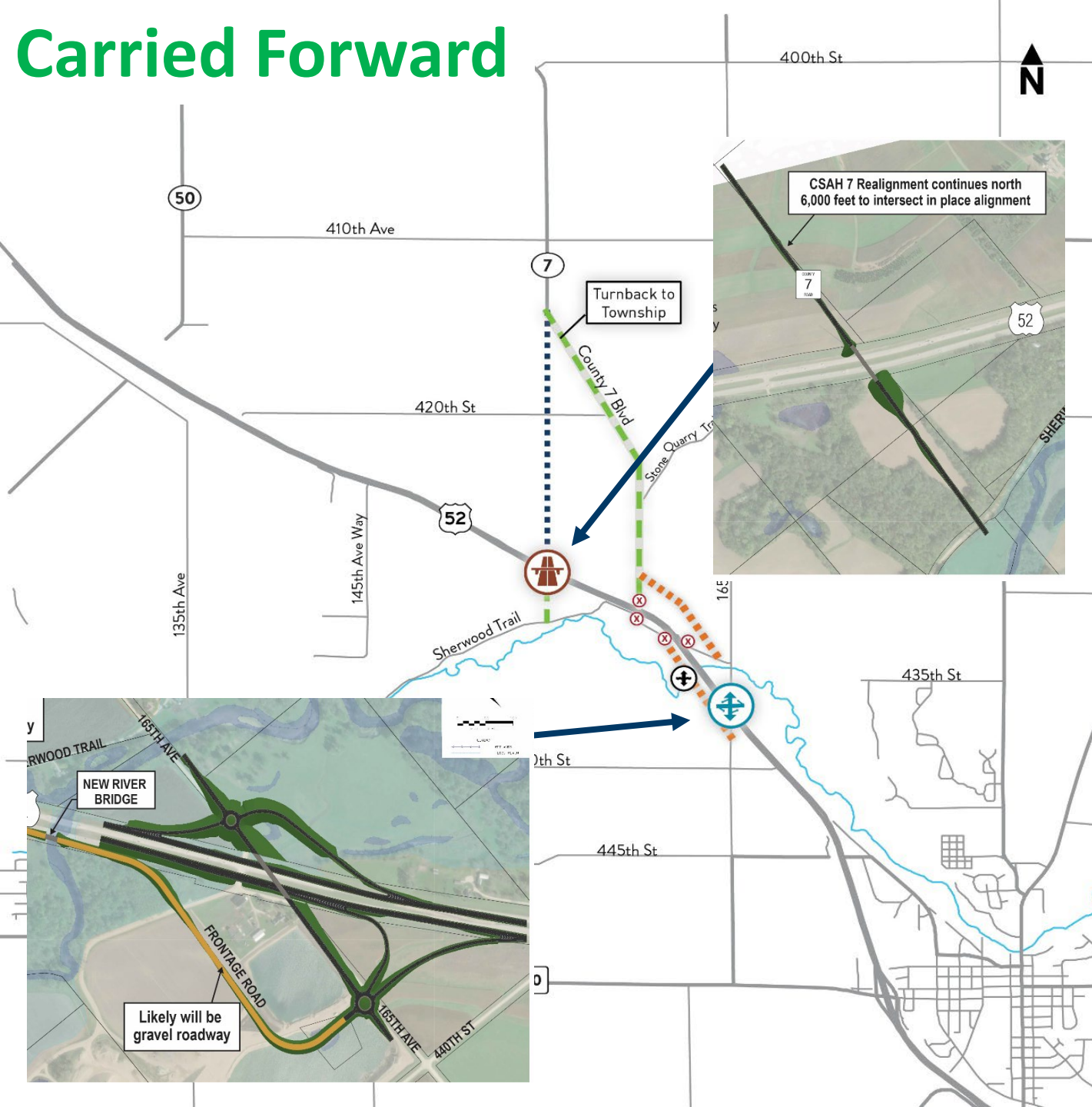
# Carried Forward

US 52 PEL Study  
Zumbrota to Hader

## Concept 7

### Legend

-  River Bridge
-  Interchange, Primary Intersection
-  Overpass, Secondary Intersection
-  Access Closure
-  Future Frontage Road
-  Future County Road
-  Future Township Road



# Carried Forward

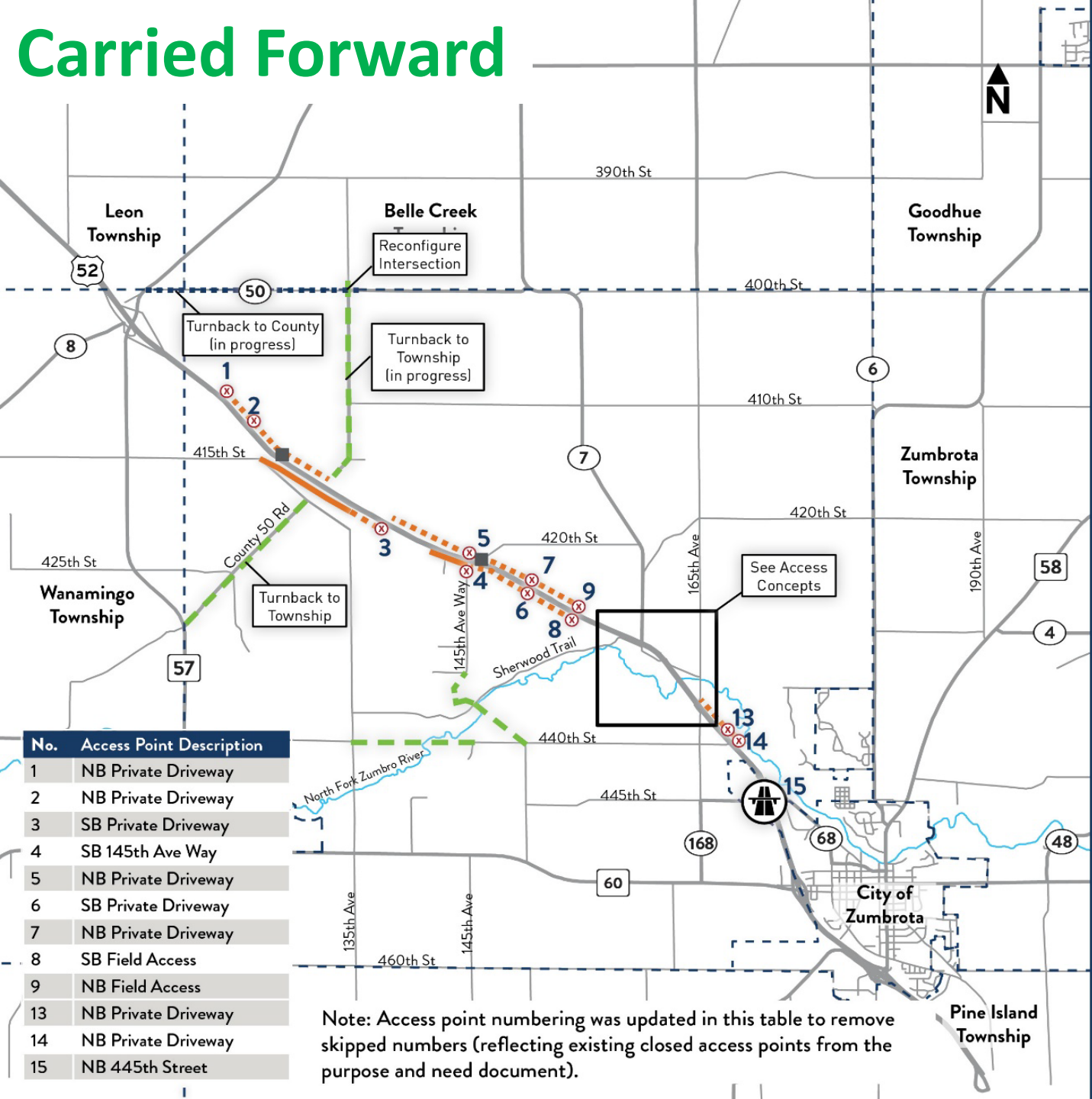
## Local Roads Concept

Legend

- Municipalities
- Median U-Turn
- Overpass
- Access Closure
- Future County Road
- Future Township Road
- Future Frontage Road
- Existing Frontage Road

No.	Access Point Description
1	NB Private Driveway
2	NB Private Driveway
3	SB Private Driveway
4	SB 145th Ave Way
5	NB Private Driveway
6	SB Private Driveway
7	NB Private Driveway
8	SB Field Access
9	NB Field Access
13	NB Private Driveway
14	NB Private Driveway
15	NB 445th Street

Note: Access point numbering was updated in this table to remove skipped numbers (reflecting existing closed access points from the purpose and need document).



**BOARD OF COUNTY COMMISSIONERS  
GOODHUE COUNTY, MINNESOTA**

21 May 2024

---

**A RESOLUTION APPROVING SUPPORT FOR THE US 52 PLANNING AND ENVIRONMENTAL LINKAGES STUDY RECOMENDATIONS**

**WHEREAS**, the US Highway (US) 52 Planning and Environmental Linkages (PEL) Study evaluated transportation problems and environmental concerns along an eight mile corridor on US 52 from Hader to Zumbrota in Goodhue County, Minnesota (Corridor);

**WHEREAS**, the PEL Study was guided by a Project Management Team, which included representatives from Goodhue County, which met regularly throughout the study process;

**WHEREAS**, Concept 4, Concept 5, Concept 7, and the Local Roads Concept were determined to best meet the purpose and need of the study and are recommended to be carried forward into a future environmental process;

**WHEREAS**, Corridor-wide improvements of adding rumble strips and widened shoulders along US 52 in the PEL Study area are recommended to be implemented at specific locations which will be identified in the future;

**THEREFORE, BE IT RESOLVED BY THE GOODHUE COUNTY BOARD:** that Goodhue County supports the above recommendations of the US 52 PEL Study (SP 2506-86) and acknowledges the importance of continued partnership in future project development within the PEL Study area.

---

State of Minnesota  
County of Goodhue

Flanders	Yes	___	No	___
Anderson	Yes	___	No	___
Betcher	Yes	___	No	___
Majerus	Yes	___	No	___
Greseth	Yes	___	No	___

I, Scott Arneson, duly appointed, qualified and County Administrator of the County of Goodhue, State of Minnesota, do hereby certify that I have compared the foregoing copy of a resolution with the original minutes of the proceedings of the Board of County Commissioners, Goodhue County, Minnesota at their session held on the 21<sup>st</sup> day of May 2024, now on file in my office, and have found the same to be a true and correct copy thereof.

Witness my hand and official seal at Red Wing, Minnesota this 21<sup>st</sup> day of May 2024.

---

Scott Arneson  
County Administrator