



**PowerOn  
Midwest™**



# Goodhue County

May 2026

# Utility team

Great River Energy | ITC Midwest | Xcel Energy



# Project overview



# PowerOn Midwest

Electricity use is growing throughout the Upper Midwest and **demand is expected to increase significantly** over the next two decades.

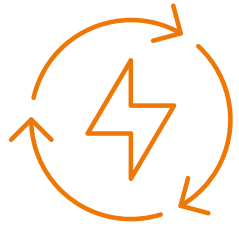
This increase in electric use, combined with the changing ways electricity is generated, requires new long-term solutions to meet the needs of our communities, states, and region to ensure we can continue delivering the reliable service you need to power your daily lives.

## PowerOn Midwest—tomorrow's reliability starts today.

---



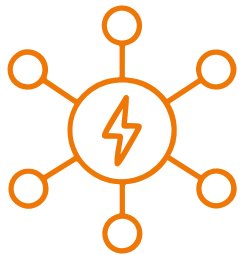
# Project benefits



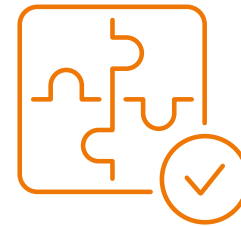
**Continued  
electric reliability**



**Customer and  
economic benefits**

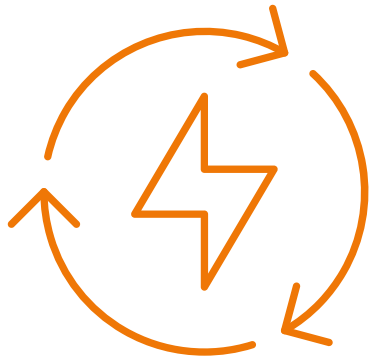


**Prepares the grid  
for future growth**



**Access to new  
generation**

# Project benefits



## Continued electric reliability

***We know our customers and cooperative members expect:***

- Consistent power delivery in any season, under any conditions.
- Access to cost-effective generation such as wind and solar.
- A grid that enables new technologies and supports technologies that reduce emissions.

# Project benefits



## Customer and economic benefits

- Enabling cost-efficient generation and improving reliability compared to other more expensive solutions.
- Between \$7 billion and \$25 billion in economic benefits.
- PowerOn Midwest will help our local communities and region can continue to grow.

# Economic Impact Report

Contracted with Strategic Economic Research, LLC to conduct a standardized economic impact analysis, including:



## **Economic activity**

generated in local and state economies



## **Tax revenues**

at the county and state level



## **Jobs created**

(direct, indirect, and induced)

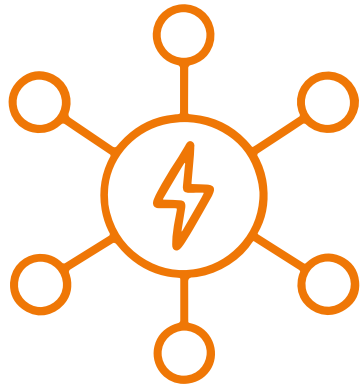


## **Labor income**

(payroll)

- Report to be finalized and published soon.
- Findings will be announced through a statewide press release and earned media.
- **PowerOnMidwest.com** will host the full report, executive summary, FAQs, and fact sheet — please share.

# Project benefits



## Prepares the grid for future growth

Electricity demand is expected to grow significantly over the coming decades.

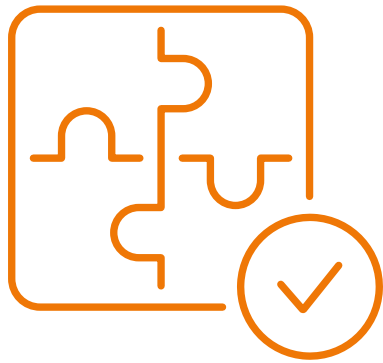
***This growth is driven by:***

- New and expanded manufacturing.
- Expanded electrification of our homes and businesses.

The current transmission system cannot handle this level of growth without significant upgrades.

PowerOn Midwest is the answer, a 765 kV backbone able to carry more power from where it's generated to where it's needed.

# Project benefits



## Access to new generation

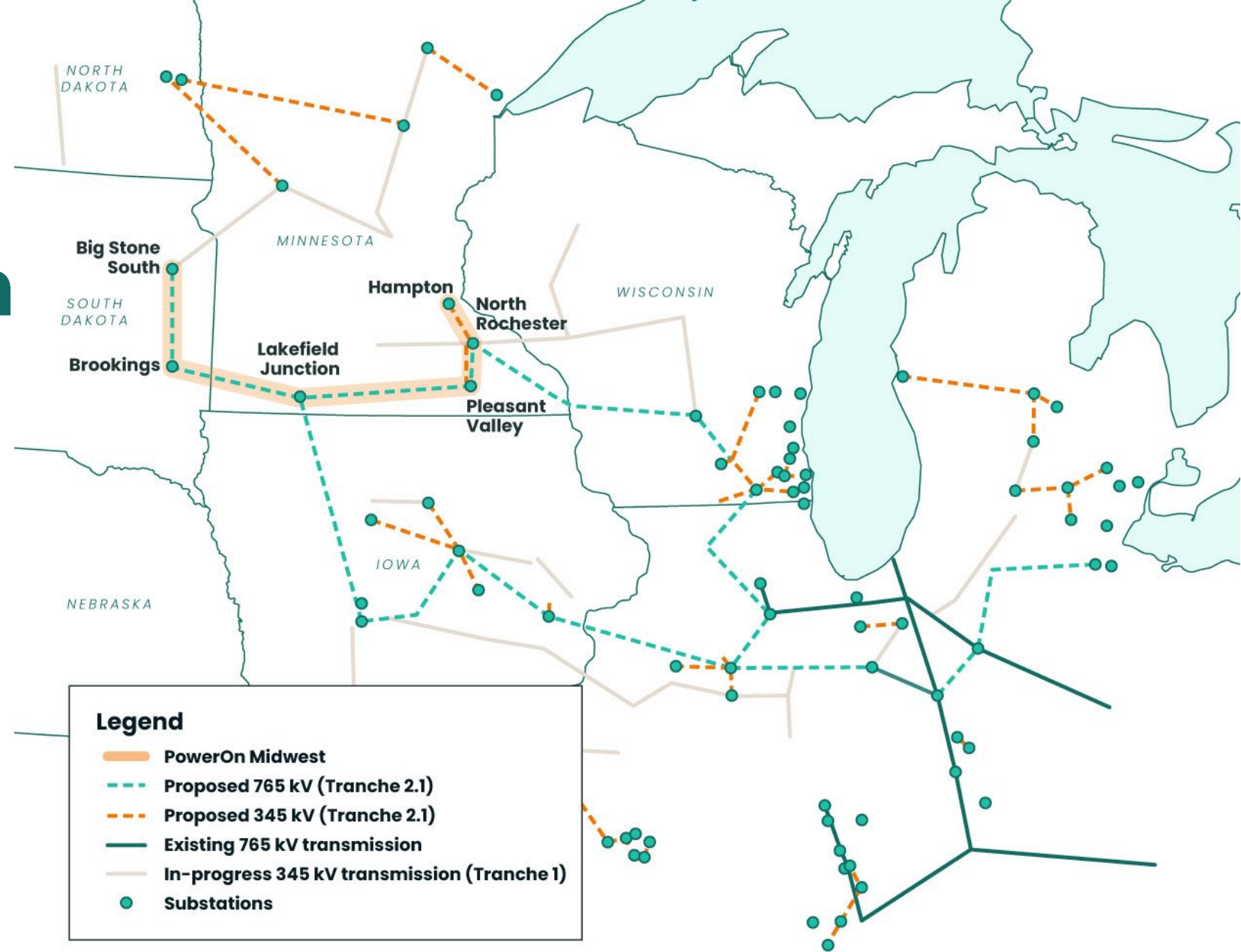
The way we generate power is changing.

Over the past two decades, many coal plants have been retired across the Upper Midwest and this is expected to continue.

***Much of this energy generation will be replaced with:***

- Geographically dispersed renewable energy
- New, always-ready natural gas plants
- Other emerging technologies

# MISO Long-Range Transmission Plan Tranche 2.1



Proposed lines for illustrative purposes – routes have not been determined

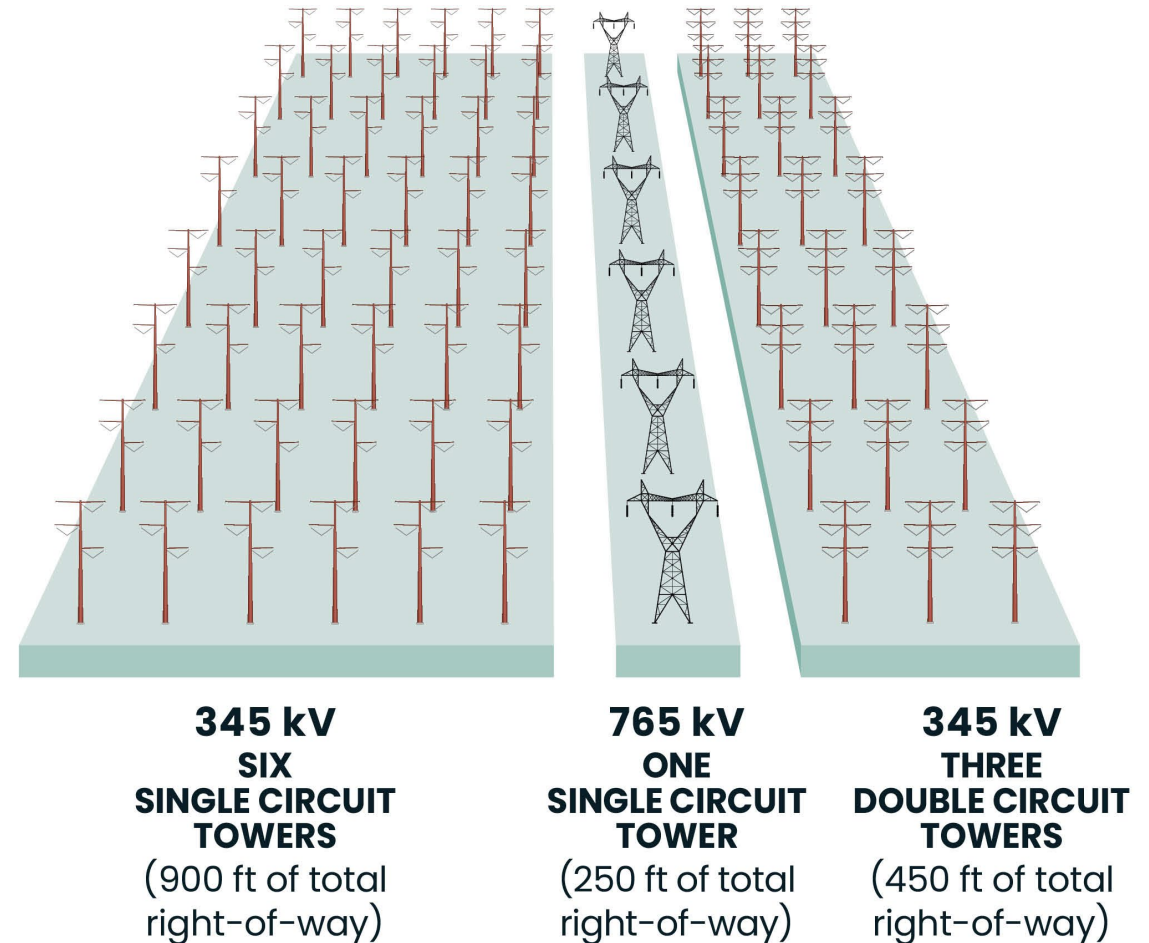
# Technology

**765 kV** was identified as the preferred solution for PowerOn Midwest, presenting several advantages:

- Efficiently carries power over long distances
- Fewer transmission lines needed to carry the same amount of power
- Fewer structures per mile reduces impact on communities and environment
- Resilient infrastructure that can consistently deliver power
- Provides backup power pathways

A 765 kV transmission line can carry as much power as:

- **Six single circuit 345 kV lines\***
- **Or three double circuit 345 kV lines\***

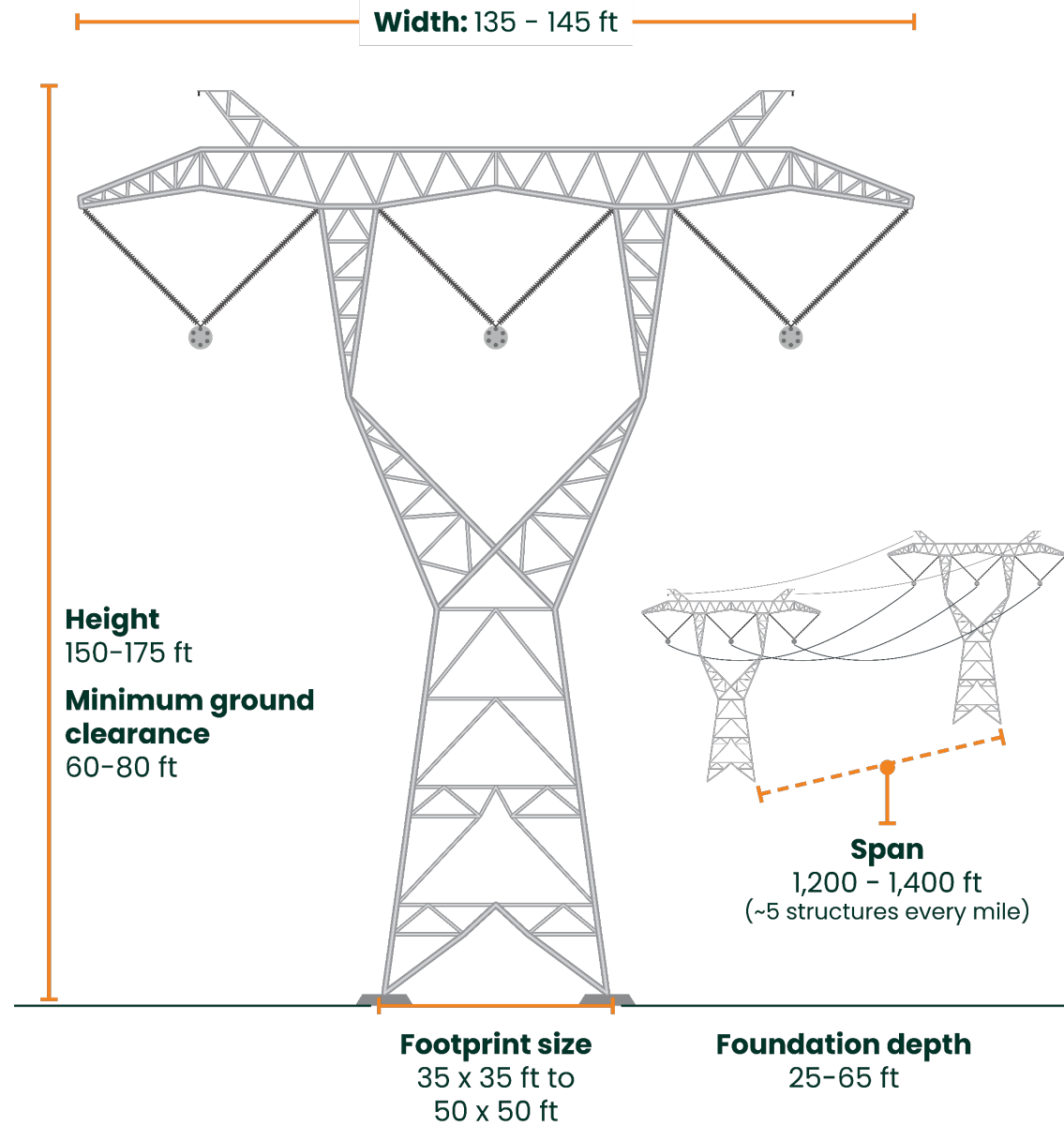


\*Data source: MISO



# 765 kV Structure

- Typical structure shown



**Right-of-way width:** 250 ft (125 ft each side from the centerline)

# PowerOn Midwest permitting

Requires two approvals from the Minnesota Public Utilities Commission – Certificate of Need and Route Permits

## Certificate of Need

(typically a 12-15-month process)

## Route Permits

(typically a 12-15-month process for each permit)

*The South Dakota segment will require a South Dakota Facility Permit and county-level permits; typically a 12-18 month process.*



# Certificate of Need update

- PowerOn Midwest filed for a Certificate of Need on February 3, 2026
- 11 public information meetings April 21-23 & 28-30
- Upcoming Public Hearings Q4 2026

## Certificate of Need

*(typically a 12-15-month process)*

---

# Route development and permit activities

- Route development is underway with open houses coming up in June 2026 and Fall 2026
- We anticipate filing route permit applications in the first quarter of 2027
- We expect a PUC decision on a final Route mid-late 2028

## Route permits

*(typically a 12-15-month process for each permit)*

# Project timeline

- **2025**  
Project planning, initial stakeholder and public engagement
- **2026–2027**  
File PowerOn Midwest Certificate of Need application with the MPUC, Certificate of Need MPUC review process, route development, file Route Permit applications with MPUC
- **2027–2029**  
Route Permit MPUC review processes, engineering design, environmental surveys and permitting, easement acquisition
- **2030–2034**  
Ongoing easement acquisition, pre-construction activities, construction, restoration
- **2032–2034**  
Anticipated in-service (individual segment in-service dates will vary)

## SHORT-TERM SCHEDULE

- 1 **February** – CON filing
- 2 **April 2026** – CON scoping meetings
- 3 **June 2026** – Routing open houses, round 1
- 4 **Fall 2026** – Routing open houses, round 2
- 5 **Q4 2026** – MPUC public hearings
- 6 **February 2027** – Route permit application submittal

# Route development



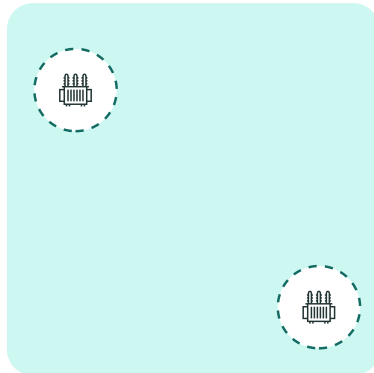
# Route development

- Routing open houses in June 2026

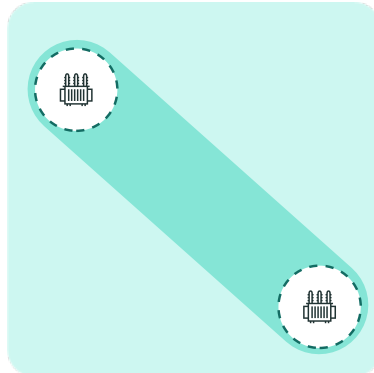


Opportunity for communities, stakeholders, and landowners to view route maps, provide feedback, and ask questions of utility staff

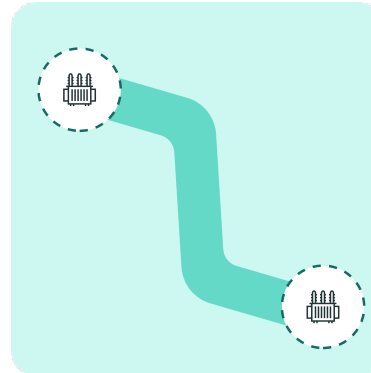
**Define study area**



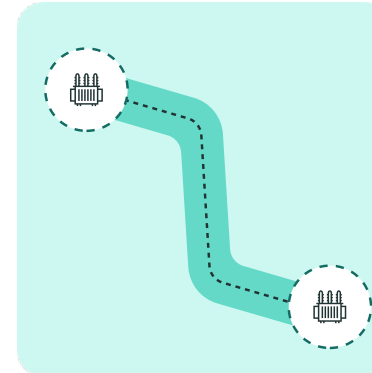
**Identify route corridors**



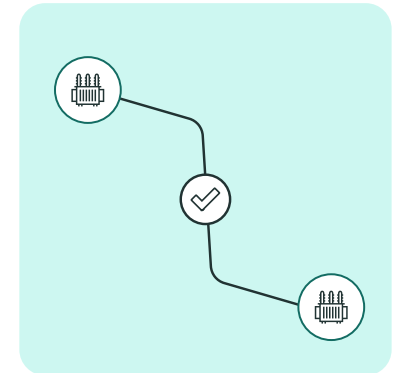
**Refine to preliminary routes**



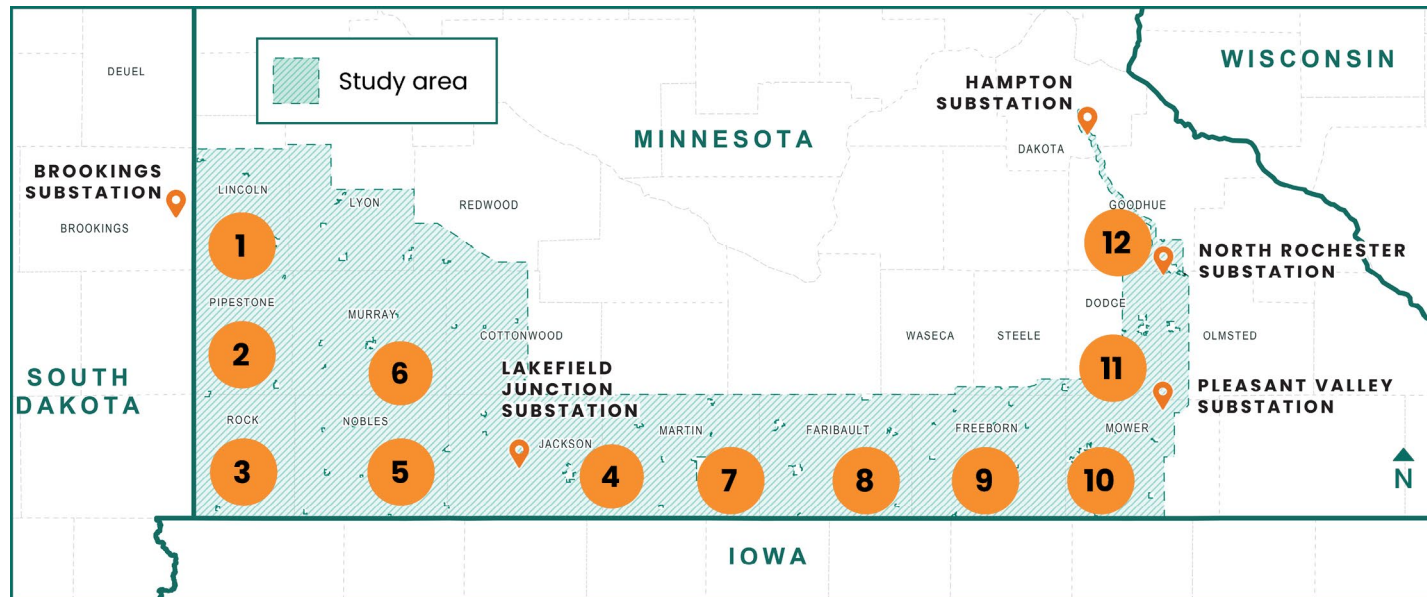
**Identify proposed route**



**MPUC determines final route**



# Upcoming routing open house schedule – week 1



## 1. June 2, 2026 | 10 a.m. – 12 p.m.

Lake Benton Community Center  
114 Center St S, Lake Benton, MN 56149

## 2. June 2, 2026 | 4 p.m. – 6 p.m.

St. Leo Catholic Church  
415 S Hiawatha Ave, Pipestone, MN 56164

## 3. June 3, 2026 | 10 a.m. – 12 p.m.

Luverne Generations Events  
105 S Estey St, Luverne, MN 56156

## 4. June 3, 2026 | 4 p.m. – 6 p.m.

Fox Lake Event Center  
730 125th St, Sherburn, MN 56171

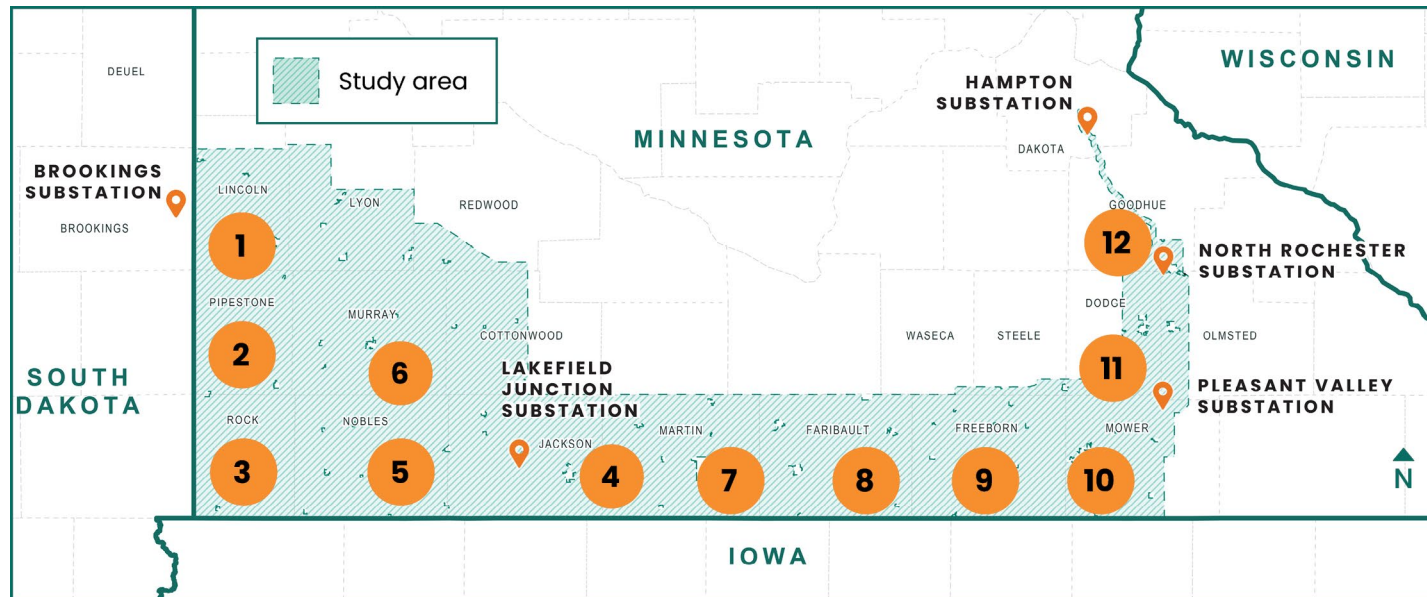
## 5. June 4, 2026 | 10 a.m. – 12 p.m.

Worthington Event Center  
1447 Prairie Dr, Worthington, MN 56187

## 6. June 4, 2026 | 4 p.m. – 6 p.m.

Fulda American Legion  
106 W Front St, Fulda MN 56131

# Upcoming routing open house schedule – week 2



**7. June 9, 2026 | 10 a.m. – 12 p.m.**

*Knights of Columbus*

920 E 10th St, Fairmont, MN 56031

**8. June 9, 2026 | 4 p.m. – 6 p.m.**

*Golden Bubble*

11575 State Highway 22, Wells, MN 56097

**9. June 10, 2026 | 10 a.m. – 12 p.m.**

*Wedgewood Cove Golf Club*

2200 W 9th St, Albert Lea, MN 56007

**10. June 10, 2026 | 4 p.m. – 6 p.m.**

*Doubletree*

1701 4th St NW, Austin, MN 55912

**11. June 11, 2026**

**10 a.m. – 12 p.m. | 4 p.m. – 6 p.m.**

*Events By Saker*

401 8th St SE, Kasson, MN 55944

**12. June 12, 2026 | 10 a.m. – 12 p.m.**

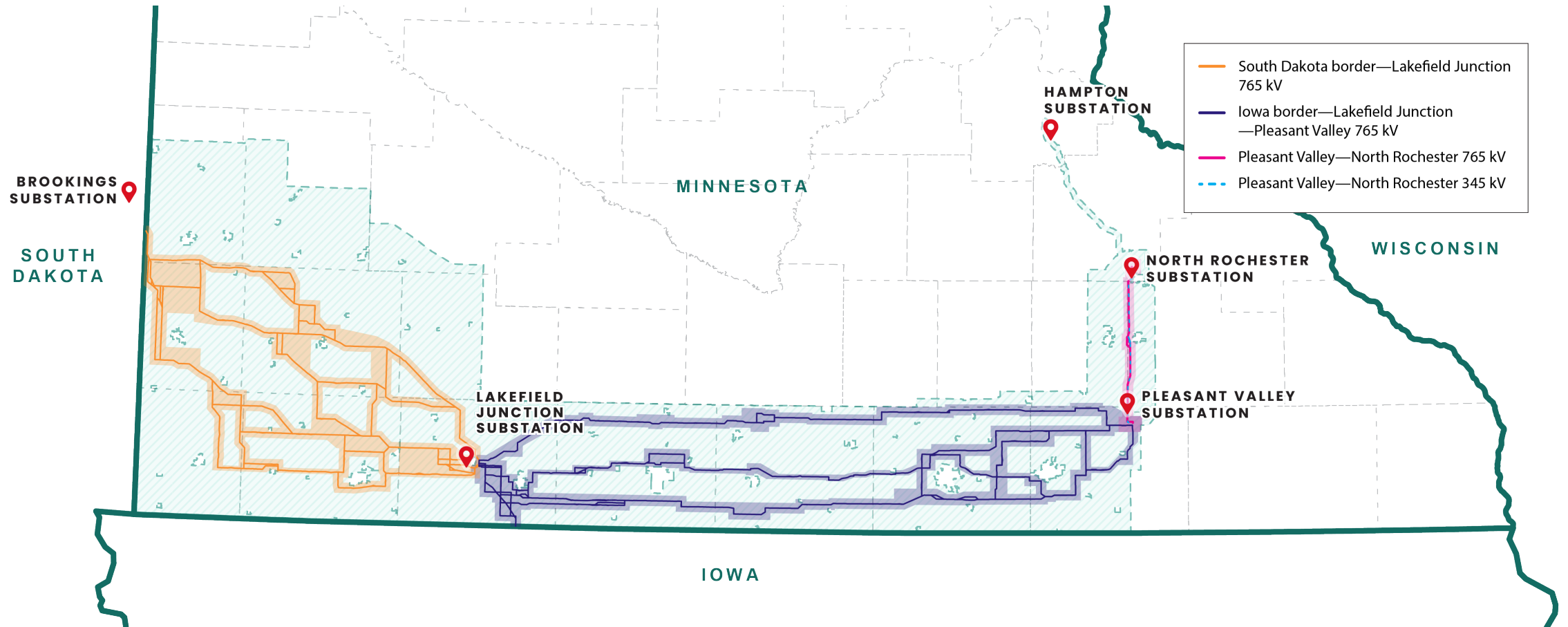
*Zumbrota VFW*

21 E 1st St, Zumbrota, MN 55992

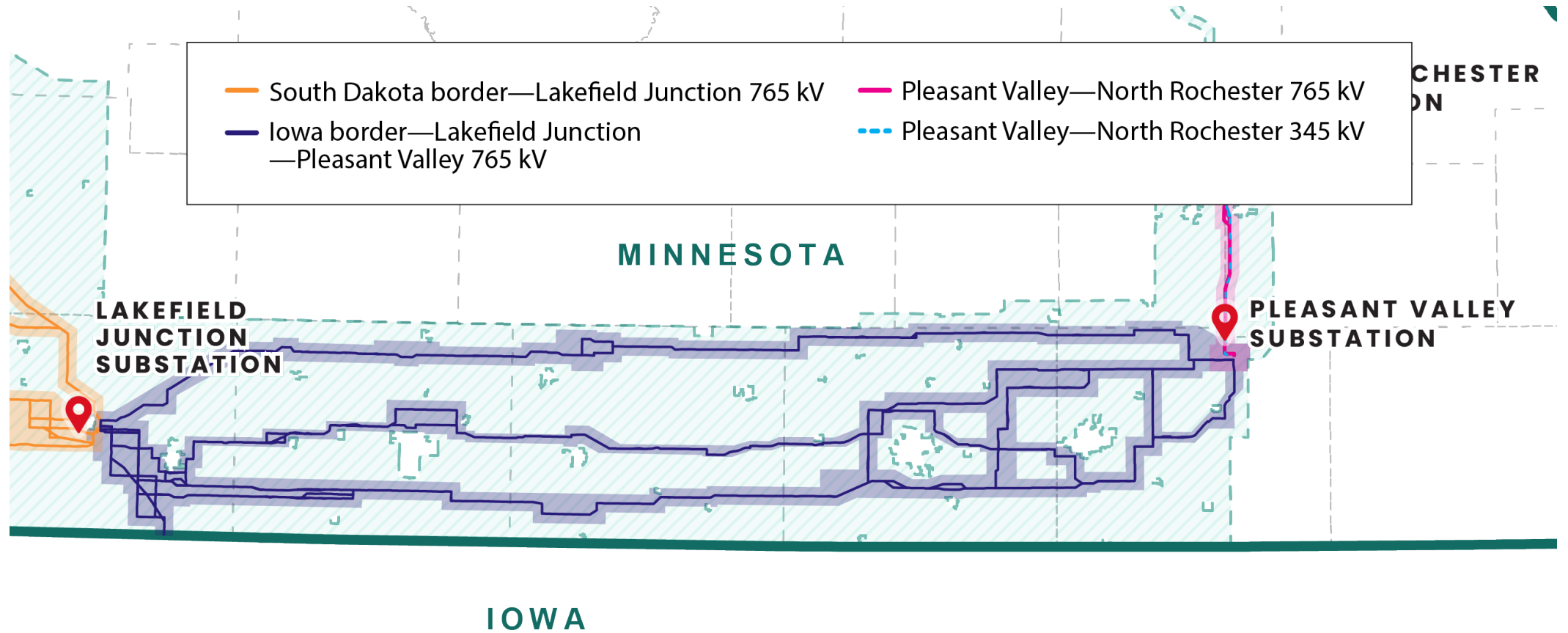
# Route corridors



# Overview map






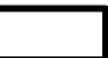




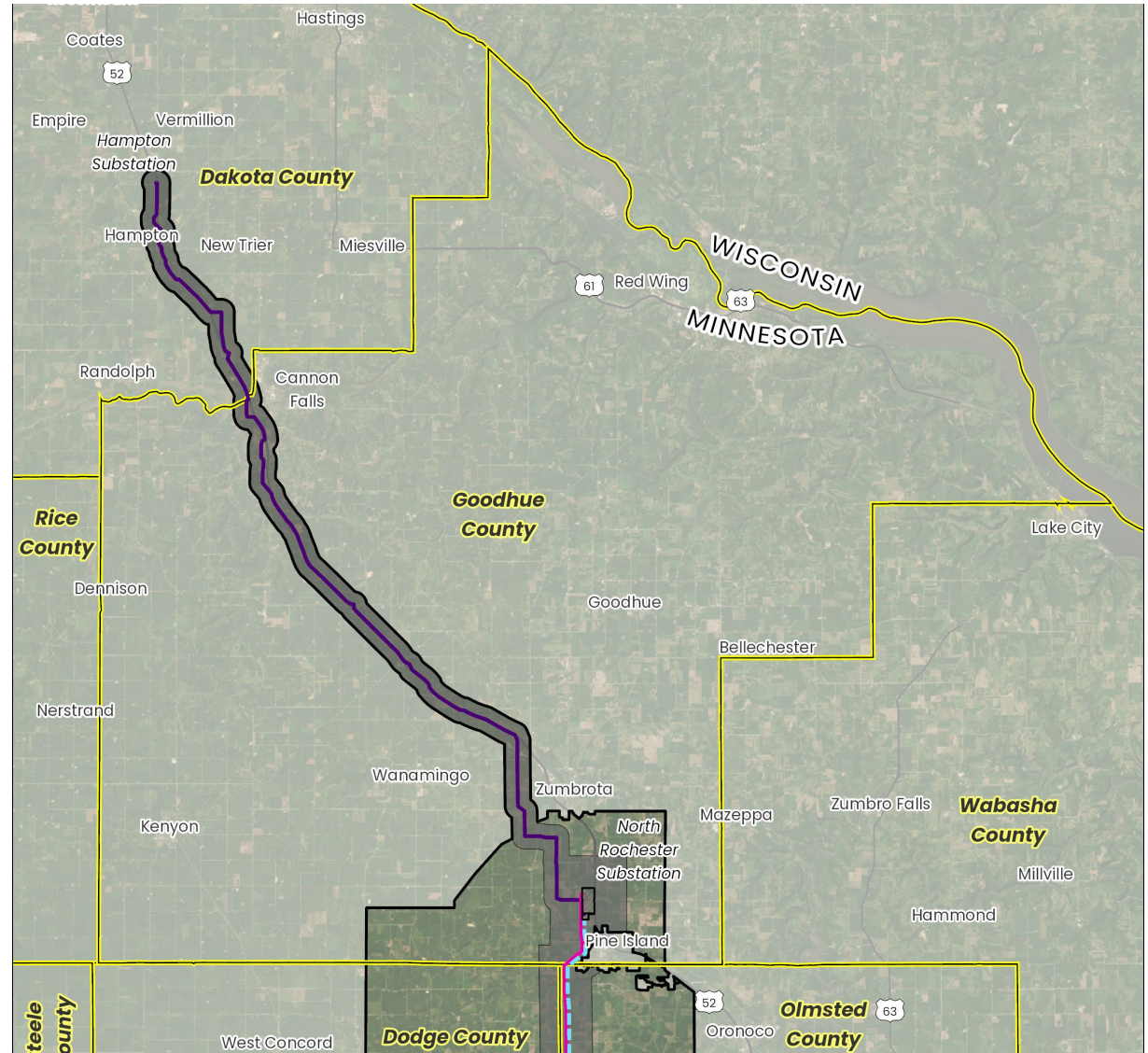
# IA border – Lakefield Junction – Pleasant Valley



# Goodhue County

## Preliminary Route Options

-  Pleasant Valley - North Rochester 765 kV
-  Pleasant Valley - North Rochester 345 kV
-  North Rochester - Hampton 345 kV
-  Preliminary Route Corridor
-  Project Substation
-  Notice Area
-  County Boundary
-  US Highway



Q&A



# Connect with us



## More information

For additional project information,  
please visit our website.



[PowerOnMidwest.com](https://PowerOnMidwest.com)



[Connect@PowerOnMidwest.com](mailto:Connect@PowerOnMidwest.com)



888-283-4678



Thank You

