

## Goodhue County

### Outside Agency Funding Request Form

<b>Budget</b>		<b>Estimated 2024</b>	<b>Estimated 2024</b>
<b>Revenues</b>			
	Fees:	\$ 71,026	\$ 73,095
	Grants:	\$ 846,862	\$ 871,528
	State/Federal Funding:	\$ 755,499	\$ 777,504
	Other Revenue:	\$ 5,236,687	\$ 5,389,212
<b>Total Revenues:</b>		<b>\$ 6,910,075</b>	<b>\$ 7,111,339</b>
<b>Expenses</b>			
	Salaries:	\$ 1,643,243	\$ 1,691,104
	Benefits:	\$ 410,811	\$ 422,776
	Professional Services:	\$ 292,632	\$ 301,156
	Services & Charges:	\$ 123,243	\$ 126,833
	Supplies & Materials:	\$ 184,583	\$ 189,960
	Other Expenses:	\$ 4,255,562	\$ 4,379,510
	Capital:		
<b>Total Expenses:</b>		<b>\$ 6,910,074</b>	<b>\$ 7,111,338</b>
<b>Requested Funding From County:</b>		<b>\$ 3,000</b>	<b>\$ 3,000</b>
<b>Number of Staff</b>		<b>21</b>	<b>21</b>



SOUTHERN MINNESOTA  
INITIATIVE FOUNDATION

525 Florence Avenue • PO Box 695 • Owatonna, MN 55060-0695  
PH 507.455.3215 • FAX 507.455.2098 • [smifoundation.org](http://smifoundation.org)

April 12, 2024

Scott Arneson  
Goodhue County Economic Development Authority  
509 5th St W  
Red Wing, MN 55066-0408

Dear Mr. Arneson,  
Since 1986, Southern Minnesota Initiative Foundation (SMIF) has worked to catalyze entrepreneurial activity within the region and has played a strong role in growing local businesses, from early stage investing and gap loans to traditional loans, as well as program funding in our focus areas of Early Childhood initiatives, community vitality, and economic development. Additionally, SMIF has invested \$56.9 million in grants in our 20-county region during this time period. While these grants support a wide range of projects – from providing books to young children to supporting small town growth – they each have had a transformative and long-term impact on the future of southern Minnesota.



We serve a diverse region where every county, and every community, has unique needs that we strive to address. Enclosed you will find a fact sheet of some of the specific things SMIF has been doing in your county, thanks to the enormous support we receive from our donors. *Thank you for your recent gift of \$2,500.00 on 5/30/2023. Will you consider making a donation to SMIF in 2025?* Because of generous supporters like you, communities across our region continue to see improvement and growth in countless ways.

Sincerely,

Tim Penny  
President and CEO

Collaborating for Regional Vitality





SOUTHERN MINNESOTA INITIATIVE FOUNDATION

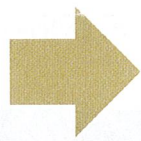
SMIF's investments and partnerships in

# Goodhue County since 1986

Southern Minnesota Initiative Foundation (SMIF) is a regional development and philanthropic organization that fosters economic and community vitality in southern Minnesota through a culture of collaboration and partnership. Serving 20 counties which includes 175 communities and one Native nation.

For every donation from Goodhue County of

# \$1



# \$22

is invested back into Goodhue County communities.\*

*\*Includes grants, loans & programming*



## 53 Loans

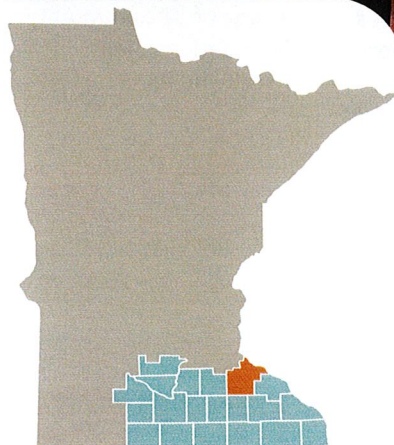
to support entrepreneurs

## 335 Grants

to support community projects

## \$9.6 Million

invested by SMIF in Goodhue County through grants, loans and programming



### Questions?

**Alissa Oeltjenbruns**  
Vice President of Community Vitality  
507-475-3056  
alisso@smifoundation.org

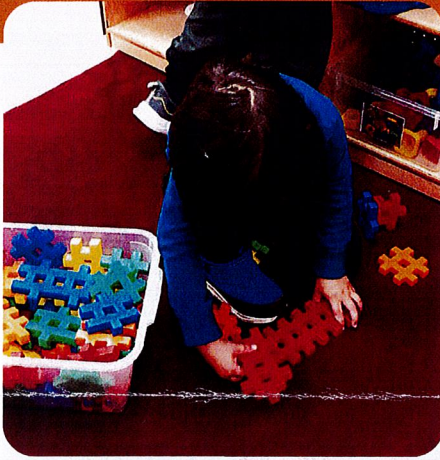


Check out SMIF's recent activity in your county



# SMIF's Recent Activity in Goodhue County

## Early Childhood Spotlight



### \$3,755 Early Care and Education Grant to Kenyon-Wanamingo Early Childhood

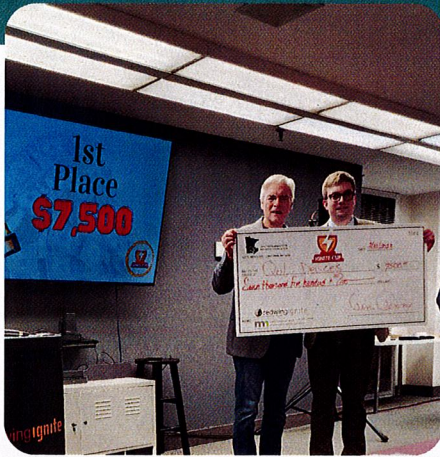
*"Our mission is to provide programs where parents feel they are their child's first and most important teacher. Our goals for this project were to have a positive impact on all who attended and make loving connections between parents and their children to form a foundation of good behavior and health decision-making."*

—Terra Haugen, Early Childhood Coordinator

### Other recent activity:

- 59 Early Childhood professionals attended free trainings
- 2023 Early Literacy Grant recipients: Three Rivers Community Action, Kenyon-Wanamingo Early Education, Pine Island Public Schools, United Way of Goodhue

## Entrepreneurship Spotlight



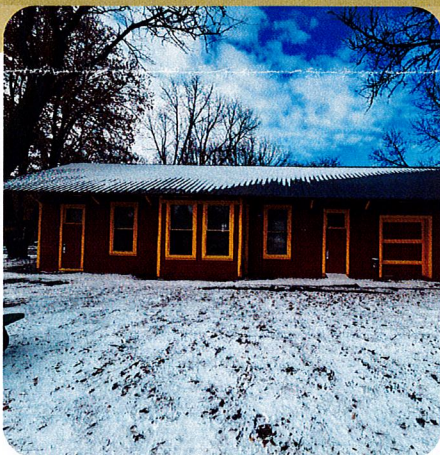
### Ignite Cup supports local entrepreneurs

*SMIF partners with Red Wing Ignite's annual Ignite Cup event, which is a regional pitch competition that awards prizes to competitors of startups. Competitors are given a platform to pitch their ideas to a live audience of other entrepreneurs, investors, and regional leaders. Winners advance to the MN Cup, where prizes are even bigger, giving these entrepreneurs the leg-up they need to succeed.*

### Other recent activity:

- Local Food Peer Network members: CannonBelles and Santa Martha Cafe
- Loan clients: River Bluff Technologies, The Greensted, JockLab, CannonBelles, Custom Iron Inc

## Community Vitality Spotlight



### Paint the Town grant awarded to City of Kenyon to paint historic Depot Park

*"A visual change, even just fresh paint, represents new possibilities. This project has been able to solve a need for a municipal building and generate new curiosity and passion for these civic spaces. Places that illustrate community pride perpetuate in more private spaces, and we hope that we can inspire neighbors to engage in these beautiful public spaces differently."*

—Courtney Bergey Swanson, Vice President, CEDA

### Other recent activity:

- Pine Island Community Foundation joined under SMIF's umbrella as one of 32 Community Foundations SMIF fiscally hosts

**2.7K** Children Supported

**78** Entrepreneurs Supported