



GOODHUE COUNTY MINNESOTA

TO EFFECTIVELY PROMOTE THE SAFETY, HEALTH, AND WELL-BEING OF OUR RESIDENTS

COMMITTEE OF THE WHOLE AGENDA **COUNTY BOARD ROOM** **GOVERNMENT CENTER** **RED WING, MN**

SEPTEMBER 7, 2021
8:00 A.M.

Virtual Meeting Notice

Due to concerns surrounding the spread of COVID-19, it has been determined that in-person meetings or meetings conducted under Minn. Stat. 13D.02 a are not practical or prudent. Therefore, meetings that are governed by the Open Meeting Law will temporarily be conducted by telephone or other electronic means pursuant to Minn. Stat. 13D.021.

The Goodhue County Board of Commissioners will be conducting a Committee of the Whole meeting pursuant to this section on September 7, 2021 at 8:00 a.m. in the County Board Room. The County Administrator and/or County Attorney will be present at the meeting location. All County Commissioners attending will appear by telephone or other electronic means. The public may monitor the meeting from a remote site by logging into <https://global.gotomeeting.com/join/315462341> or calling 1 866 899 4679 OR 1 571 317 3116 any time during the meeting. Access Code: 315-462-341

1. 2022 Redistricting Introduction Presentation

Documents:

[2022 Redistricting Introduction Presentation.pdf](#)



Brian J. Anderson
Goodhue County Auditor/Treasurer
Goodhue County Finance & Taxpayer Services

Brian.anderson@co.goodhue.mn.us
509 W. Fifth St.
Red Wing, MN 55066
Phone (651) 385-3032

TO: County Board of Commissioners
FROM: Brian J. Anderson, Goodhue County Auditor/Treasurer
SUBJECT: 2022 Redistricting Introduction Presentation
DATE: September 7, 2021

Background:

Every ten years following the U.S. Census, the Minnesota Secretary of State's Office is in charge of providing redistricting guidance as per MN State Statute. There is an order in which redistricting must be completed by the various jurisdictions, and for counties the completion date is April 26, 2022. This is 80 days from when the Legislature approves their redistricting plan, after the cities have approved their redistricting plan, and well before the 2022 election filing period.

Discussion:

The following presentation is meant as an introduction to the 2022 Redistricting process as it relates to Goodhue County. Each governmental jurisdiction is in charge of their own redistricting, but Goodhue County will communicate and assist with the other jurisdictions throughout the whole process to ensure it goes as smooth and transparent as possible. The State will be releasing more Census Data on September 23 at which time staff will review the data and update the Board accordingly. We are not going to present any plans at the meeting, but we will discuss the following:

- Preliminary Census Data Results
- Redistricting Overview
- County Commissioner District Plan
- Getting Started
- Questions

Please take time to review the presentation, but know that we are not required to approve anything in the near future and that staff will be bringing information to the Board for discussion, review, and approval in the coming months.

GOODHUE COUNTY BOARD OF COMMISSIONERS

LINDA FLANDERS
1st District
1121 West 4th Street
Red Wing, MN 55066

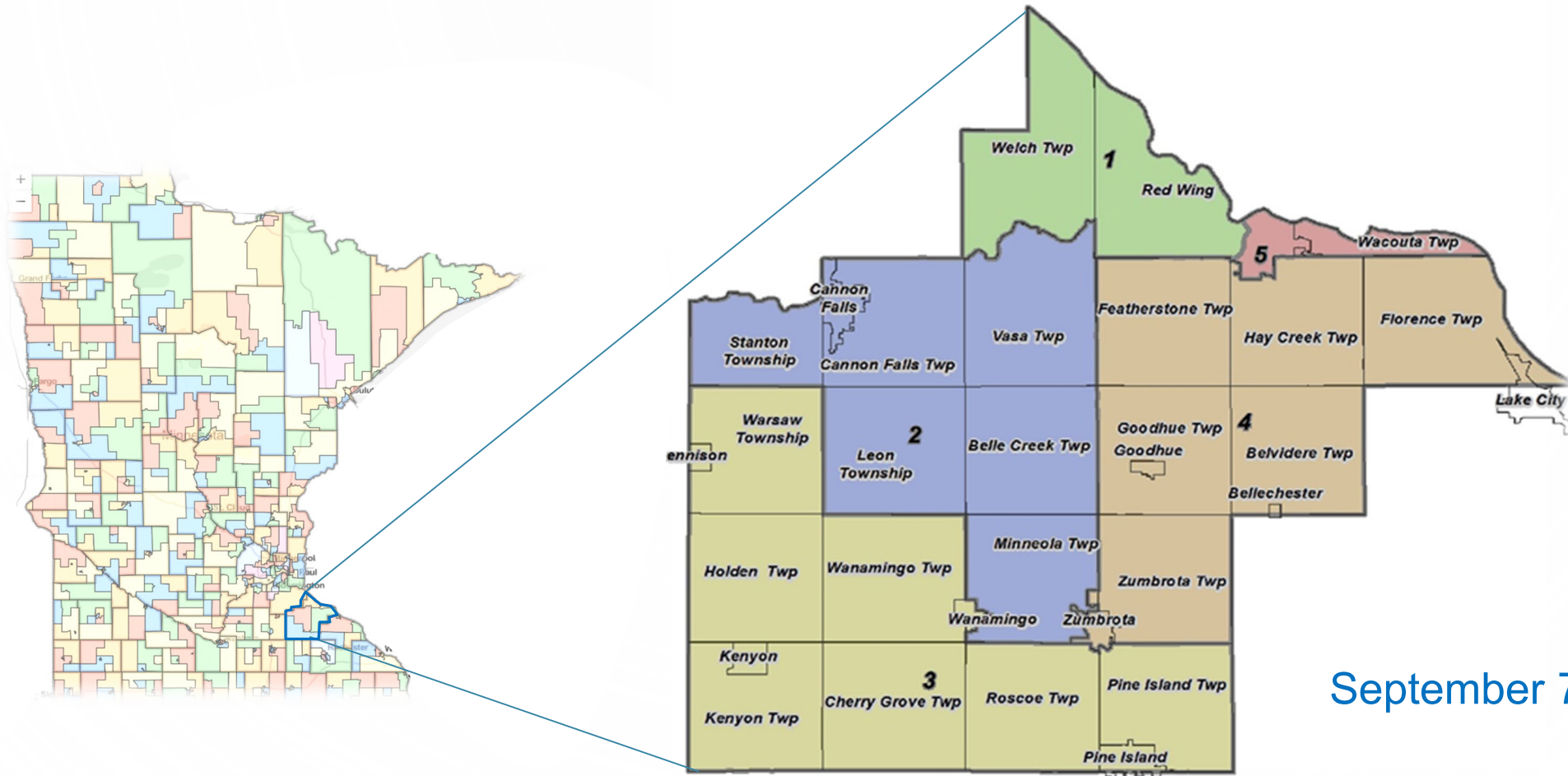
BRAD ANDERSON
2nd District
10679 375TH St. Way
Cannon Falls, MN 55009

TODD GRESETH
3rd District
46804 Hwy 57 Blvd.
Wanamingo, MN 55983

JASON MAJERUS
4th District
39111 County 2 Blvd.
Goodhue, MN 55027

PAUL DROTOS
5th District
1825 Twin Bluff Rd
Red Wing, MN 55066

GOODHUE COUNTY 2022 REDISTRICTING



September 7, 2021

Presentation Overview

- Preliminary Census Data Results
- Redistricting Overview
- County Commissioner District Plan
- Getting Prepared
- Commissioner Recap

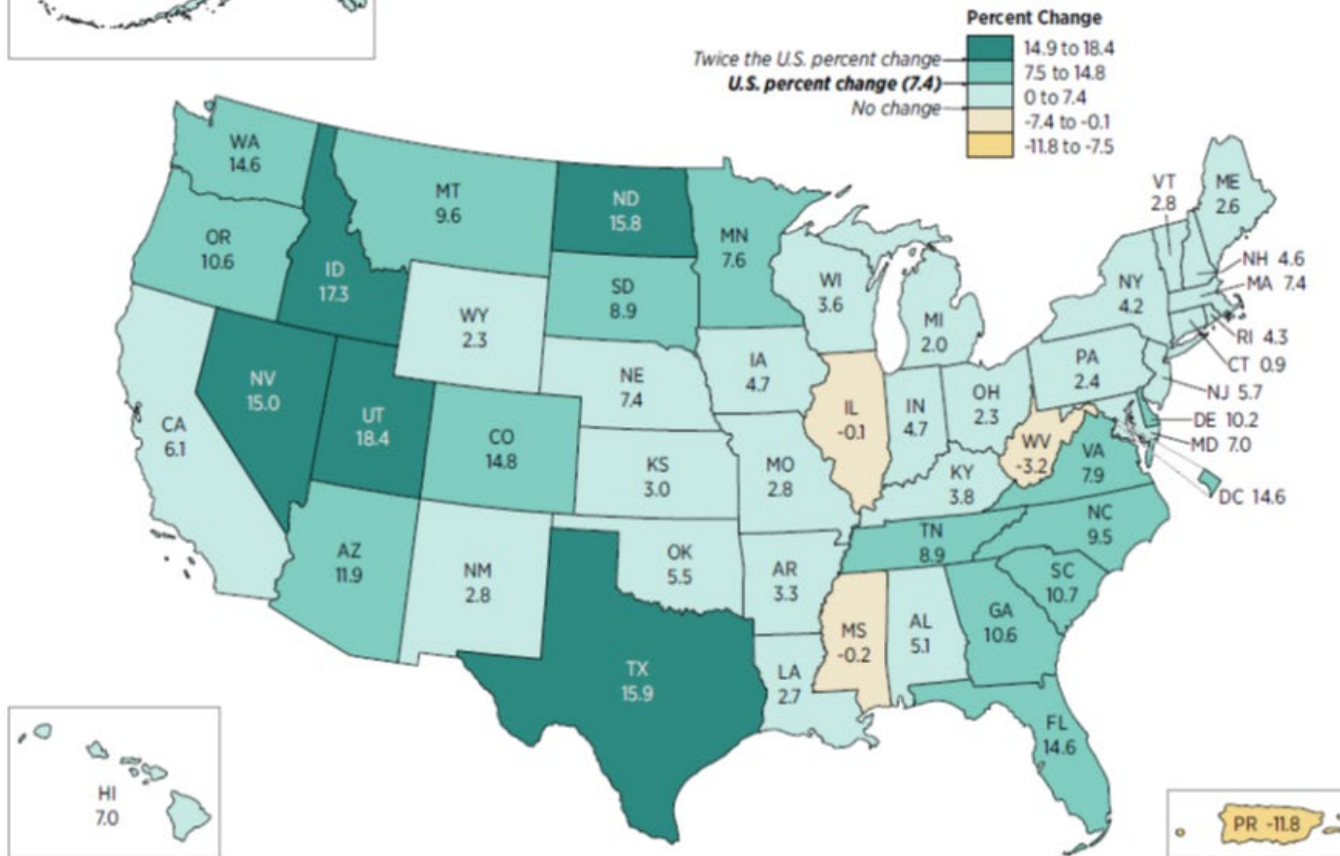
The background is a light blue gradient. There are several realistic water droplets of various sizes in the corners: top-left, top-right, and bottom-right. The text is centered in the middle of the page.

Preliminary Census Data Results

First 2020 Census Numbers Released



Percent Change in Resident Population for the 50 States, the District of Columbia, and Puerto Rico: 2010 to 2020



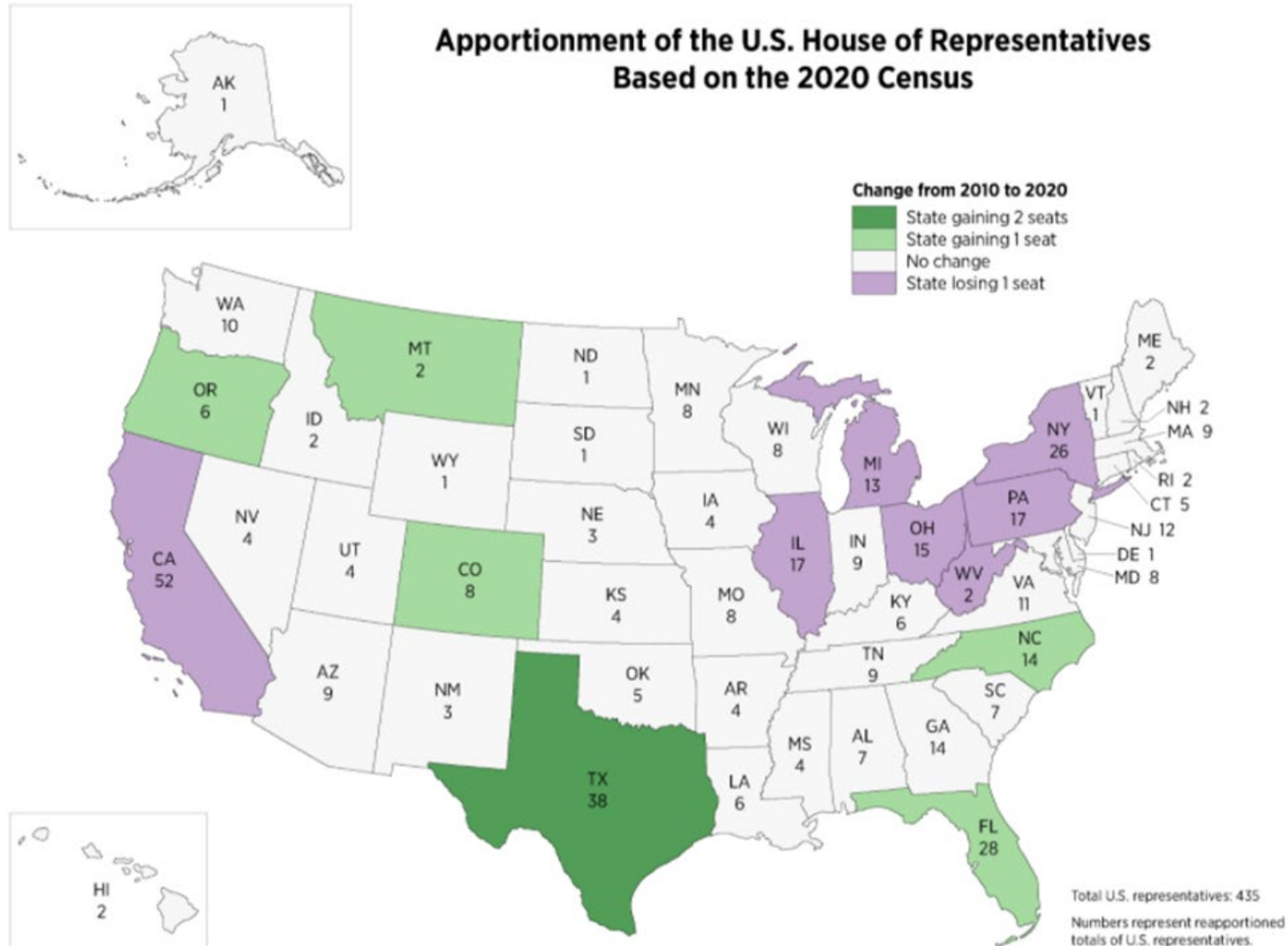
Minnesota

+402,000 people since 2010
(7.6%) or 5,706,494.

U.S.

+22.7 million (7.4%) or
328.2m.

2020 Apportionment Outcomes

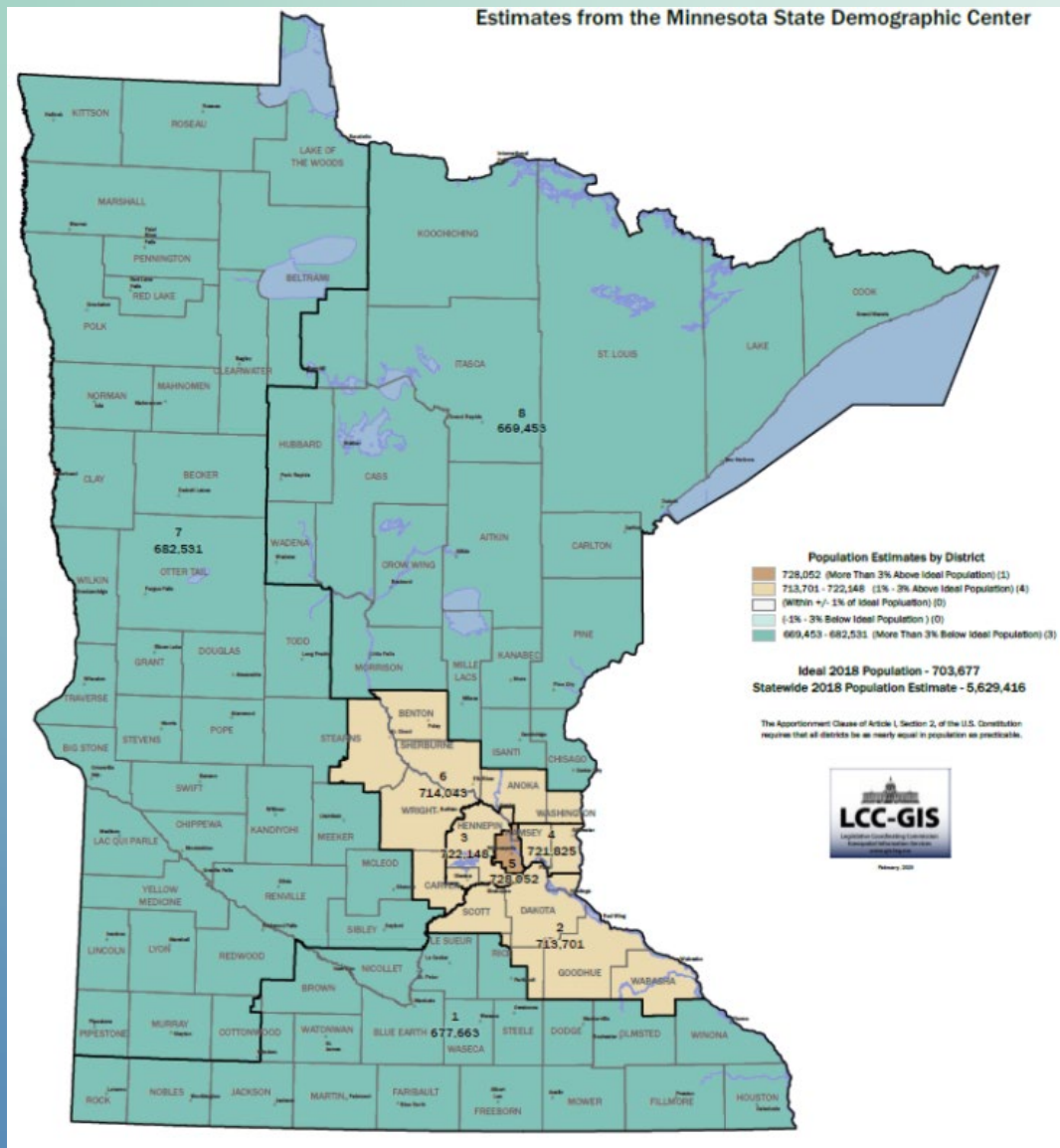


MN Outcome:

After the 2010 and the 2020 Censuses, Minnesota received the **very last** seat in the U.S. House.

The seat was saved by **8,739** people counted in 2010, and by **26** people counted in 2020.

Redistricting of Congressional Districts



Districts 1, 7 and 8 will need to expand in geographic size to meet ideal population size of ~ 710,000

2020 Census Population – Goodhue County

- **2010 Census** **46,183**
- 2011 Estimate 46,099
- 2012 Estimate 46,140
- 2013 Estimate 46,106
- 2014 Estimate 46,016
- 2015 Estimate 46,060
- 2016 Estimate 46,226
- 2017 Estimate 46,307
- 2018 Estimate 46,299
- 2019 Estimate 46,340
- **2020 Census** **47,582**
 - 3.03% Increase from 2010
- **District 1** **9,094**
- **District 2** **9,352**
- **District 3** **9,567**
- **District 4** **10,892**
- **District 5** **8,677**

Redistricting Overview

Redistricting Is...

what ...the process of redrawing
boundaries of election districts

why ...to equalize representation

when ...following the decennial census

where ...all over the US and MN

who ...by legislatures & local governments

Who Does Redistricting In MN

Legislature

- Congressional and Legislative Districts

City Councils

- Wards and Precincts

Township Boards

- Precincts

School Boards

- School Board Election Districts

County Board

- Commissioner Districts and Soil & Water Districts

Redistricting Timeline Changes

September 23 rd	Census Releases Redistricting Data
February 1 st	Precinct Caucuses
February 8 th	February Uniform Election Date
February 15th	Legislative Redistricting (intended deadline)
March 8 th	Township Elections
March 29th	Precinct & Ward Redistricting Deadline
April 12th	April uniform election date
April 26th	County & Other Redistricting Deadline
May 10th	May uniform election date
May 17 th	State/County Filing Period Opens
August 9 th	State Primary Election
November 8 th	State General Election

2022 Election Timeline

February 1 st	Precinct Caucuses
February 8 th	February Uniform Election Date
February 15th	Legislative Redistricting (intended deadline)
March 8 th	Township Elections
March 29th	Precinct & Ward Redistricting Deadline
April 26th	County & Other Redistricting Deadline
May 17 th	State/County Filing Period Opens
August 9 th	State Primary Election
November 8 th	State General Election

2021 - 2022 Timeline Details

September 23, 2021

Census releases redistricting data

Usually the detailed Census data used for redistricting is released around April 1, but this was delayed due to the pandemic.

February 1, 2022

Precinct caucuses

Political parties will still hold precinct caucuses, but they will use the same precinct boundaries that were used at the 2020 General Election.

February 15, 2022

Intended deadline to redistrict legislative districts

In Minnesota Statutes, the legislature set itself a deadline to redistrict congressional and legislative districts. Even if this redistricting is done by a judicial panel instead, it is likely that the court will issue a redistricting plan around this time.

2021 - 2022 Timeline Details

March 29, 2022

Deadline to reestablish precinct & redistrict city wards

All cities, towns, and counties that administer precincts must reestablish precinct boundaries by this date. Cities that have wards must also complete their redistricting of ward boundaries as well.

April 26, 2022

Deadline for county and other redistricting

Redistricting of other districts must be completed. This includes county commissioner districts for all counties. It also includes school board member districts and soil and water conservation districts, if those offices are elected by district.

May 17, 2022

Candidate filing opens for federal, state, and county offices

Candidates can start filing for federal, state, and county offices on this date, using the redistricted districts.

2021 - 2022 Timeline Details

August 9, 2022

State Primary Election

This is the first election that will use the redistricted precincts and districts.

November 8, 2022

State General Election

Elected officials for the redistricted districts will be chosen at this election.

2020 Census Data

2020 Census results delayed

- Reapportionment data (statewide populations)
 - Delayed until 4/26/21
- Redistricting data (block population & demographics)
 - GIS data & maps have been available
 - Population in “legacy” format released 8/12/21
 - User friendly formats on data.census.gov by 9/30/21
 - <https://www.census.gov/rdo> (PL 94-171)
 - State Demographer <https://mn.gov/admin/demography>
- More info on accessing & using Census data coming soon

Congressional / Legislative

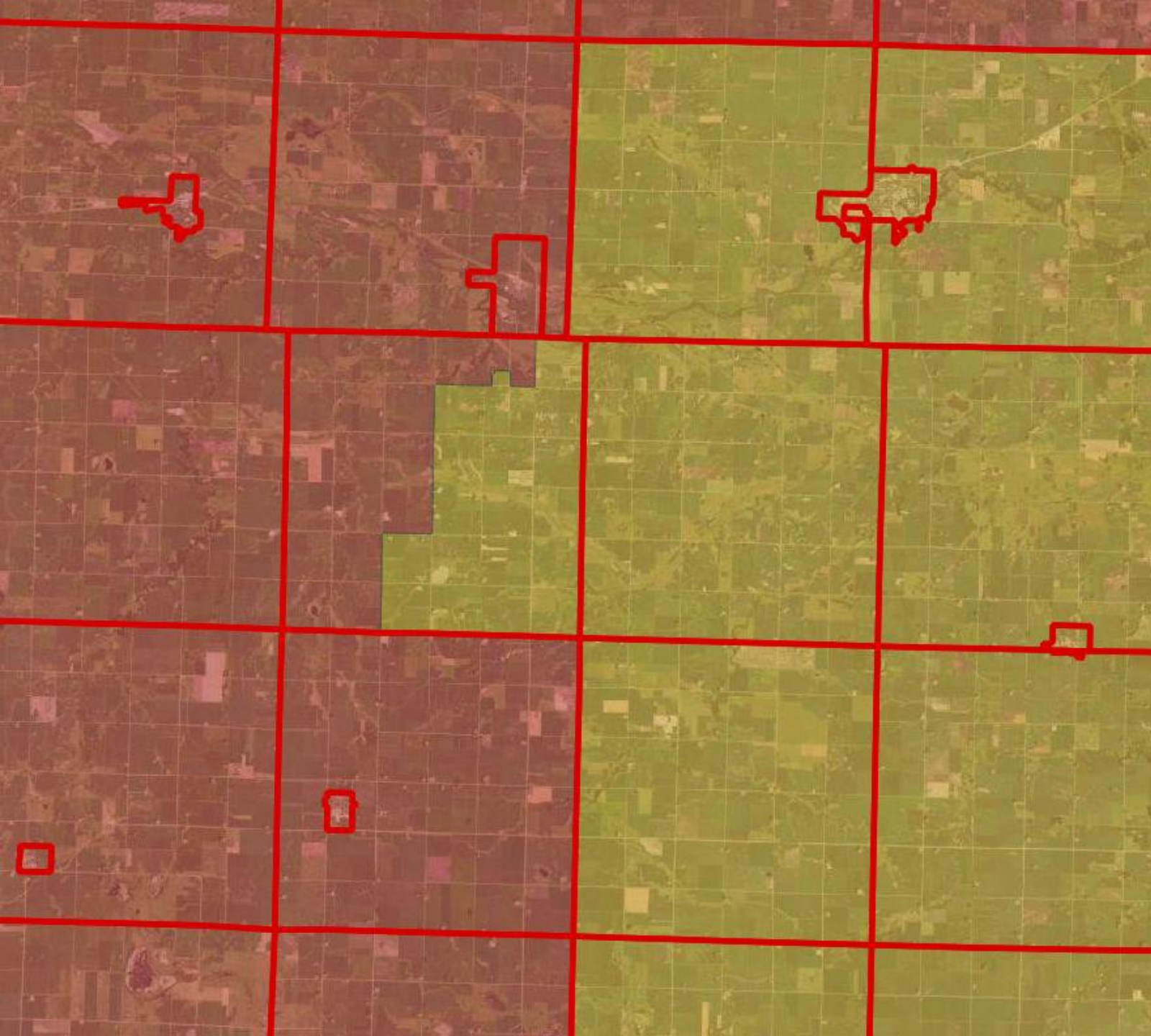
(2/15/22)

Legislative responsibility but...

Judicial process has determined recent redistricting plans

After federal/state plans completed:

- OSS sends plan to counties
- Counties send boundaries to cities & towns
- Counties publish and post boundaries
- Legislative GIS office – GIS data



Congressional &
Legislative
boundaries
can go anywhere

Don't need to
follow municipal
boundaries



Precinct
boundaries
must follow
these district
boundaries

Even down a
driveway!

Precincts

(3/29/22)

After federal/state plans complete:

- All cities & towns must establish precinct boundaries
 - Also counties if unorganized territory¹

Go into effect for State Primary

Pay special attention to:

- Municipalities with multiple precincts
- Municipalities split by congressional/legislative districts
- Precincts that are also commissioner district boundaries

Precincts

(3/29/22)

After changes:

- Notify county auditor & OSS
- Inform even if no change?

Changes from 2012:

- Not required to use Census block boundaries
- Do not need to use physical features
- Naming convention requirement removed (when not using physical features)

Polling Places

(3/29/22)

After federal/state plans complete:

- All cities & towns must designate polling places
 - Also counties if unorganized territory

Notify households of changes

Law change:

- Chapter 12 – designate polling places after redistricting
- Precinct & polling place can be done together

Wards

(3/29/22)

Wards must be:

- Compact & contiguous
- As equal in population as practicable
- Other requirements in charter?

Council members

- If redistricted into different ward, may continue to serve remainder of term

Failure to redistrict

- If council fails to confirm existing wards or redistrict wards, mayor and council members will lose compensation until it is done

Other Districts

(4/26/22)

School Districts:

- Most just need to keep track of the process
 - Especially changes in polling places
- If elect members by district, may need to redistrict

Soil & Water Districts:

- If elect by district, may need to redistrict

The background is a light blue gradient with several realistic water droplets of various sizes scattered in the corners. The droplets have highlights and shadows, giving them a three-dimensional appearance.

County Commissioner District Plan

County Commissioners

(4/26/22)

Redistricting may be required if:

- Precinct boundary that was a commissioner district boundary is no longer there
- Annexations have created non-contiguous district
- District population varies by more than 10% from average
- Majority of districts can't have minority of population

County boards can choose to redistrict even if not required.

Commissioner District Plan

Will include:

- District description
- District numbers
- Election schedule to ensure staggered terms
 - Do not necessarily have to continue same pattern of terms
- Sample resolution in Redistricting Guide

Notifications & Contests

After plan is complete:

- Must publish district plans
- Recommend they be posted as well
- Notify OSS, cities, towns

Voters may file contest to:

- Require county to redistrict
- Require revision to plan passed by county

Cost Involved In Redistricting

- Required public hearing with at least 3 weeks published notice for the county board to consider adopting a new redistricting plan if any changes have to be made to commissioner districts (MS 375.025 sub. 1)
- Cost involved with redistricting including a notice published illustrating or describing all the federal, state, county changes in boundaries – typically maps and a listing of the precincts involved. This is under MS 204B.14 sub. 4.
- PVCs sent to any voter who has a change in district
- Possible OT or additional staff to update SVRS records, polling place changes
- 204B.135 sub. 5 does authorize a \$1 per capita levy for redistricting expenses

County Commissioner District Requirements

- As many Districts as Commissioners
- District bounded by precinct lines
- Contiguous territory
- Regular and compact
- 10% Rule
- Plan filed with State Auditor

10% RULE

- District populations cannot vary more than ten percent from the average for all districts in the county, unless the result forces a voting precinct to be split. (M.S. 375.025, subd. 1)

Example:

- County population / by commissioner districts x 10% = Threshold
- $47,582 / 5 = 9,516$
- $9,516 \times 10\% = \mathbf{952 \text{ Threshold}}$
- All districts must be in the range of 8,565–10,468 residents

5% Rule

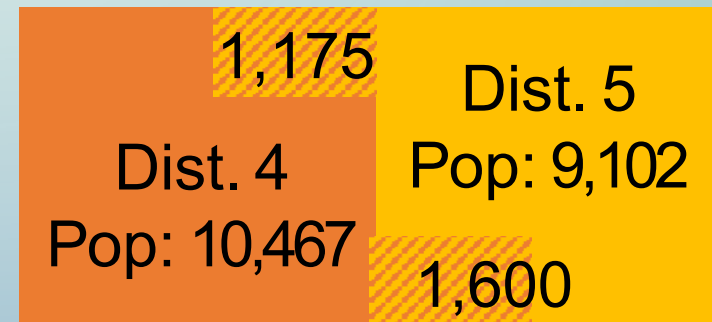
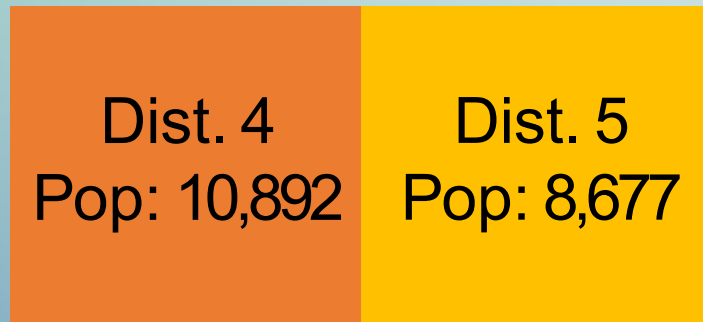
- If the commissioner's district has had a change greater than the 5% Rule, then they would have to run again in the next election.
 - County population is 47,582 with 5 commissioners
 - Average population is 9,516
 - The Threshold is $9,516 \times 5\% = 476$

Example:

- Dist. 1 had a pre-redistricting pop. of 9,000
- Dist. 1 had a post-redistricting pop. of 8,900
- Population shifted out of district = 300
- Population shifted into the district = 200
- Total population net shift is $500 > 476 =$ Commissioner would have to run again in next election.

Need To Run For Re-Election?

- If normal 4-year term is up in 2022: YES
- If not, look at population shifted due to change in district boundaries: greater than 5% of ave. pop.?



County has 5 commissioner districts and a 2020 total population of 47,582, so:

$$47,582 \div 5 \times 0.05 = 476$$

Total county pop. ÷ # dist. × 0.05 = **THRESHOLD**

$$1,600 + 1,177 = 2,775$$

Pop. shifted in + pop. shifted out = **TOTAL SHIFT**

Total Shift 2,775 > Threshold 476, so District 4 & 5 must run again

Additional Details for Plan

- **Election Judge Lists**
 - Party lists will be precincted using post-redistricting data
- **Pollfinder**
 - Will have disclaimer after Legislative redistricting
- **Registered Voter Lists**
 - Will communicate when new data is fully available
- **Redistricting PVCs**
 - Will be queued in June, sent in early July
 - Plan ahead for budget and quick payment
- **Statewide precinct GIS data**
 - Local GIS data helps
 - PDF maps and descriptions still important

2020 Census Population Recap

Goodhue Population

- District 1 9,094
- District 2 9,352
- District 3 9,567
- District 4 10,892
- District 5 8,677

Redistricting Parameters

- Total Pop. 47,582
- District Avg. 9,516
- 5% Threshold 476
- 10% Threshold 952
- District Range 10,468 - 8,565

Getting Prepared

What Can You Do Now?

Communicate

- Inform elected bodies
- Connect with other staff (esp. GIS)
- Review & share OSS Redistricting materials
 - Redistricting Guide
 - Online trainings
- Talk to other administrators
- Gather & ask questions

What Can You Do Now?

Identify redistricting potential in area

- What jurisdictions may redistrict?
 - Cities with wards
 - School Districts with member districts (subdistricts)
 - SWCD elected by district
 - Commissioner Districts
 - Use SVRS' Voter Reg Count by District report
 - Review Census data

What Can You Do Now?

Identify redistricting potential in area

- Plan for possible changes
 - What precincts might change – talk to clerks
 - Process & staffing for address ranges changes
 - SVRS Precinct Finder report
 - Have cities/towns review, help plan changes

What Can You Do Now?

Tidy up voters & address ranges in SVRS

- SVRS Maintenance Reports
 - Voters without Address Range
 - Voter Precinct Not Matching Precinct Finder
 - Overlapping address ranges
 - Voters with Address Description
- OSS will do other follow-up
 - Flag other issues
 - Help facilitate changes
 - Suggest more standardizations
- Voter address auditing

Commissioner Recap

- September 23rd the State will release data.
- Most likely will have to redraw commissioner boundaries based on population.
- May create some commissioner(s) running again in 2022.
- Must approve redistricting by **April 26th, 2022.**
- County will have to wait for Legislature and Cities before we can really complete its work.
- More public meetings to come with Commissioner District Plan with maps, details, and options.

Redistricting Resources

MN Secretary of State

www.sos.state.mn.us/election-administration-campaigns/election-administration/redistricting/?searchTerm=redistricting

Goodhue County

<https://co.goodhue.mn.us/1415/Redistricting>