



GOODHUE COUNTY MINNESOTA

TO EFFECTIVELY PROMOTE THE SAFETY, HEALTH, AND WELL-BEING OF OUR RESIDENTS

COMMITTEE OF THE WHOLE AGENDA

ZUMBROTA CITY HALL
175 WEST AVENUE
ZUMBROTA, MN

AUGUST 11, 2022
8:00 A.M.

Virtual Meeting Notice

Due to concerns surrounding the spread of COVID-19, it has been determined that in-person meetings or meetings conducted under Minn. Stat. 13D.02 a may not be practical or prudent. Therefore, meetings that are governed by the Open Meeting Law will temporarily be conducted by both in person and by telephone or other electronic means pursuant to Minn. Stat. 13D.021.

The Goodhue County Board of Commissioners will be conducting a committee of the whole meeting pursuant to this section on August 11, 2022 at 8:00 a.m. at Zumbrota City Hall. The County Administrator and/or County Attorney will be present at the meeting location. County Commissioners may appear in person or attend by telephone or other electronic means. The public may attend in person or monitor the meeting from a remote site by logging into <https://meet.goto.com/495892997> or calling [1 877 309 2073](tel:18773092073) any time during the meeting. Access code: 495892997

1. Soil & Water Conservation District- E. Coli

Documents:

[Goodhue County Commissioners SWCD Supervisors.pdf](#)

Goodhue County Commissioners & SWCD Supervisors - COW

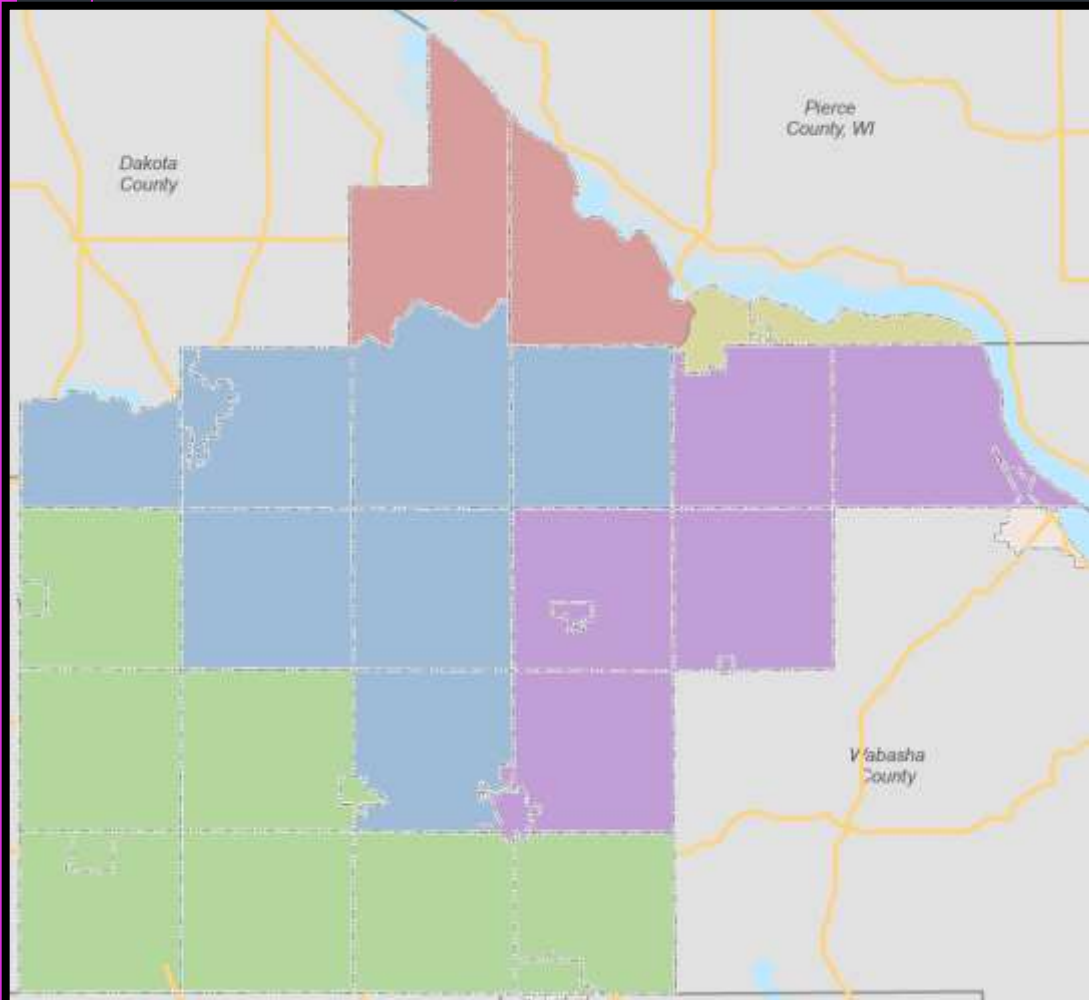
August 11th 2022 8am Zumbrota City Hall

Agenda

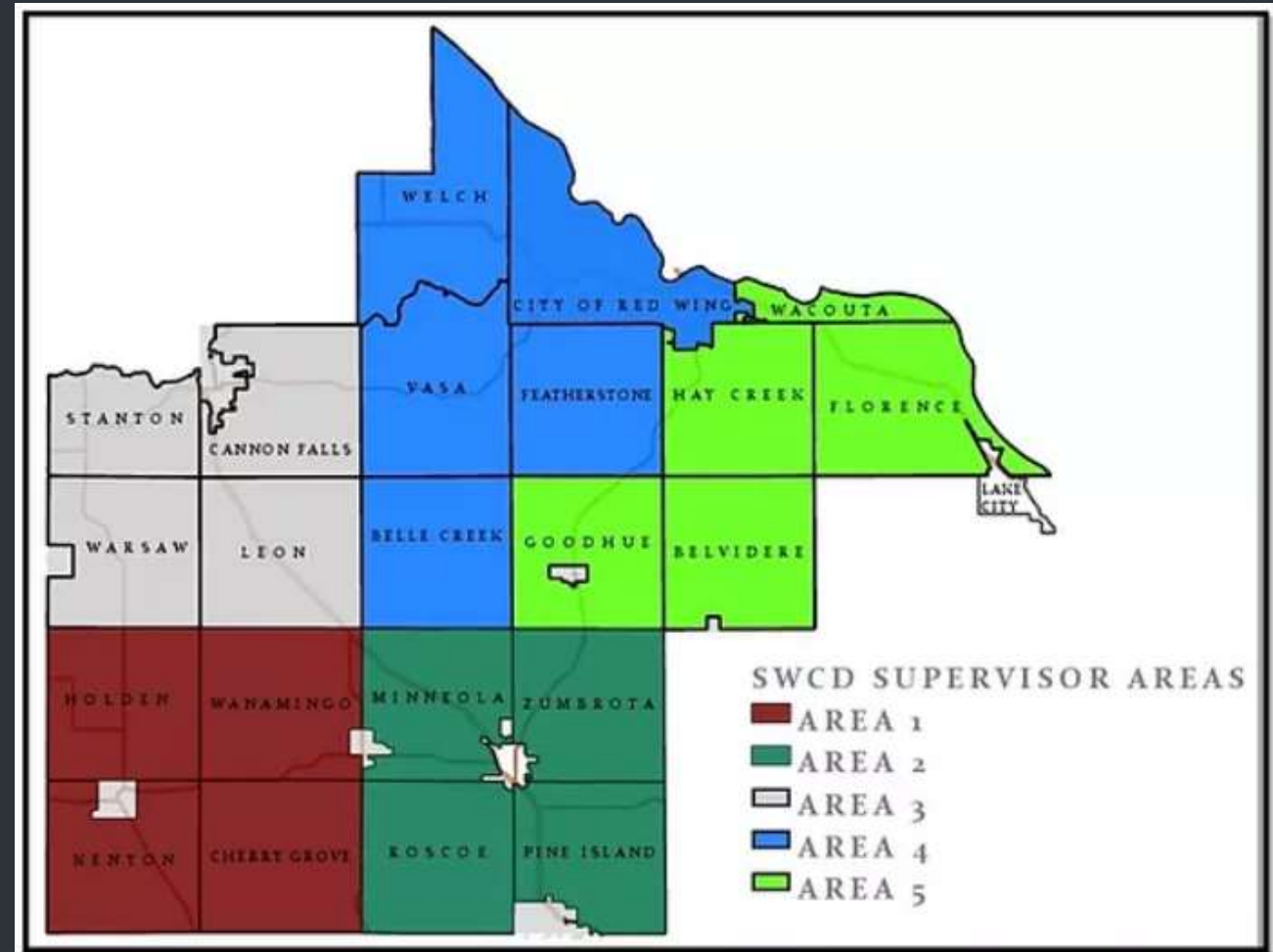
- Introductions
- Review of County/SWCD Cooperative Programs
- Status of Water Quality in Goodhue County
- Q/A

Welcome and Introductions

Commissioner Districts



SWCD Supervisor Districts



- County/SWCD Cooperative Programs

County Feedlot Program

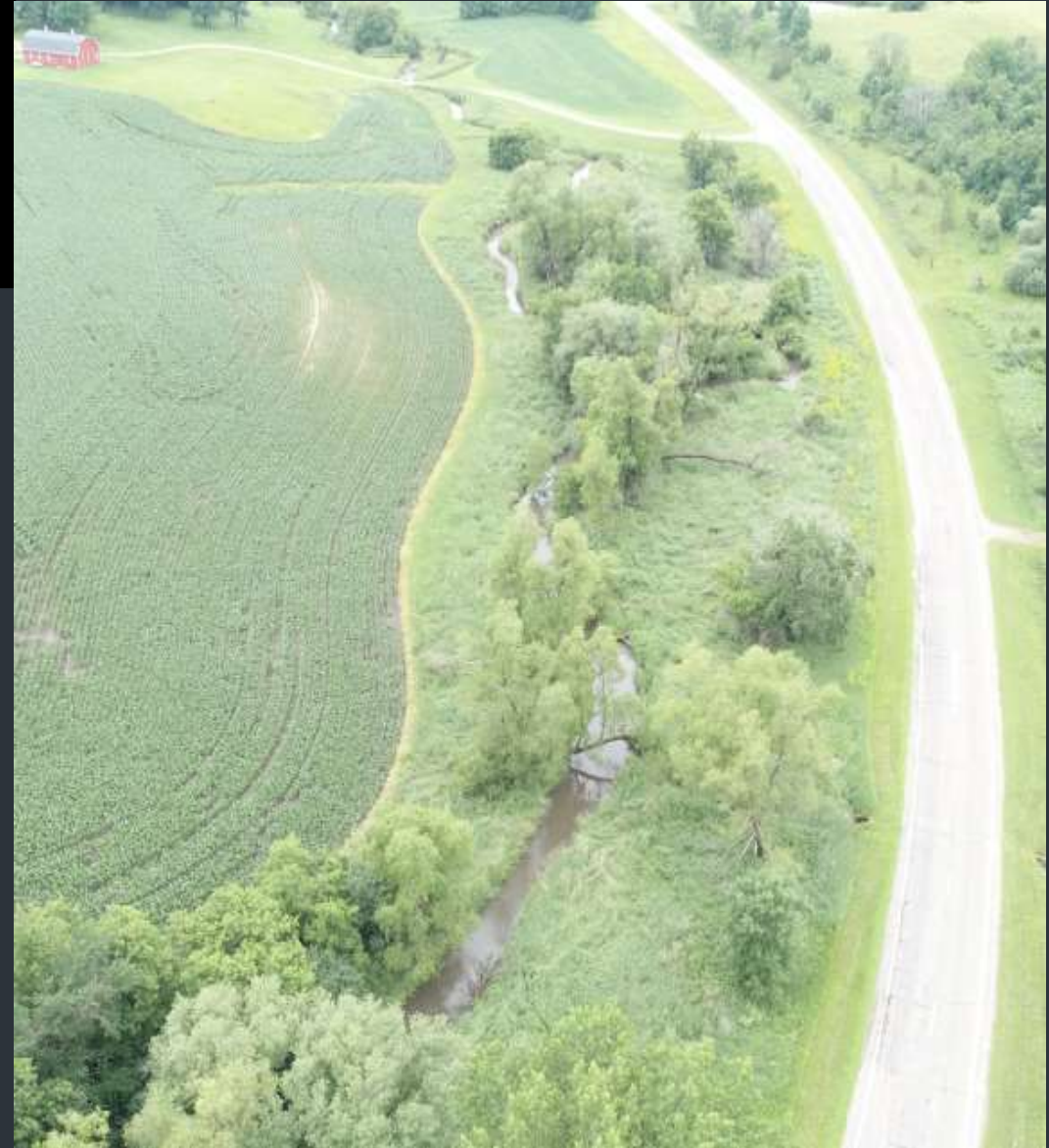
- County Delegated the MPCA Feedlot Program to the SWCD in ~2000
- Assist landowners with Minnesota's Feedlot Regulations and Nutrient Management Guidelines
- County Feedlot Ordinance and County Registrations (~1,000*)



- County/SWCD Cooperative Programs

Stream Buffers

- SWCD Provides Technical Assistance to Landowners and Verify Compliance
- Goodhue County Land Use Enforces the Buffer Law
- Current Non-Compliant Parcels = 1
- 2022 Aerial Flight



- County/SWCD Cooperative Programs

Wetland Conservation Act

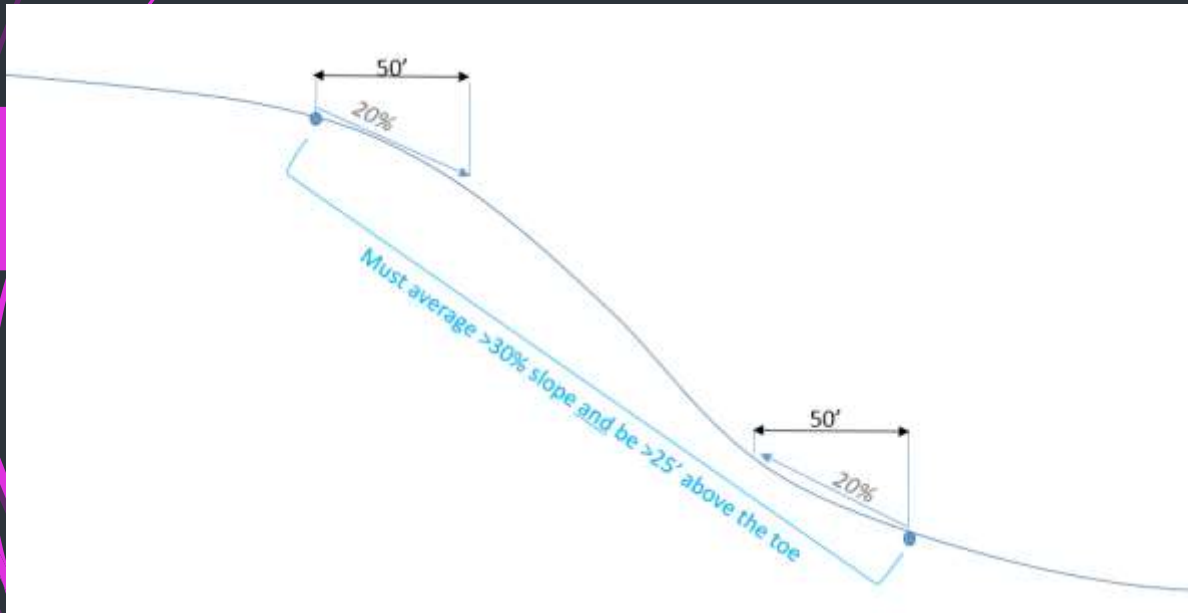
- County Delegated the Wetland Conservation Act to the SWCD in 1990s.
- Assist landowners with Minnesota's "No Net Loss" of Wetlands Rule



- County/SWCD Cooperative Programs

Technical Assistance with the County Zoning Ordinance

- Seeding Recommendations
- Solar Project Reviews/Maintenance
- Erosion Control Review/Inspections
- Bluffland Inspections
- Building Permit Reviews, CUPs
- AIS Team



- County/SWCD Cooperative Programs

County Ditch

- Assist with Surveys and Inspections
- Local Contact for Ditch Questions
- Tile Installation nearly complete



- Status of Water Quality in Goodhue Co.

MPCA is the State Agency Tasked with Monitoring our Streams/Lakes

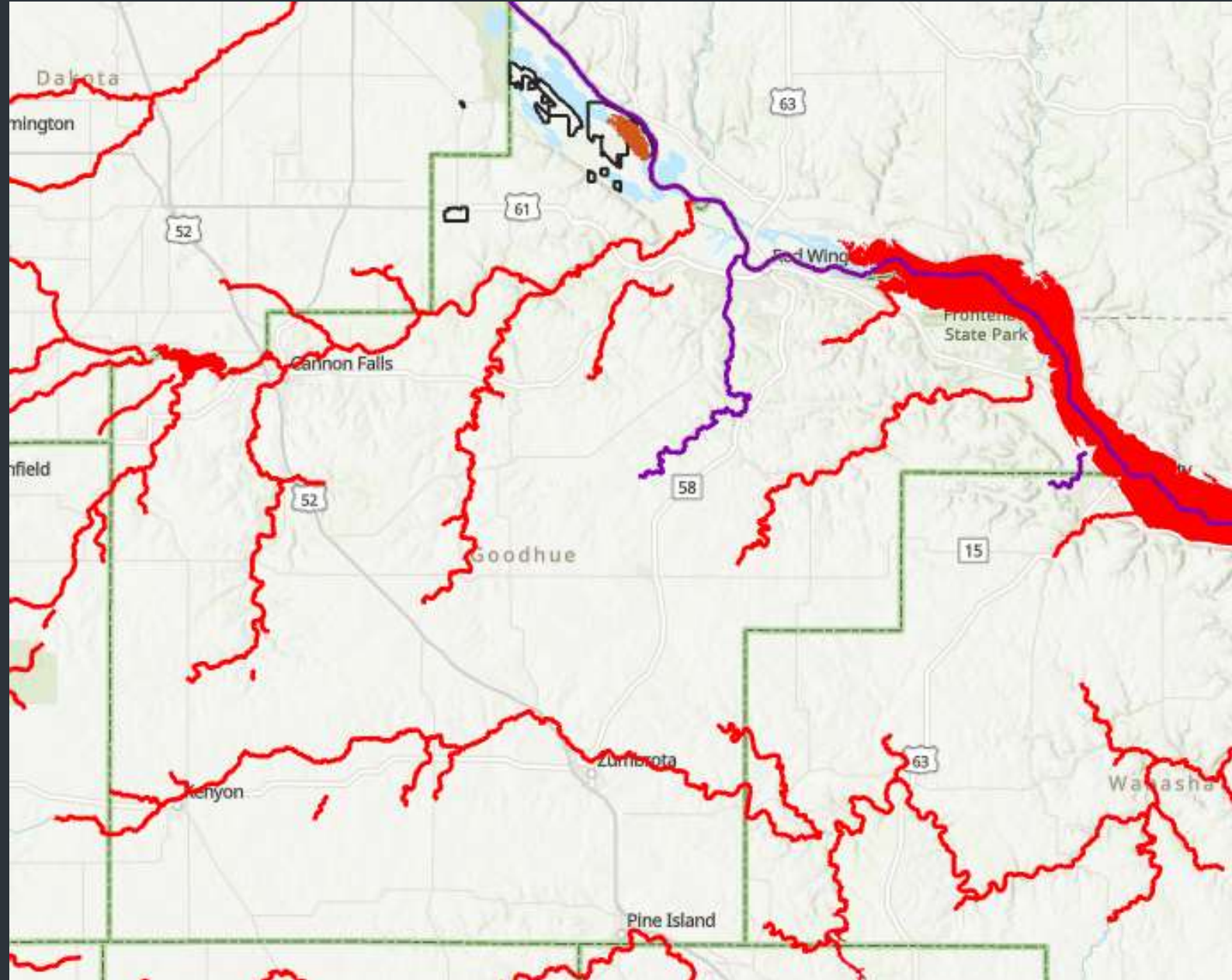
- 10 year cycle on testing
- Assess for 3 main uses
 - Aquatic Life
 - Aquatic Recreation
 - Drinking Water

Source from MPCA Impaired Waters List:

<https://www.pca.state.mn.us/water/impaired-waters-viewer-iwav>

And the MPCA Tableau site:

<https://public.tableau.com/app/profile/mpca.data.services/viz/WaterQualityAssessmentResultsDataViewer/HomePage>



- Status of Water Quality in Goodhue Co.

Turbidity Impairments - AQL

- N. Fork Zumbro
- Belle Creek
- Little Cannon
- Spring Creek
- Mississippi River
- Cannon River
- Butler Creek
- Wells Creek*

E.Coli Impairments - AQR

- N. Fork Zumbro
- Belle Creek
- Little Cannon
- Spring Creek
- Mississippi River
- Cannon River
- Butler Creek
- Wells Creek
- Hay Creek
- Bullard Creek

Most Recent Monitoring

- Cannon River 2022-23
- Miss/Lake Pepin 2018-19
- Zumbro 2023-24

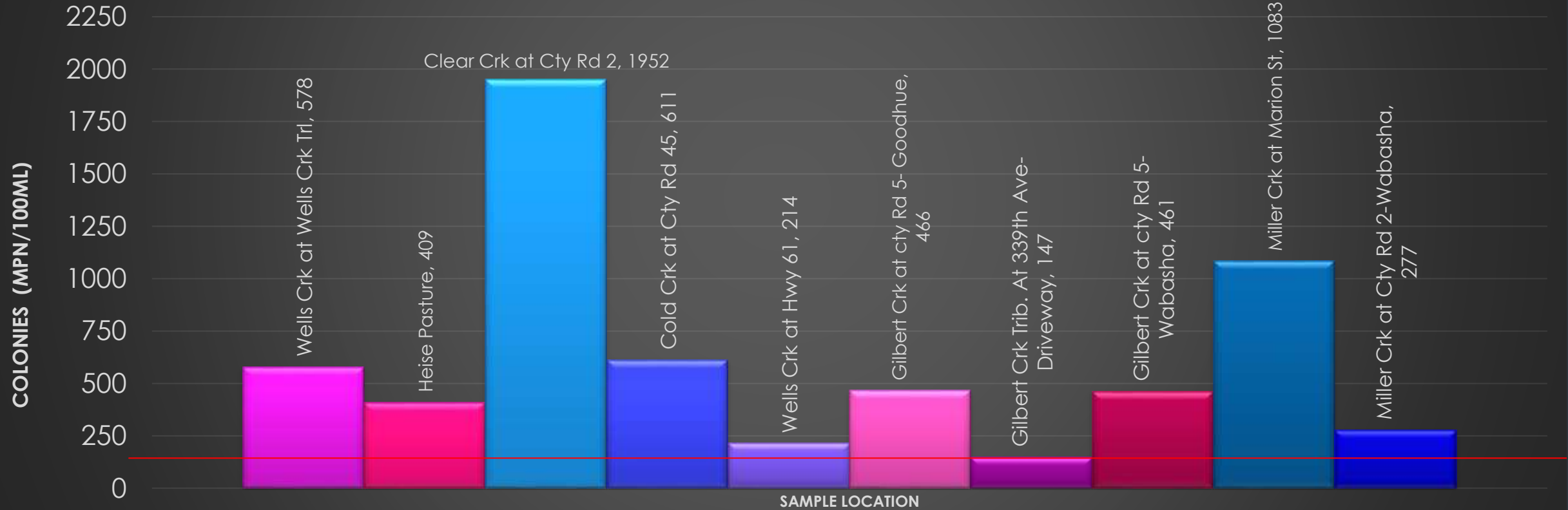
Our Cold Water Streams

- Belle Creek
- Little Cannon
- Spring Creek
- Wells Creek
- Hay Creek
- Bullard Creek
- Trout Brook



- Status of Water Quality in Goodhue Co.

Geometric Mean of E.coli Sampling efforts in Mississippi River/Lake Pepin Watershed 2012-2013 and 2018-2019
(25 sample rounds, 126 MPN/100mL Standard)



DNA Analysis - Inconclusive

- Other

Watershed Planning is now in Implementation Stages

- Zumbro and the Cannon River Watersheds
- Focus on Surface Water Runoff and Groundwater Quality
- Utilizing State Funds to Address the Plan(s) Priorities





Examples of other programs & initiatives that the citizens of Goodhue County utilize because of County support!
Thank you again

Comments / Questions

