



# Goodhue County

## Minnesota

COMMITTEE OF THE WHOLE AGENDA

COUNTY BOARD ROOM  
GOVERNMENT CENTER  
RED WING, MN

MAY 16, 2023  
9:45 A.M.

Join on your computer, mobile app or room device

[Click here to join the meeting](#)

Meeting ID: 266 673 214 074  
Passcode: wknxqK

OR CALL IN  
[+1 872-240-8960,,925976225#](#)

PHONE CONFERENCE ID: 925 976 225#

Government Center Master Plan

Documents:

[Govt Center Master Plan 05.2023.pdf](#)



**Scott O. Arneson**  
County Administrator  
Goodhue County

509 W. Fifth St.  
Red Wing, MN 55066  
Office (651) 385.3001

Date: May 11, 2023

To: Goodhue County Board of Commissioners

From: Scott O. Arneson, County Administrator

RE: Government Center Master Plan

The Board of Commissioners approved the Government Center Space Study in 2021. This Committee of the Whole presentation and conversation is a continuation of previous discussions with additional information and renderings provided.

Von Peterson and the team from TSP will be at the meeting to walk us through the updated phases of the master plan and review the drawings and renderings.

For your reference below are the links to the previous meeting packets where this information was reviewed and discussed.

Personnel Committee Report      [02.21.2023 County Board Report](#)

Closed Session                      01.17.2023 – Building Security

Committee of the Whole Packet    [10.4.2022 Committee of the Whole](#)

Committee of the Whole Packet    [07.19.2022 Committee of the Whole](#)

Closed Session                      04.19.2022 – Building Security Assessment Review from the  
Dept. of Homeland Security.

As discussed at the February 2023 Board meeting with the approval of hiring a Veterans Service Office Administrative Assistant, and to meet the goal of providing the best possible service to the citizens entering the building, our intent would be to move forward with implementing phase one of the overall master plan. We have reached out to Red Wing Construction for a cost estimate to make modifications to the lower level.

## **GOODHUE COUNTY BOARD OF COMMISSIONERS**

LINDA FLANDERS  
1<sup>st</sup> District  
1121 W 4<sup>th</sup> St.  
Red Wing, MN 55066

BRAD ANDERSON  
2<sup>nd</sup> District  
10679 375<sup>TH</sup> St. Way  
Cannon Falls, MN 55009

TODD GRESETH  
3<sup>rd</sup> District  
46804 Hwy 57 Blvd  
Wanamingo, MN 55992

JASON MAJERUS  
4<sup>th</sup> District  
39111 Co. 2 Blvd  
Goodhue, MN 55027

SUSAN BETCHER  
5<sup>th</sup> District  
30133 Lakeview Ave.  
Red Wing, MN 55066

*An Equal Opportunity Employer*

# LOWER LEVEL - EXISTING DEPARTMENT PLAN



- BUILDING SUPPORT
- CIRCULATION
- I.T.
- MECH/ELEC
- MULTI-PURPOSE
- STAFF
- VEHICLE SERVICES

LOWER LEVEL - DEPARTMENT - EXISTING  
SCALE: 1/8" = 1'-0"

# FIRST LEVEL - EXISTING DEPARTMENT PLAN

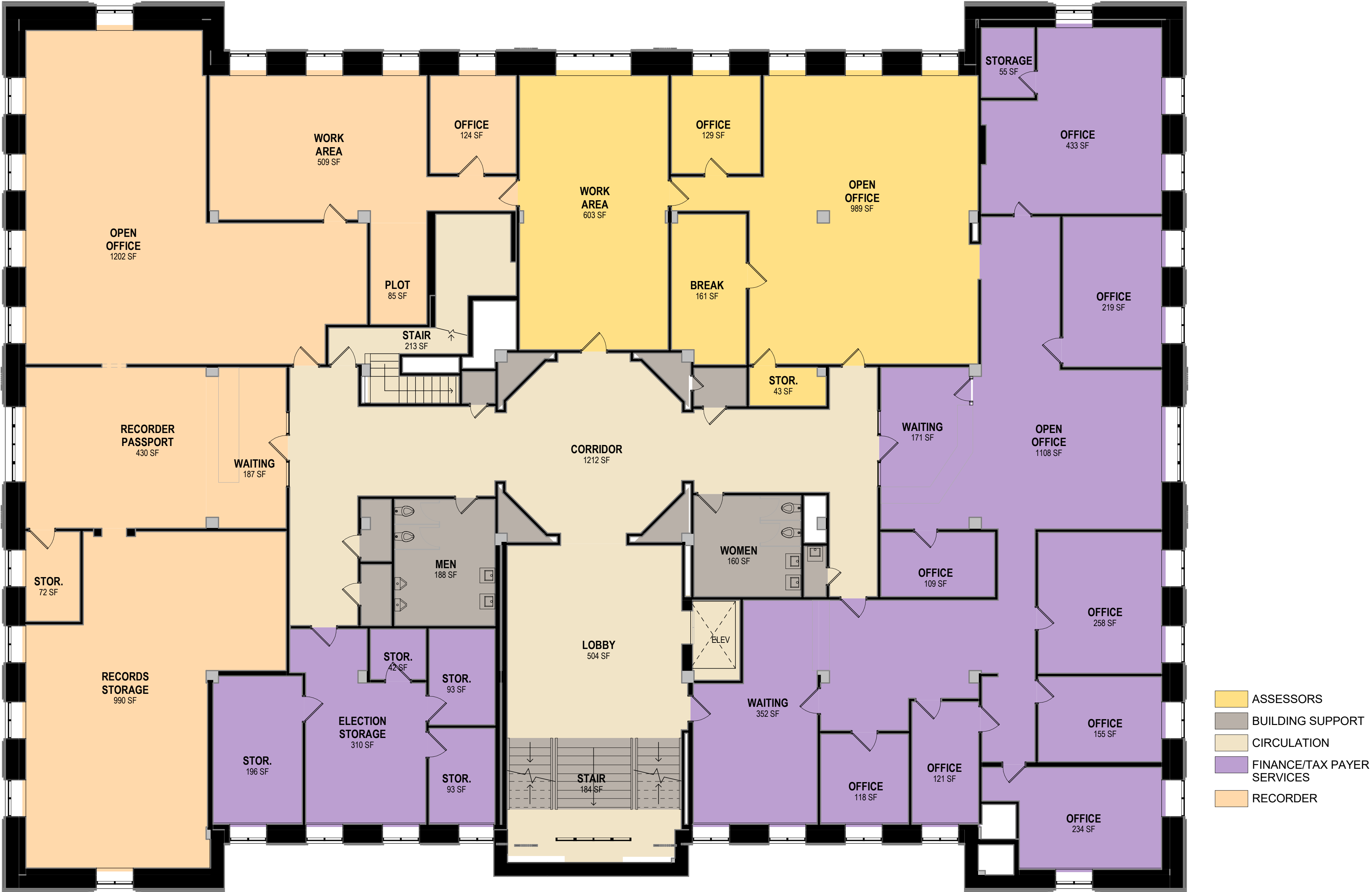


FIRST LEVEL - DEPARTMENT - EXISTING  
SCALE: 1/8" = 1'-0"

## GOODHUE COUNTY GOVERNMENT BUILDING PROGRAMMING

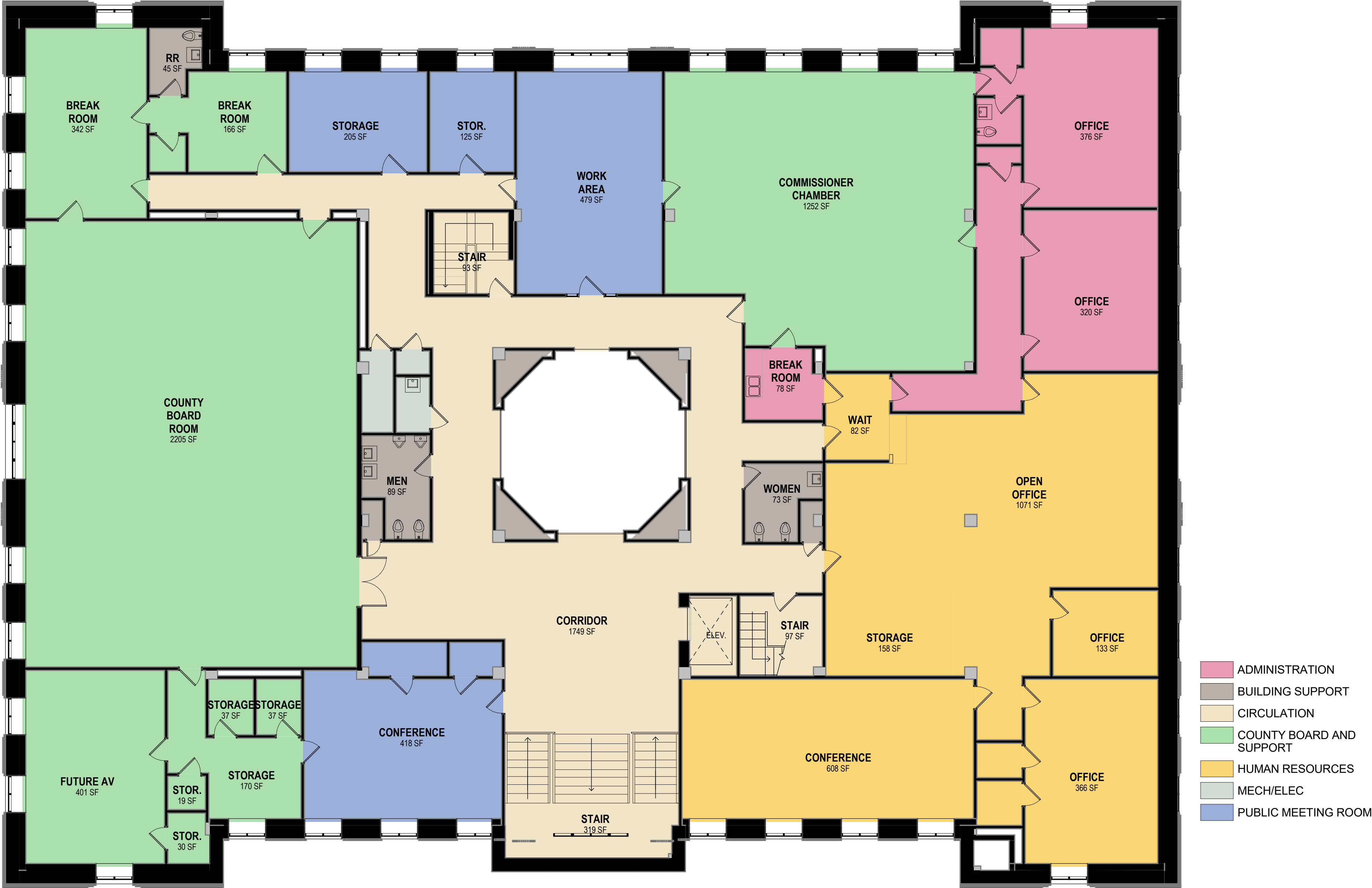


# SECOND LEVEL - EXISTING DEPARTMENT PLAN



SECOND LEVEL - DEPARTMENT - EXISTING  
SCALE: 1/8" = 1'-0"

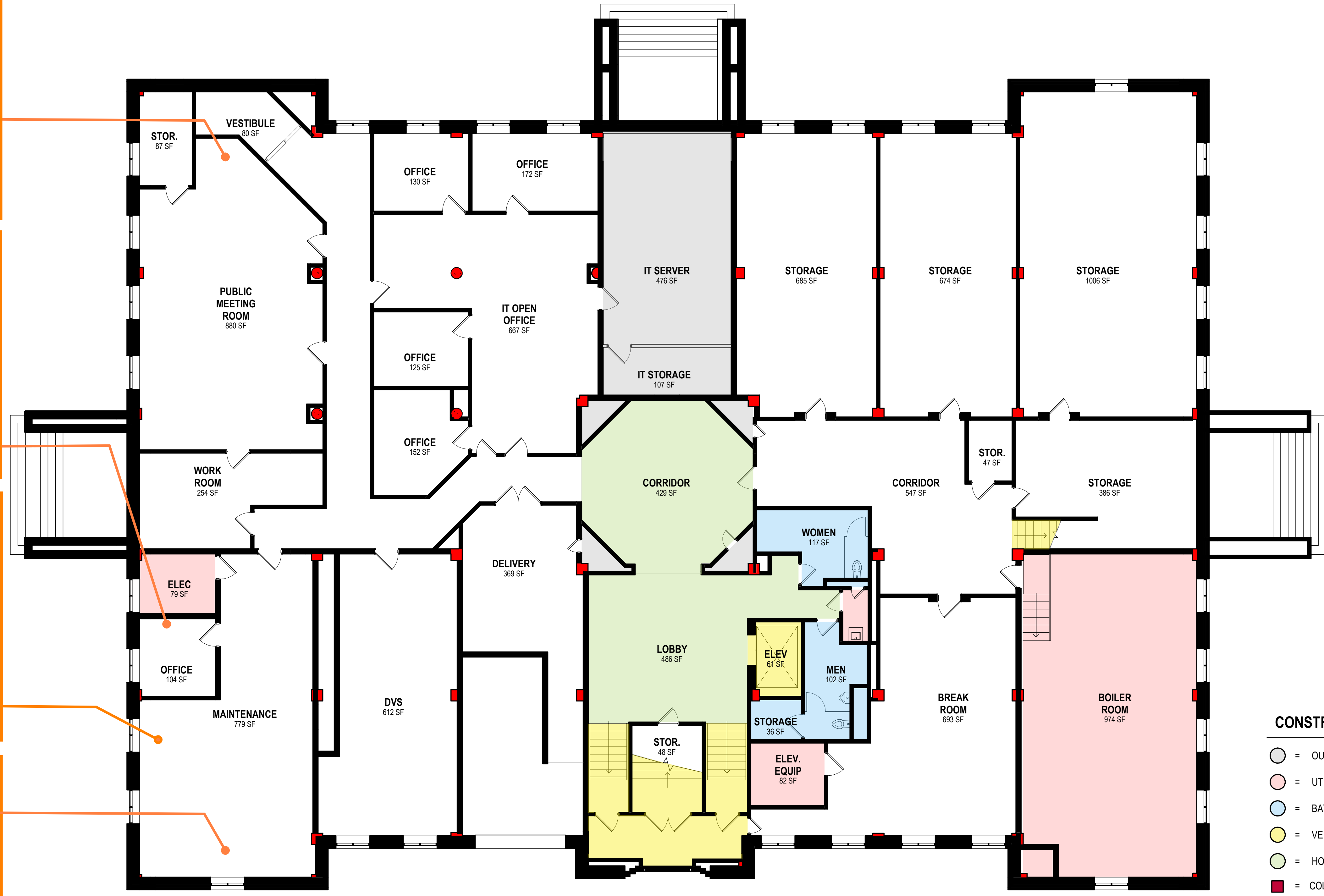
# THIRD LEVEL - EXISTING DEPARTMENT PLAN



THIRD LEVEL - DEPARTMENT - EXISTING  
SCALE: 1/8" = 1'-0"



# LOWER LEVEL - CONSTRAINTS - EXISTING



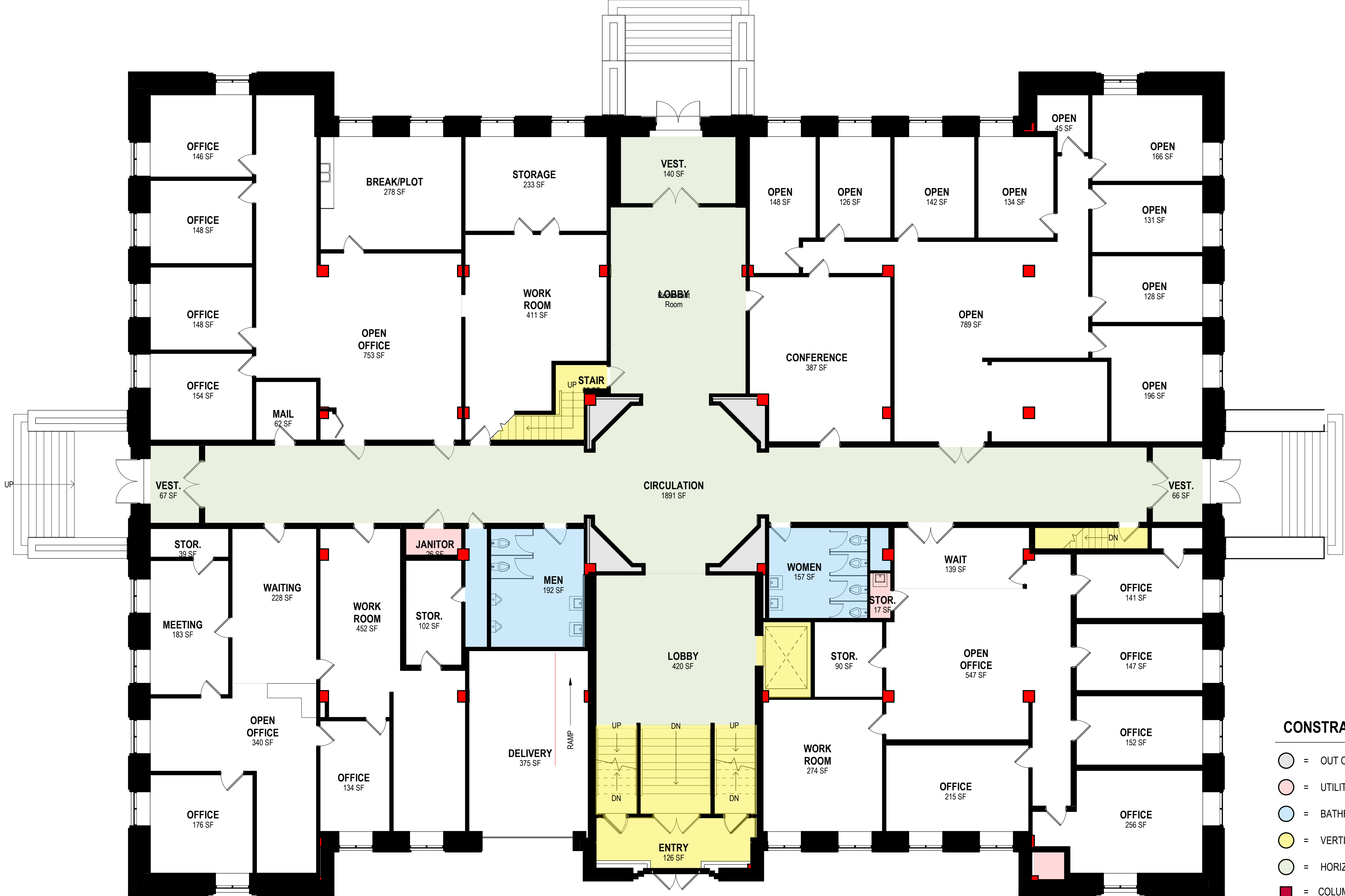
- CONSTRAINTS**
- = OUT OF SCOPE
  - = UTILITY/MECHANICAL
  - = BATHROOMS
  - = VERTICAL CIRCULATION
  - = HORIZONTAL CIRCULATION
  - = COLUMN LOCATION

LOWER LEVEL - CONSTRAINTS - EXISTING  
SCALE: 1/8" = 1'-0"

## GOODHUE COUNTY GOVERNMENT BUILDING PROGRAMMING



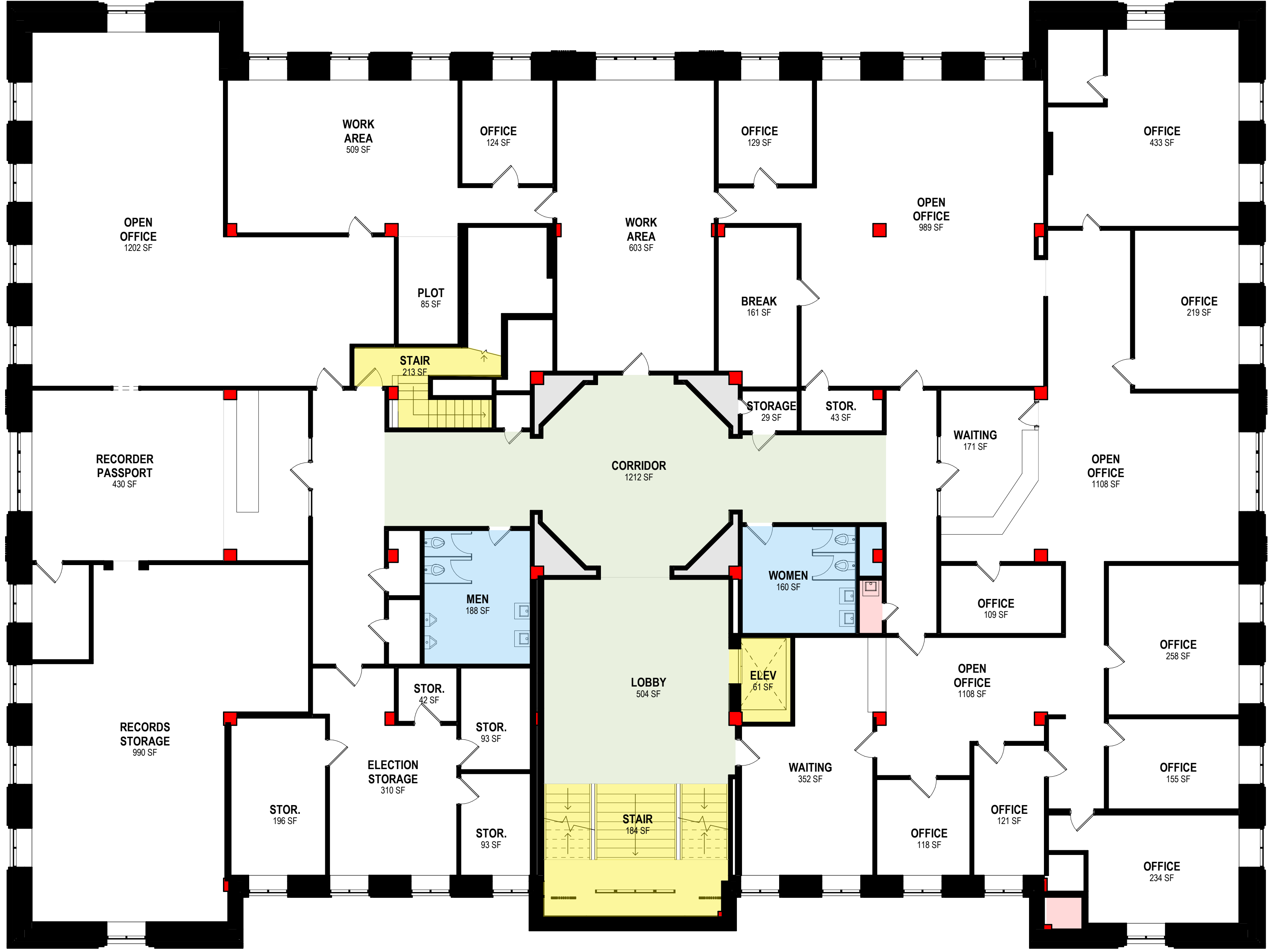
# FIRST LEVEL - CONSTRAINTS - EXISTING



- CONSTRAINTS**
- = OUT OF SCOPE
  - = UTILITY/MECHANICAL
  - = BATHROOMS
  - = VERTICAL CIRCULATION
  - = HORIZONTAL CIRCULATION
  - = COLUMN LOCATION

FIRST LEVEL - CONSTRAINTS - EXISTING  
SCALE: 1/8" = 1'-0"

# SECOND LEVEL - CONSTRAINTS - EXISTING

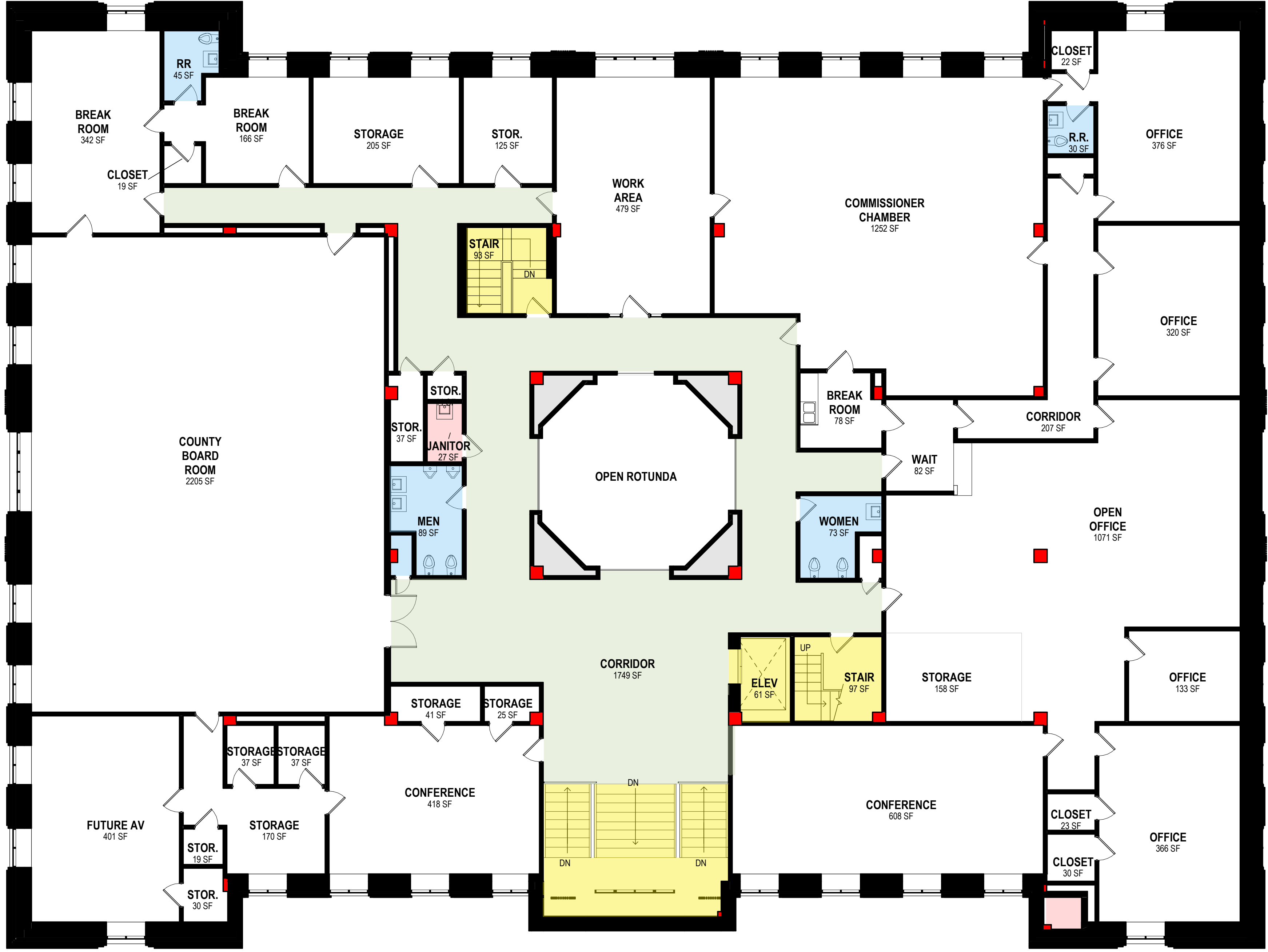


**CONSTRAINTS**

- = OUT OF SCOPE
- = UTILITY/MECHANICAL
- = BATHROOMS
- = VERTICAL CIRCULATION
- = HORIZONTAL CIRCULATION
- = COLUMN LOCATION

SECOND LEVEL - CONSTRAINTS - EXISTING  
SCALE: 1/8" = 1'-0"

# THIRD LEVEL - CONSTRAINTS - EXISTING



**CONSTRAINTS**

- = OUT OF SCOPE
- = UTILITY/MECHANICAL
- = BATHROOMS
- = VERTICAL CIRCULATION
- = HORIZONTAL CIRCULATION
- = COLUMN LOCATION

THIRD LEVEL - CONSTRAINTS - EXISTING  
SCALE: 1/8" = 1'-0"

# LOWER LEVEL FLOOR PLAN - PHASE 01



LOWER LEVEL - DEPARTMENT - PHASE 01  
SCALE: 1/8" = 1'-0"



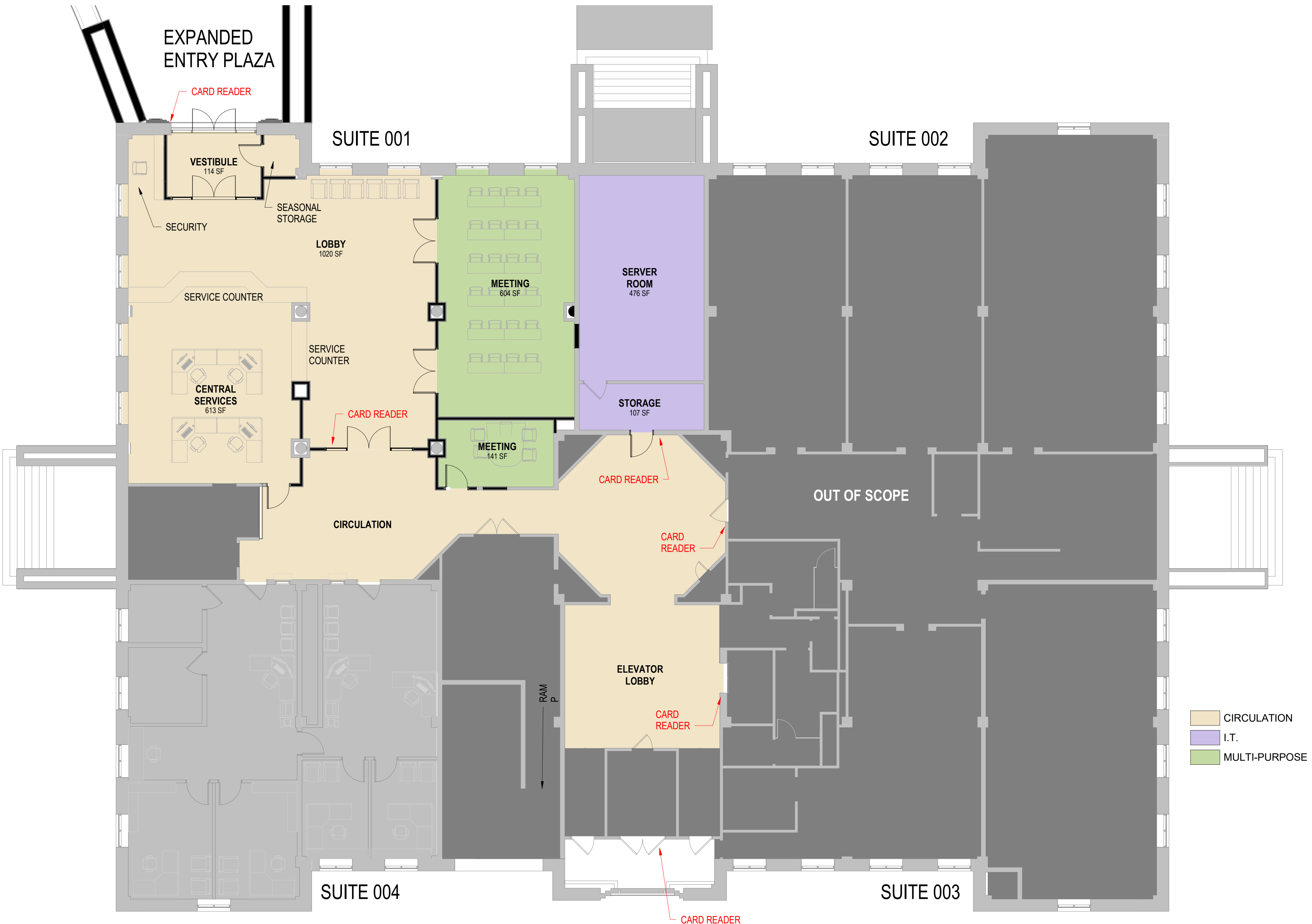
# FIRST LEVEL FLOOR PLAN - PHASE 01



- FACILITIES
- I.T.
- LAND USE MANAGEMENT

FIRST LEVEL - DEPARTMENT - PHASE 01  
SCALE: 1/8" = 1'-0"

# LOWER LEVEL FLOOR PLAN - PHASE 02



LOWER LEVEL - DEPARTMENT - PHASE 02  
SCALE: 1/8" = 1'-0"

# FIRST LEVEL FLOOR PLAN - PHASE 03



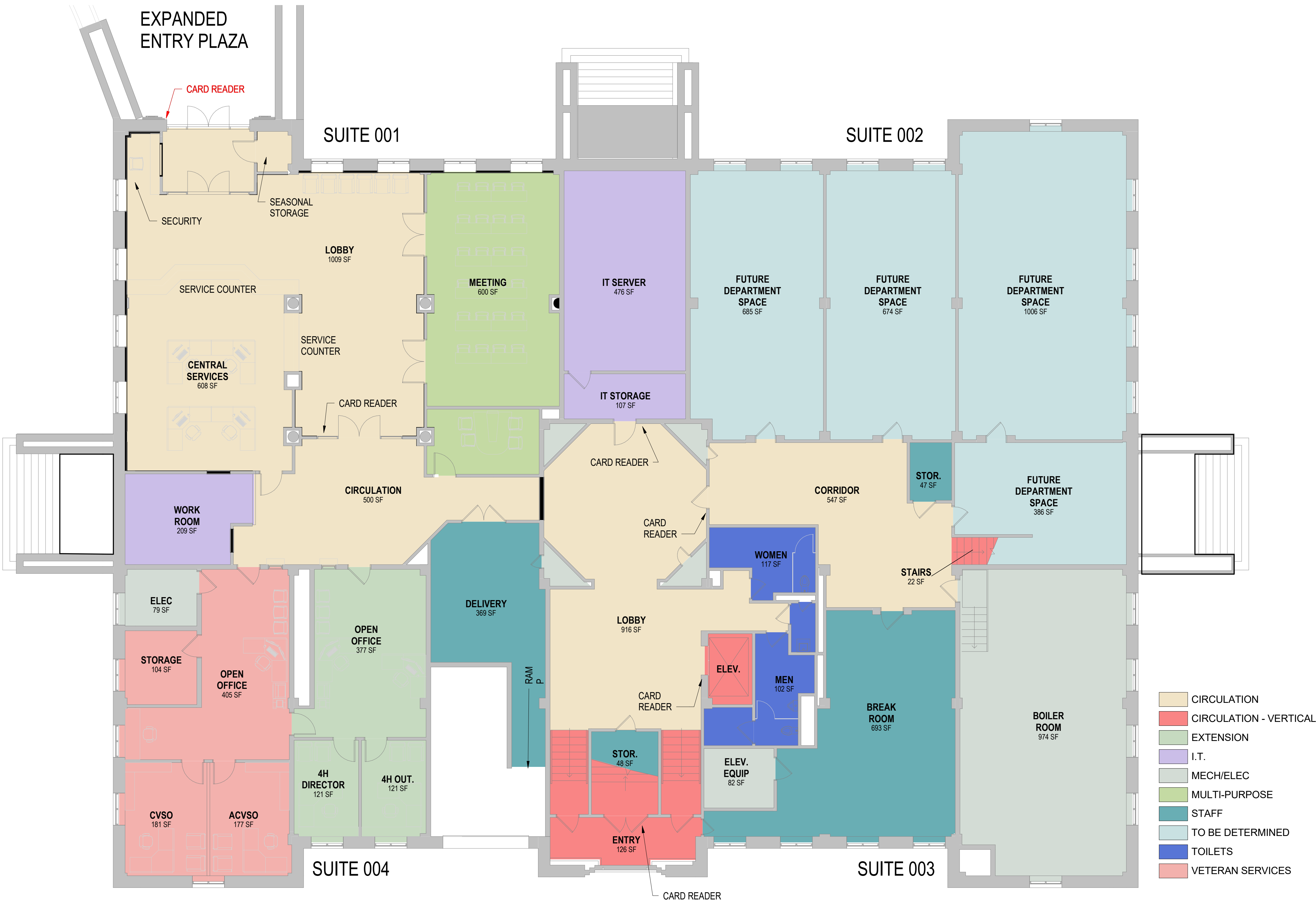
FIRST LEVEL - DEPARTMENT - PHASE 03  
SCALE: 1/8" = 1'-0"

# THIRD LEVEL FLOOR PLAN - PHASE 03



THIRD LEVEL - DEPARTMENT - PHASE 03  
SCALE: 1/8" = 1'-0"

# LOWER LEVEL FLOOR PLAN - PHASING COMPLETE



LOWER LEVEL - DEPARTMENT - COMPLETE  
SCALE: 1/8" = 1'-0"

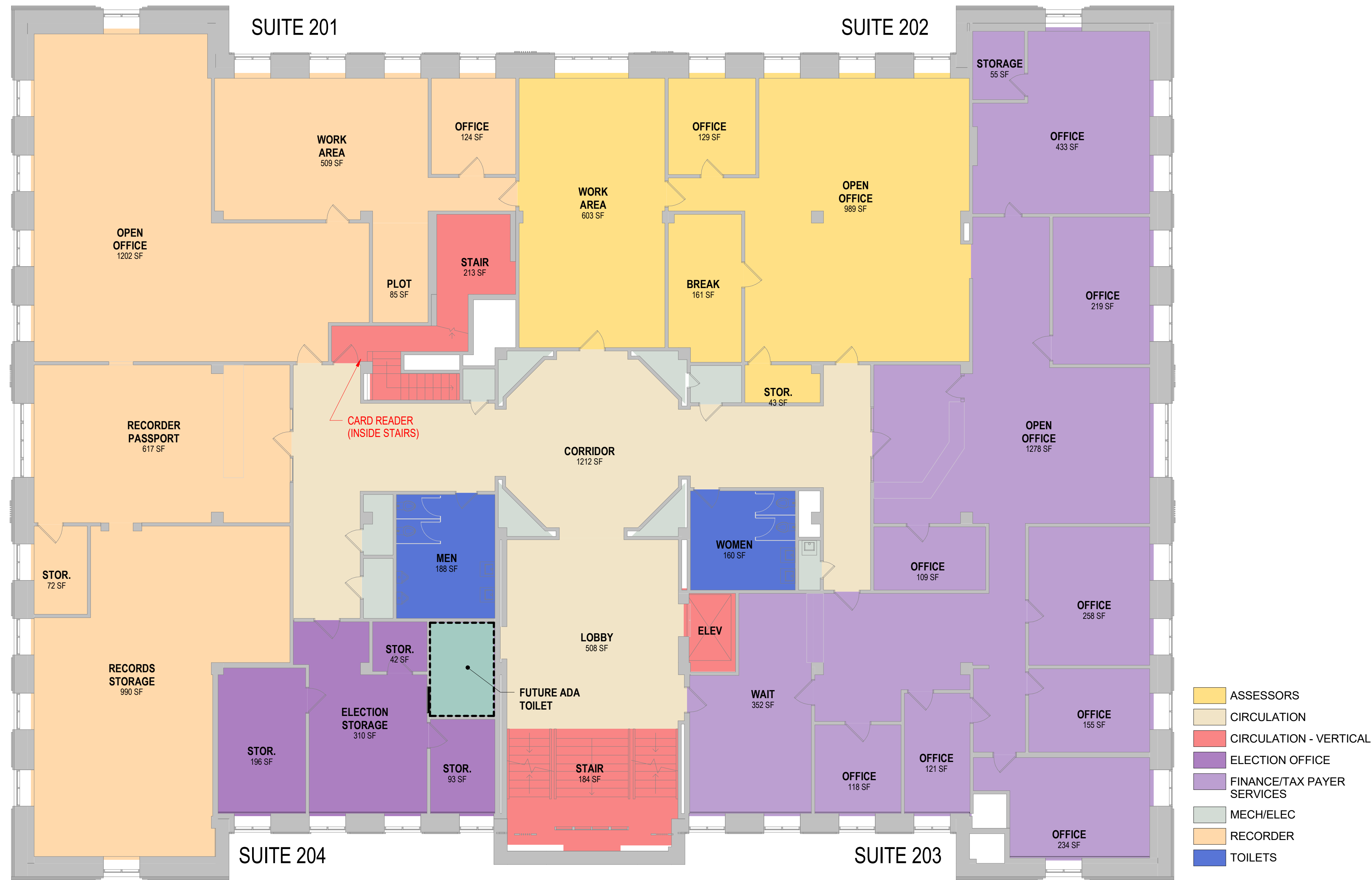


# FIRST LEVEL FLOOR PLAN - PHASING COMPLETE



FIRST LEVEL - DEPARTMENT - COMPLETE  
SCALE: 1/8" = 1'-0"

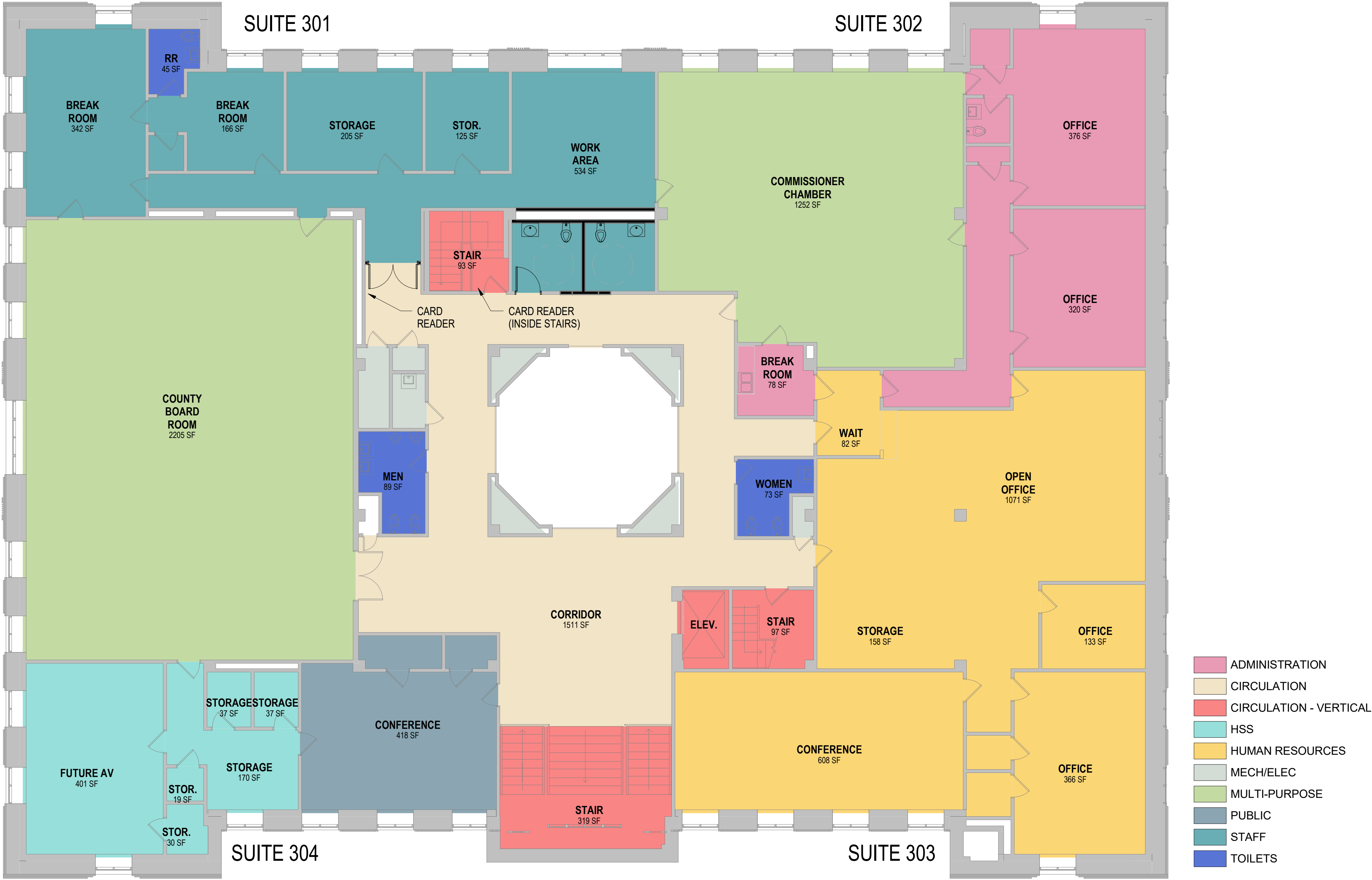
# SECOND LEVEL FLOOR PLAN - PHASING COMPLETE



SECOND LEVEL - DEPARTMENT - COMPLETE  
SCALE: 1/8" = 1'-0"



# THIRD LEVEL FLOOR PLAN - PHASING COMPLETE



THIRD LEVEL - DEPARTMENT - COMPLETE  
SCALE: 1/8" = 1'-0"



# SITE PLAN



DRAWING INSPIRATION FROM THE SURROUNDING GREEN SPACES AND THE CLOSE PROXIMITY TO THE MISSISSIPPI RIVER, WE SOUGHT TO CREATE A PLAZA THAT WAS RESPECTFUL FOR THE BEAUTY AND ELEGANCE OF THE ARCHITECTURE WHILE PROVIDING A COMFORTING AND INVITING ENTRY INTO THE GOVERNMENT BUILDING.

## GOODHUE COUNTY GOVERNMENT BUILDING PROGRAMMING





# SITE PLAN

ORNAMENTAL SHADE TREE WITH GARDEN BED

EXISTING SIGNAGE TO BE REINSTALLED.

BUILT-IN BENCHES

PLANTERS

BOLLARDS

PAVER PLAZA

RETAINING WALL.

OVERHANG (GLASS & METAL)

WEST AVE

W 5TH ST

RECESSED ALCOVE WITH PLACARD OR SIGNAGE

FLAG POLE AND GARDEN BED TO REMAIN.

REVISED ENTRY

EAST AVE

GOODHUE COUNTY GOVERNMENT CENTER

## GOODHUE COUNTY GOVERNMENT BUILDING PROGRAMMING

0' 25' 50' 100'



Architecture  
Engineering  
Planning



3D EXTERIOR PERSPECTIVE



TSP

GOODHUE COUNTY  
GOVERNMENT BUILDING PROGRAMMING

TSP  
Architecture  
Engineering  
Planning



3D EXTERIOR PERSPECTIVE



GOODHUE COUNTY  
GOVERNMENT BUILDING PROGRAMMING





3D EXTERIOR PERSPECTIVE



GOODHUE COUNTY  
GOVERNMENT BUILDING PROGRAMMING





3D EXTERIOR PERSPECTIVE



GOODHUE COUNTY  
GOVERNMENT BUILDING PROGRAMMING





3D EXTERIOR PERSPECTIVE



TSP

GOODHUE COUNTY  
GOVERNMENT BUILDING PROGRAMMING

TSP  
Architecture  
Engineering  
Planning



# 3D INTERIOR PERSPECTIVE



GOODHUE COUNTY  
GOVERNMENT BUILDING PROGRAMMING



3D INTERIOR PERSPECTIVE



GOODHUE COUNTY  
GOVERNMENT BUILDING PROGRAMMING





3D INTERIOR PERSPECTIVE



GOODHUE COUNTY  
GOVERNMENT BUILDING PROGRAMMING



3D INTERIOR PERSPECTIVE



GOODHUE COUNTY  
GOVERNMENT BUILDING PROGRAMMING

