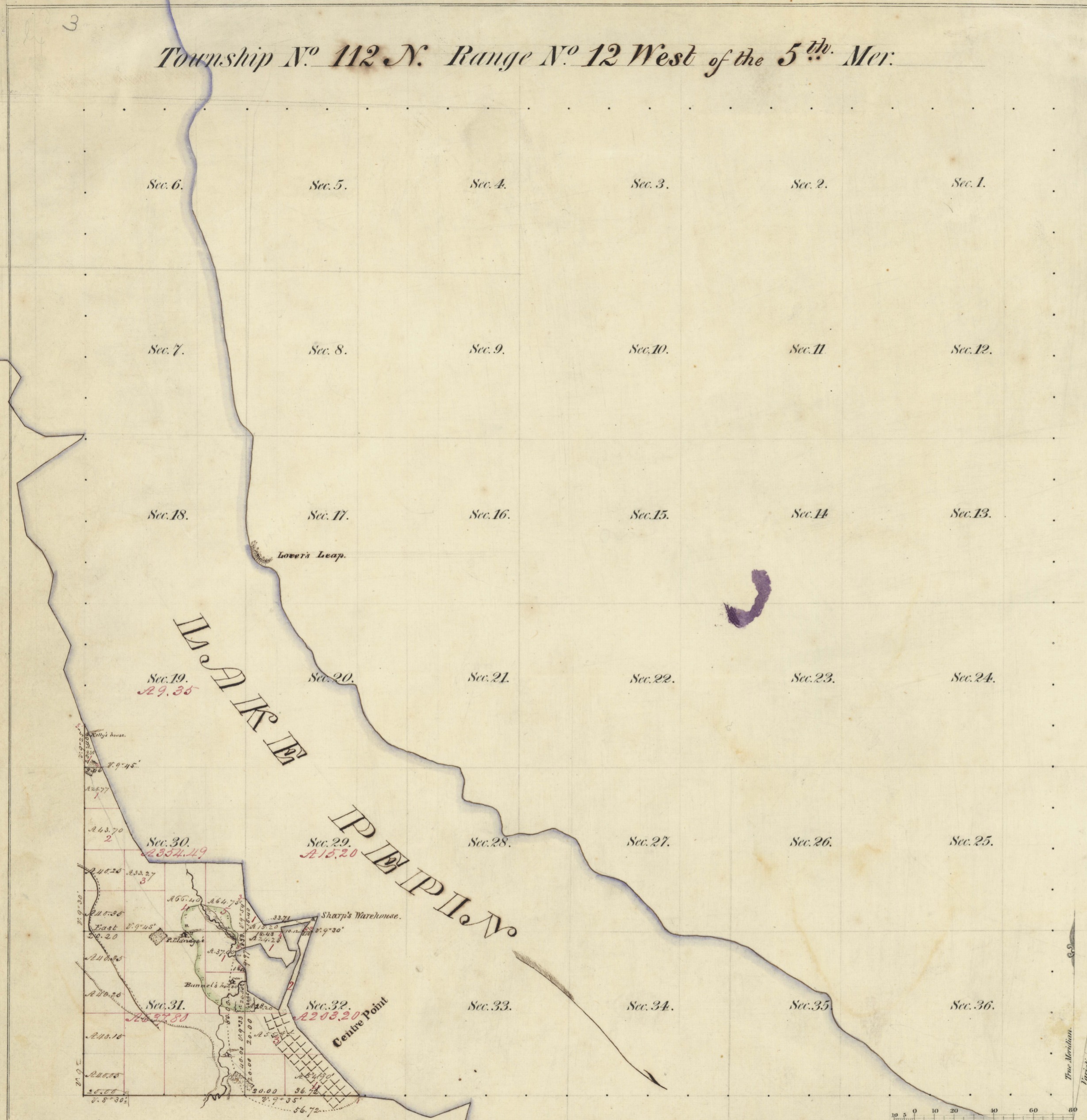


Township N<sup>o</sup> 112 N. Range N<sup>o</sup> 12 West of the 5<sup>th</sup> Mer.



Meanders of Lakes								
Posts	Courses	Ch <sup>s</sup> Lk <sup>s</sup>	Posts	Courses	Ch <sup>s</sup> Lk <sup>s</sup>	Posts	Courses	Ch <sup>s</sup> Lk <sup>s</sup>
<b>Lake Pepin</b>								
1	N. 43 1/2° E	16.50						
	S. 30° W	11.50						
2	S. 19° E	6.35.30						
	S. 19° E	6.75						
	S. 37° W	24.75						
3	N. 35° W	15.40						
	N. 37° W	8.00						
	S. 67° W	9.90						
	S. 19 3/4° W	44.50						
	N. 35° W	15.10						
4	S. 23 3/4° W	35.90						
	S. 19 3/4° W	17.00						
5	S. 27 1/4° W	5.20						
<b>Lake in Sections</b>								
29. 37. & 32.								
6	S. 22 1/4° W	6.40						
	S. 5 1/2° E	5.90						
	S. 19 3/4° W	28.20						
	S. 24 3/4° W	19.70						
7	S. 7 3/4° W	8.70						
	S. 45° W	6.00						
	North	3.50						
8	S. 66° E	4.80						
	S. 71 3/4° E	8.00						
	S. 37° E	8.10						
	S. 13 3/4° E	5.30						
	S. 36 1/2° E	4.20						
	S. 52 3/4° E	4.50						
	S. 12 3/4° E	6.00						
	S. 87° W	3.90						
9	S. 17 3/4° W	9.30						
	S. 67° W	1.90						
	S. 79 1/2° E	14.50						
6	S. 41° W	6.00						
Mls. Chs. Lks.								
Total 5. 38. 20								

Total number of Acres 1220.04

Surveys Designated.	By Whom Surveyed	Date of Contract.	Amount of Surveys M. Ch <sup>s</sup> Lk <sup>s</sup>	When Surveyed.	When Changed in the Sur. Gen <sup>l</sup> Acc <sup>t</sup>
Township lines.	Thomas Selman	May 15 <sup>th</sup> 1855.	3. 77. 12	July, 1855	
Subdivisions.	Thomas Selman	July 13 <sup>th</sup> 1855.	7. 75. 88	Oct. 1855 & Jan. 1856.	

The above Map of Township N<sup>o</sup> 112 North of Range N<sup>o</sup> 12 West, 5<sup>th</sup> Principal Meridian Minnesota, is strictly conformable to the field notes of the survey thereof on file in this Office which have been examined and approved.

Surveyor General's Office  
Dubuque, March 12<sup>th</sup> 1856

Thomas Selman  
Sur. Gen.