



# GOODHUE COUNTY MINNESOTA

TO EFFECTIVELY PROMOTE THE SAFETY, HEALTH, AND WELL-BEING OF OUR RESIDENTS

## PARK BOARD AGENDA

GOODHUE COUNTY PUBLIC WORKS  
2140 PIONEER ROAD, RED WING, MN

MAY 11, 2021  
1:00 PM

### VIRTUAL MEETING NOTICE.

Due to concerns surrounding the spread of COVID-19, it has been determined that in-person meetings are not practical or prudent. Therefore, Park Board meetings will temporarily be conducted by telephone or other electronic means.

The Goodhue County Parks, Trails, and Recreation Advisory Board will be conducting a meeting on May 11, 2021 at 1:00 p.m. in the Public Works Department. The Public Works Director or Administrative Assistant will be present at the meeting location. All Park Board members attending may appear by telephone or other electronic means. The public may monitor the meeting from a remote site by logging into [HTTPS://GLOBAL.GOTOMEETING.COM/JOIN/774942829](https://global.gotomeeting.com/join/774942829) or calling 1-877-309-2073 OR 1-646-749-3129 any time during the meeting. Access Code: 774-942-829

### CALL MEETING TO ORDER.

### REVIEW AND APPROVE MINUTES FROM PREVIOUS MEETING.

Documents:

[02-09-21 PB MINUTES DRAFT.PDF](#)

### APPROVE THE AGENDA.

### BYLLESBY PARK ORDINANCE CHANGES.

Documents:

[BYLLESBY PARK ORDINANCE CHANGES.PDF](#)

### CASCADE KAYAK LAUNCH.

Documents:

[CASCADE CANOE-KAYAK LAUNCH.PDF](#)

### AVIS REMOVAL & INSPECTION LANE.

Documents:

[AVIS LANE LOCATION.PDF](#)

### PARK MESSAGE BOARD.

Documents:

[BYLLESBY PARK MESSAGE BOARD.PDF](#)

DONATIONS IN HONOR OF RICHARD SAMUELSON.

CLIFFS UPDATE.

BYLLESBY PARK PAVILION PROJECT UPDATE.

PRAIRIE RESTORATION UPDATE.

FOR YOUR INFORMATION.

**.1. Cannon Valley Trail Update.**

Documents:

[CANNON VALLEY TRAIL UPDATE.PDF](#)

**.2. Goodhue Pioneer State Trail Update.**

Documents:

[GOODHUE PIONEER STATE TRAIL UPDATE.PDF](#)

NEXT MEETING DATE.

ADJOURN.

The minutes will be presented for approval at the next Park Board meeting.

## Goodhue County Parks, Trails and Recreation Advisory Board

Meeting Date: February 9, 2021

Meeting Location: Goodhue County Public Works – Red Wing, MN  
(Virtual Meeting)

Meeting Time: 1:00 PM

### Members

Brad Anderson	Commissioner
Todd Greseth	Commissioner
Mike Melstad	1 <sup>st</sup> District Rep
Mairi Doerr	2 <sup>nd</sup> District Rep
Bernie Overby	3 <sup>rd</sup> District Rep
Barbara Pratt	4 <sup>th</sup> District Rep
Janie Farrar	5 <sup>th</sup> District Rep
Scott Roepke	Cannon Valley Trail Rep
Roxanne Bartsh	Goodhue Pioneer Trail Rep
Greg Isakson	Staff: Director of Public Works
Jennifer Ziemer	Staff: Admin Assistant- PW

Absent: Mairi Doerr, Mike Melstad, Barbara Pratt.

Guests: Ken Burns.

Janie Farrar called the meeting to order at 1:05 PM. It was moved by Commissioner Anderson, seconded by Bernie Overby, and carried to approve the September 9, 2020, Park Board Minutes.

It was moved by Commissioner Anderson, seconded by Scott Roepke, and carried to approve the consent agenda, which included approval of the purchase of Wave Armor boat slips for day use only from MN Dock & Lift.

It was moved by Commissioner Anderson, seconded by Commissioner Greseth, and carried to have Janie Farrar serve a second year as Park Board Chairperson and to have Bernie Overbie serve a second year as Vice-Chairperson.

Greg Isakson reviewed the design and construction process for the Byllesby Park Pavilion & Essential Services Project. It was moved by Janie Farrar, seconded by Scott Roepke, and carried to approve the design agreement with LOCUS Architecture, and recommend approval by the Goodhue County Board of Commissioners.

Jennifer Ziemer provided an update on the Nielsen Memorial Preserve (NMP) Master Plan Update and reviewed the Greater MN Regional Parks & Trails Commission (GMRPTC) regional designation application process. It was moved by Commissioner Anderson, seconded by Bernie Overby, and carried to recommend County Board approval of the NMP Master Plan changes and re-submission for GMRPTC regional designation.

The Park Board supported most of the potential Byllesby Park Ordinance changes. They were also supportive of matching operating hours to Dakota County's, with quiet hours in the early morning. Ken Burns suggested a time limit of one hour on the new boat slips. Staff agreed to work on further revisions and bring the draft ordinance back to the next Park Board meeting.

Greg Isakson discussed potential concerns regarding installation of an AIS watercraft inspection lane on the west side of the parking lot, and the difficulty it may cause with inspecting units coming into the boat launch. He suggested moving the AIS lane location to the south side of the parking lot. Commissioner Anderson proposed further review of the AIS lane location. Bernie Overby added that laws now require that fishermen dispose of unwanted bait in a trash receptacle

#### Mission Statement

*The mission of the Goodhue County Parks, Trails and Recreation Advisory Board is to provide a quality park, trail and recreation system which strive to preserve, protect, maintain, improve and enhance the County's park land, trails, and recreational activities, on behalf of all current and future citizens of the County of Goodhue*

before leaving the body of water, or drain the bait container and refill it with bottled or tap water. This may create an unpleasant odor if bait is disposed of in the AIS removal area, and this may need to be collected very frequently.

Jennifer Ziemer discussed prairie restoration plans at Byllesby Park, including preparation work in the summer of 2021 and dormant seeding in the fall of 2021. The Park Board agreed that communication and public awareness will be vital for this project, as large portions of the park will appear “dead” in 2021. It was moved by Commissioner Anderson, seconded by Commissioner Greseth, and carried to approve the prairie restoration project.

The Park Board discussed construction of a fish cleaning structure at Byllesby Park. There is some concern that with the installation of running water and sinks in 2022-2023, the bathrooms may turn into fish cleaning areas. The Park Board was supportive of the project, but did not prioritize it over the berm construction and buffer planting on the eastern part of Byllesby Park along Highway 19. Commissioner Anderson and Scott Roepke suggested reaching out to local organizations such as the Cannon Falls Sportsmen’s Club to help raise funds for this project.

The Park Board was supportive of having LOCUS Architecture develop ideas for a park entrance sign.

Greg Isakson discussed potential permitting needs with Stanton Township, as well as development of an agreement with Dakota County for servicing the modern restrooms and fish cleaning structure.

The Park Board was asked to consider ideas for a memorial in honor of Commissioner Samuelson for the next meeting.

Cannon Valley Trail and Goodhue Pioneer State Trail updates were provided as part of the agenda.

The next meeting date is to be determined.

The meeting was adjourned at 3:06 PM.

Respectfully submitted,  
Jennifer Ziemer  
Goodhue County Administrative Assistant

***Mission Statement***

*The mission of the Goodhue County Parks, Trails and Recreation Advisory Board is to provide a quality park, trail and recreation system which strive to preserve, protect, maintain, improve and enhance the County’s park land, trails, and recreational activities, on behalf of all current and future citizens of the County of Goodhue*



**Greg Isakson, P.E.**  
*Public Works Director/County Engineer*  
*Goodhue County Public Works Department*

2140 Pioneer Road  
Red Wing, MN 55066  
Office (651) 385-3025

TO: Goodhue County Parks, Trails, and Recreation Advisory Board

FROM: Greg Isakson, Public Works Director

RE: 11 May 21 Park Board Meeting  
**Byllesby Park Ordinance Changes**

Date: 06 May 21

### Summary

It is requested that the Park Board review proposed changes to the Byllesby Park Ordinance 80-1, and request County Board approval of the amended ordinance.

### Background

The current Byllesby Park ordinance was originally enacted in 1983, and later amended in 2004. Upcoming park improvements, coupled with increased park use due to the COVID-19 pandemic, have prompted a review of this ordinance.

The following ordinance revisions are proposed:

- Change the ordinance title to specify Byllesby Park, as Nielsen Memorial Preserve operates under a separate ordinance with different rules.
- The current ordinance has a closing time of 10:30 PM and no set opening time. This is due to people hunting and fishing that require boat landing access at very early hours in the morning. Stanton Township currently has operating hours of 6:00 AM – 10:00 PM specified for P-1 zoning in their zoning ordinance. Dakota County Lake Byllesby Regional Park has operating hours of 5:00 AM – 10:00 PM, with quiet hours from 5:00 AM – 8:00 AM. It is suggested that for ease of patrol, rentals, etc., Goodhue County Byllesby Park’s operating hours are changed to match Dakota County’s operating hours. This will also require permitting or a zoning ordinance amendment at the township level.
- Change the speed limit from 15 mph to 10 mph.
- Cleaning fish is currently not allowed in park buildings. If the Park Board wishes to proceed with the fish cleaning structure, this should be amended to “allowed in designated buildings only” or something similar. Terminology for this structure should be determined and used consistently in future park planning.
- Eliminate the last bullet point under rule #2. The 7<sup>th</sup> bullet point “To operate or park any motor vehicle within the boundaries of the park except upon designated roads or parking areas” already addressed keeping motorized vehicles off the grass and walking trails.
- New wording to clarify parking of vehicles with boat trailers vs. vehicles without boat trailers.

- New wording that addresses the addition of the loading/unloading zone, with a 10 minute maximum parking time.
- New wording that addresses the addition of the boat slips that will be installed at the end of May or early June. These are intended for day use only, no overnight dockage.
- Revised wording that addresses service animals.

Changes to this ordinance will require public notices, a public hearing, County Board approval, and recording of the amended ordinance. As mentioned above, additional permitting or zoning amendments will be required by Stanton Township as well.

#### Recommendations

It is the recommendation of staff that the Park Board determine any desired changes to the ordinance, and approve submission of the Ordinance 80-1 revisions to the County Board for their approval. Staff will also work with Stanton Township on changes required at a township level, along with other project permitting requests.

GOODHUE COUNTY **BYLLESBY** PARK RULES

ORDINANCE 80-1 **DRAFT REVISIONS 2021**

1. The park shall be open to the public from 5:00 a.m. until 10:00 p.m., except as otherwise posted, and during emergencies. Park quiet hours are from 5:00 a.m. to 8:00 a.m. No overnight camping allowed.
2. The following activities are **prohibited** in the park:
  - To engage in any brawling or fighting, or to engage in offensive, obscene, abusive, boisterous or noisy conduct or to engage in offensive, obscene, or abusive language tending reasonably to arouse alarm, anger, or resentment in others.
  - To display or to have in one's possession glass bottle containers.
  - To use or have in one's possession alcoholic beverages in containers larger than two liters.
  - To be in possession of or under the influence of any drug which is in violation of federal or state law.
  - To burn or otherwise dispose of garbage, refuse, or trash of any kind except to dispose of the same in receptacles provided for that purpose. Only garbage, refuse, or trash generated at the park is allowed to be disposed of in the receptacles provided.
  - To dispose of cut grass, tree trimmings, or personnel property on the park grounds.
  - To operate or park any motor vehicle within the boundaries of the park except upon designated roads or parking areas.
  - To operate any vehicle in a reckless manner or at a speed in excess of the posted speed limit. **(10 mph)**
  - To cut, damage, or remove trees, shrubs, plants, and other vegetation.
  - To hunt or disturb wildlife.
  - To deface, damage, or remove any park property.
  - To wash dishes in park buildings.
  - To clean fish in park buildings, **other than a designated fish cleaning area.**
  - To discharge wastewater or sewage onto park property.
  - To use, point, discharge or display uncased firearms or other dangerous weapons including explosives, air guns, slingshots, traps, seines, nets, bows, and arrows.
  - To place picnic tables in the lake.
  - ~~Possession and/or operation of off highway motorcycles and all terrain vehicles in the park.~~
    - ~~Off highway motorcycle means a motorized, off highway vehicle traveling on two wheels and having a seat or saddle designed to be straddled by the operator and handlebars for steering control.~~
    - ~~All terrain vehicle means a motorized flotation tired vehicle of not less than three low pressure tires, but not more than six tires, that is limited in engine displacement of less than 800 cubic centimeters and total dry weight less than 800 pounds.~~
    - ~~Except that, off highway motorcycles and all terrain vehicles are permitted to be in the park if secured for transportation on a permitted vehicle and not off loaded.~~
3. Vehicles with boat trailers must park in the boat trailer parking lot. Vehicles without trailers must park in the non-boat trailer parking lot. Units parked in the incorrect area will be cited and towed at the vehicle owner's expense.
4. The loading/unloading zone has a maximum parking time limit of 10 minutes. Vehicles in violation of this ordinance will be cited and towed at the vehicle owner's expense.
5. The boat slips have a maximum docking time of 1 hour. Watercraft in violation of this ordinance will be cited at the watercraft owner's expense. All watercraft must be removed from the slips before the park closes at 10:00 p.m. No overnight dockage of watercraft.

6. Pets are permitted in county parks. **Except for Certified Service Animals, no person shall allow any dog, cat, or other pet animal to enter buildings or designated swimming areas. ~~;~~ No person shall** permit any dog, cat, or other pet animal to be out of control. Such animal shall be attended and effectively controlled, and shall not run at large. All droppings must be picked up and disposed of. Pets shall not deprive or disrupt the enjoyment or use of the park by others.
7. Horses are restricted to the roadways and designated parking areas. All droppings must be picked up and removed.
8. Fires are allowed in grills only. Open campfires are prohibited.
9. Any person who violates the above rules will be asked to conform to those rules or immediately leave the park, said person may be prosecuted to the full extent allowed by the law.
10. Any person who violates this ordinance is guilty of a misdemeanor, and subject to immediate removal from such park.

The park belongs to you. Please treat it with respect and help us to protect it by following the rules.



## Goodhue County Park Rules

### ORDINANCE 80-1

As Amended

**(CURRENT ORDINANCE)**

1. The park closes at 10:30 p.m., no overnight camping allowed.
  
2. The following activities are **prohibited** in the park:
  - To engage in any brawling or fighting, or to engage in offensive, obscene, abusive, boisterous or noisy conduct or to engage in offensive, obscene, or abusive language tending reasonably to arouse alarm, anger or resentment in others.
  - To display or to have in one's possession glass bottle containers.
  - To use or have in one's possession alcoholic beverages in containers larger than two liters.
  - To be in possession of or under the influence of any drug which is in violation of federal or state law.
  - To burn or otherwise dispose of garbage, refuse, or trash of any kind except to dispose of the same in receptacles provided for that purpose. Only garbage, refuse or trash generated at the park is allowed to be disposed of in the receptacles provided.
  - To dispose of cut grass, tree trimmings or personnel property on the park grounds.
  - To operate or park any motor vehicle within the boundaries of the park except upon designated roads or parking areas.
  - To operate any vehicle in a reckless manner or at a speed in excess of the posted speed limit. (15 mph)
  - To cut, damage, or remove trees, shrubs, plants, and other vegetation.
  - To hunt or disturb wildlife.
  - To deface, damage or remove any park property.
  - To clean fish or wash dishes in park buildings.
  - To discharge wastewater or sewage onto park property.
  - To use, point, discharge or display uncased firearms or other dangerous weapons including explosives, air guns, slingshots, traps, seines, nets, bows and arrows.
  - To place picnic tables in the lake.

- Possession and/or operation of off highway motorcycles and all-terrain vehicles in the park.
  - Off-highway motorcycle means a motorized, off highway vehicle traveling on two wheels and having a seat or saddle designed to be straddled by the operator and handlebars for steering control.
  - All terrain vehicle means a motorized flotation tired vehicle of not less than three low pressure tires, but not more than six tires, that is limited in engine displacement of less than 800 cubic centimeters and total dry weight less than 800 pounds.
  - Except that, off-highway motorcycles and all terrain vehicles are permitted to be in the park if secured for transportation on a permitted vehicle and not off loaded.

3 Pets are permitted in county parks. No person shall allow any dog, cat or other pet animal to enter buildings or designated swimming areas, or permit dog, cat or other pet animal to be out of control. Such animal shall be attended and effectively controlled, and shall not run at large. All droppings must be picked up and disposed of. Pets shall not deprive or disrupt the enjoyment or use of the park by others.

4 Horses are restricted to the roadways and designated parking areas. All droppings must be picked up and removed.

5 Fires are allowed in grills only. Open campfires are prohibited.

6. Any person who violates the above rules will be asked to conform to those rules or immediately leave the park, said person may be prosecuted to the full extent allowed by the law.

7. Any person who violates this ordinance is guilty of a misdemeanor, and subject to immediate removal from such park.

The park belongs to you. Please treat it with respect and help us to protect it by following the rules.



**Greg Isakson, P.E.**  
Public Works Director/County Engineer  
Goodhue County Public Works Department

2140 Pioneer Road  
Red Wing, MN 55066  
Office (651) 385-3025

TO: Goodhue County Parks, Trails, and Recreation Advisory Board

FROM: Greg Isakson, Public Works Director

RE: 11 May 21 Park Board Meeting  
**Cascade Canoe & Kayak Launch**

Date: 06 May 21

#### Summary

It is requested that the Park Board approve a final design for a canoe/kayak launch on County property in the Cascade area, and recommend project approval by the Goodhue County Board.

#### Background

Goodhue County has acquired a small acreage along the Cannon River off 4<sup>th</sup> Ave Way in the northwestern corner of Stanton Township. The Park Board visited the site and met with adjacent landowners on 08 Jul 20 to discuss potential parking and river access points.

A draft parking lot concept has been developed that allows for the following:

- Parking for 4 vehicles
- Turn-around area large enough for a large van with a canoe/kayak trailer, such as the Boy Scouts or Red Wing ELC would operate
- 12' wide access road off 4<sup>th</sup> Avenue Way
- Pullover areas for loading/unloading kayaks and gear
- Separate landing and launch sites
- Design that utilizes existing cleared path to minimize tree cutting
- Installation of additional trees or shrubs for screening where needed
- Portable toilet and trash receptacle
- Minimal maintenance disturbances, including weekly portable toilet service late spring through fall, twice weekly trash cleanup, and weekly or bi-weekly mowing of an approximately 3-4' wide area around the parking lot
- Addition of base material covered with river rock at the launch site, to a distance of 30' waterward of the OHWM. Additional material, if required, would require DNR/USACE permitting.

Project next steps:

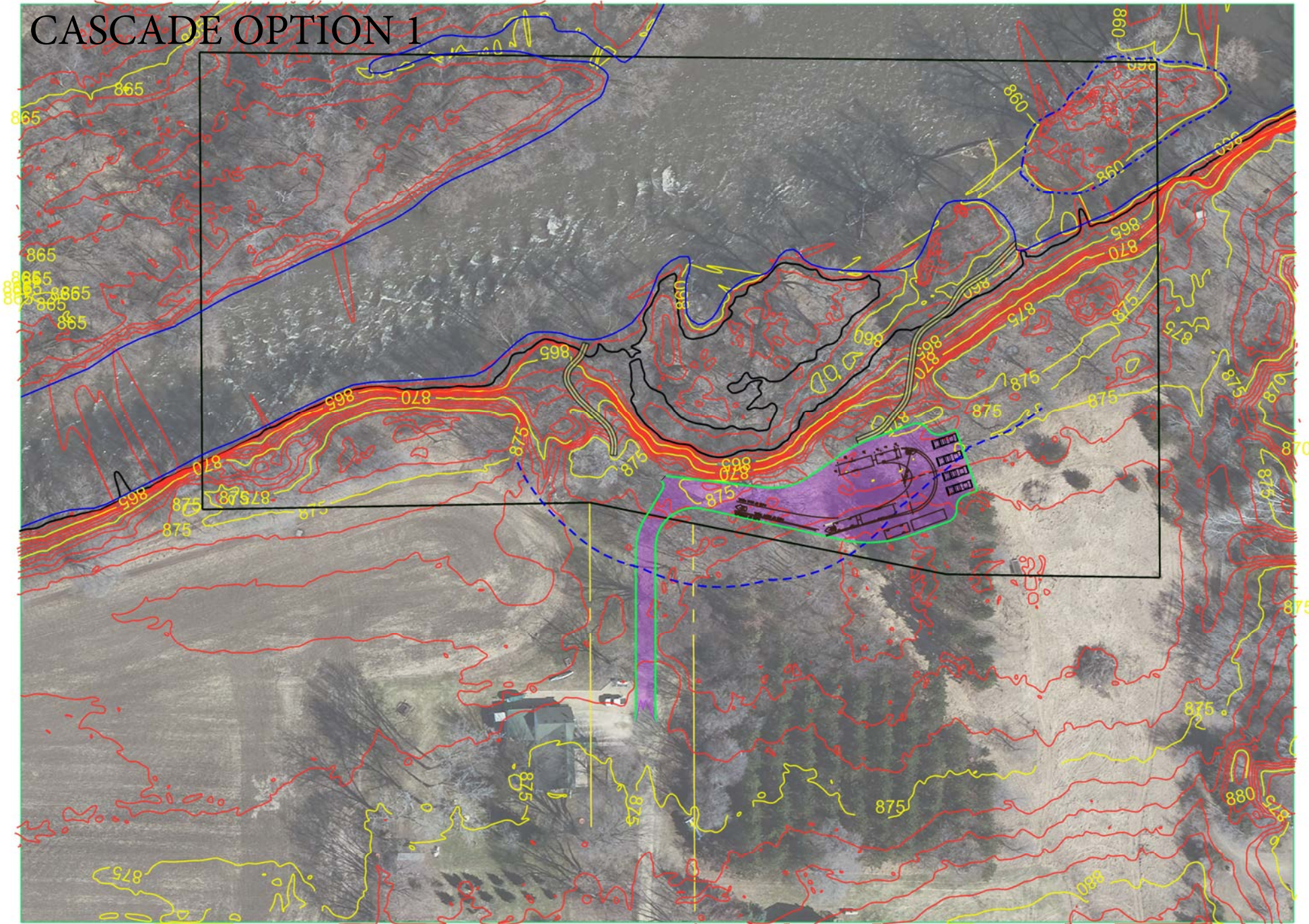
- Approve site plan design
- Submit site plan to Goodhue County Land Use Management

- Public hearing at the Goodhue County Planning Commission meeting on May 17<sup>th</sup> for rezoning of the property as Park Zone (necessary for site development)
- Potential public hearing at Goodhue County Board meeting on June 1<sup>st</sup> for rezoning of the property as Park Zone
- Potential discussion at Stanton Township Planning Commission meeting on June 8<sup>th</sup> regarding site plan, Conditional Use Permit (CUP) request, and Access Permit (AP) request
- Potential discussion at Stanton Town Board meeting on June 15<sup>th</sup> regarding site plan, CUP request, AP request, and setting a public hearing
- Potential discussion at Stanton Township Planning Commission meeting on July 13<sup>th</sup> regarding CUP special provisions
- Potential public hearing at Stanton Town Board meeting on July 20<sup>th</sup> for CUP approval
- County Land Use Permitting and County Land Alteration Permitting
- Surveying, staking, and construction of canoe/kayak launch and parking late summer or fall of 2021

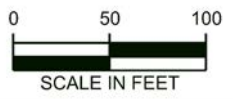
### Recommendations

It is the recommendation of staff that the Park Board approve a site plan design, and recommend County Board approval.

# CASCADE OPTION 1



26-APR-2021 12:43  
PLOTTED/REVISED:  
MODEL\_2021 view  
P:\MISC\BYLLESBY\Cascade Canoe Launch\2021.dgn  
FILENAME



GOODHUE COUNTY  
DEPARTMENT  
OF PUBLIC WORKS

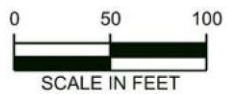
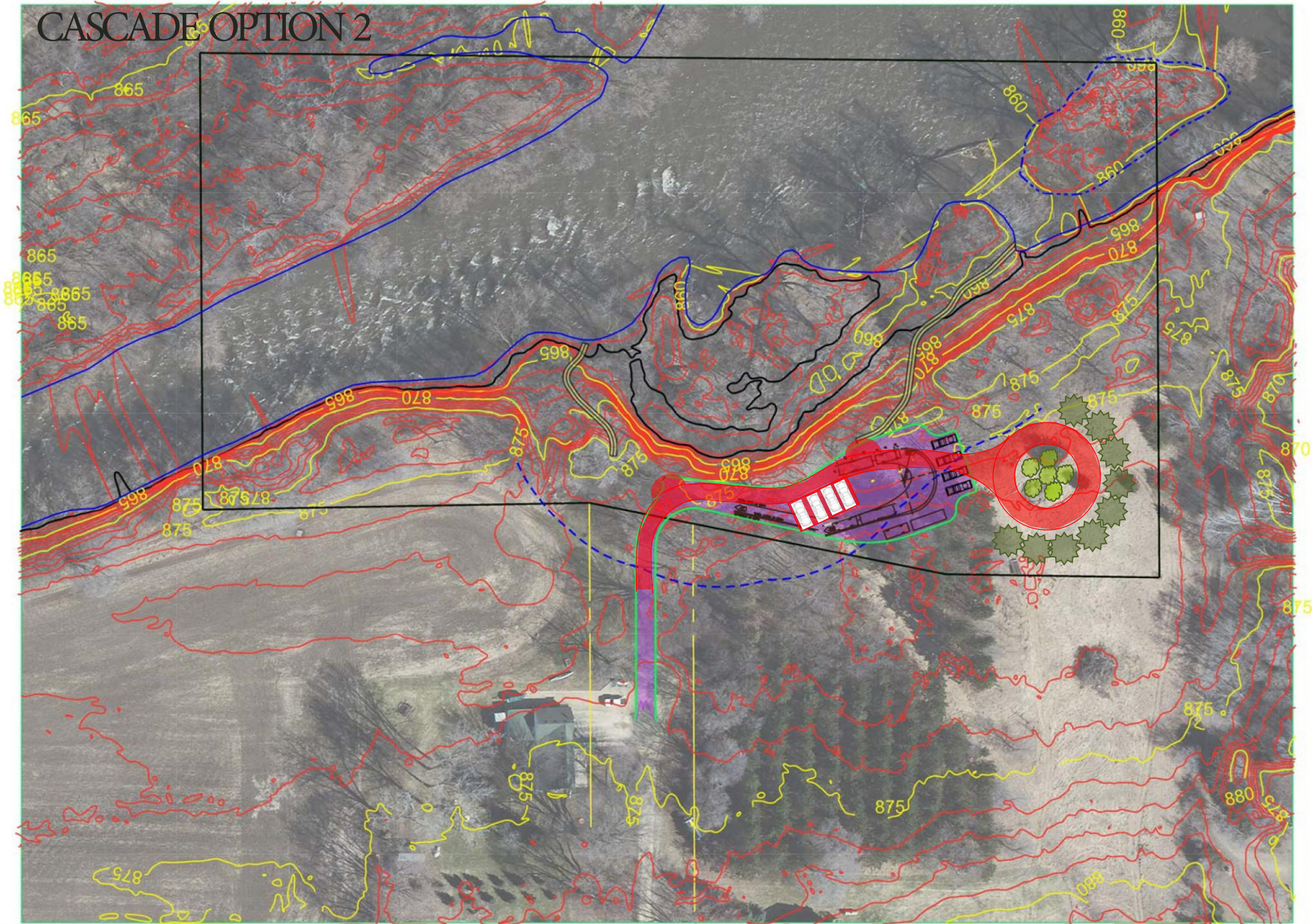


Goodhue County Project -

SHEET NO. 1 OF 1 SHEETS

# CASCADE OPTION 2

28-APR-2021 12:43  
PLOTTED/REVISED:  
MODEL V 2:  
PATH & FILENAME: P:\MISC\BY\LESBY\Cascade Canoe Launch\Cascade Canoe Launch 2021.dgn



GOODHUE COUNTY  
DEPARTMENT  
OF PUBLIC WORKS

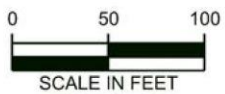
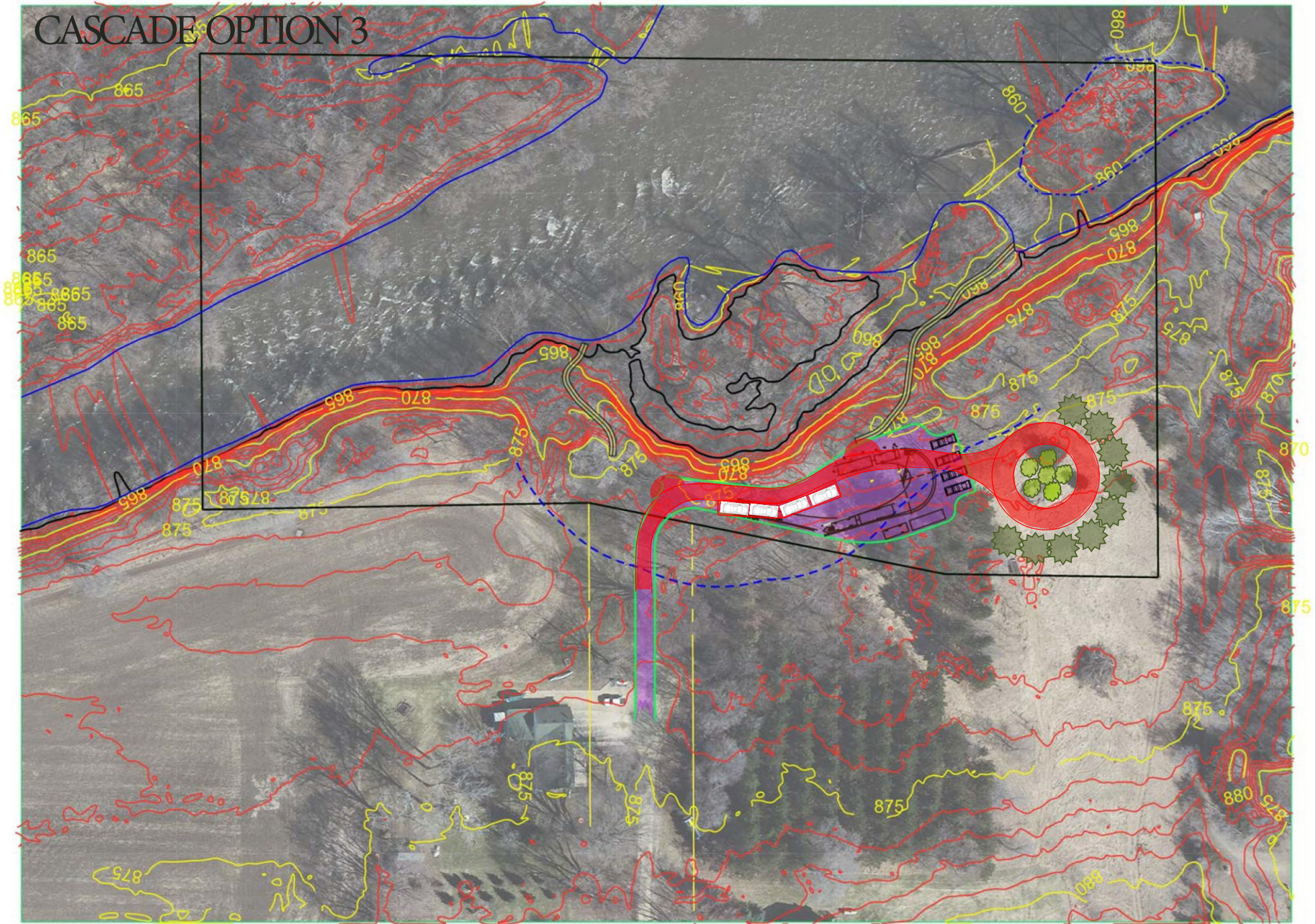


Goodhue County Project -

SHEET NO. OF SHEETS

PATH & FILENAME: P:\MISC\BYLLESBY\Cascade Canoe Launch\Cascade Canoe Launch 2021.dgn MODEL: V 2: PLOTTED/REVISED: 28-APR-2021 12:43

# CASCADE OPTION 3



GOODHUE COUNTY  
DEPARTMENT  
OF PUBLIC WORKS



Goodhue County Project -

SHEET NO. OF SHEETS



**Greg Isakson, P.E.**  
*Public Works Director/County Engineer*  
*Goodhue County Public Works Department*

2140 Pioneer Road  
Red Wing, MN 55066  
Office (651) 385-3025

TO: Goodhue County Parks, Trails, and Recreation Advisory Board

FROM: Greg Isakson, Public Works Director

RE: 11 May 21 Park Board Meeting  
**Aquatic Invasive Species Removal Lane**

Date: 06 May 21

#### Summary

It is requested that the Park Board approve a revised location for an Aquatic Invasive Species (AIS) removal area, and consider constructing a small covered shelter for the inspector.

#### Background

The Park Board has had several discussions regarding the high priority of protecting the lake. Discussions with the AIS inspector at Byllesby Park (as contracted by the DNR) late last summer brought up several concerns with AIS boat inspections and traffic flow issues in the boat trailer parking lot/near the boat ramp.

At that time, Goodhue County had already received a CUP from Stanton Township to construct an AIS removal lane on the west side of the boat trailer parking lot, close to the proposed location for the future fish cleaning structure. However, the AIS inspector explained that she needs to be able to stop boats as they come into the parking lot, as well as before they leave the parking lot.

By moving the AIS lane to the south side of the parking lot, the inspector would be able to stop boats that are entering as well as exiting. The fish cleaning station could also be moved closer to this area so a hose would be in close proximity for people to rinse off their boats. Public Works evaluated the grades in this area and both the south and west sides of the boat trailer parking lot would be suitable locations for adding an AIS removal lane. The company that performed the AIS inspections last year was supportive of both locations as well. If the Park Board is agreeable to the revised location, staff will seek a revision to the Stanton Township CUP, and move forward with the AIS grant. Public Works Highway Maintenance staff could install the base material for the lane this fall, and bituminous paving could take place as part of the 2022 paving contract next summer.

#### Alternatives

- Approve the revised AIS location on the south side of the parking lot and pursue AIS grant funding to complete the project.
- Hire a consultant to further explore design options for this project.
- Consider building a small shade structure for the inspector.



### Recommendations

It is the recommendation of staff that the Park Board approve the revised AIS location and proceed with this project and a small shade structure.



**AIS OPTION 1**



**AI5 OPTION 2**



**AIS OPTION 3**

3. Versatility since it can work well at access sites of all sizes and locations,
4. Flexibility with implementation, site administrators can incorporate all or just a few of the suggested components,
5. Low initial investment, and
6. Minimal maintenance costs in the absence of vandalism

**The site requirements for boat clean and drain areas include:**

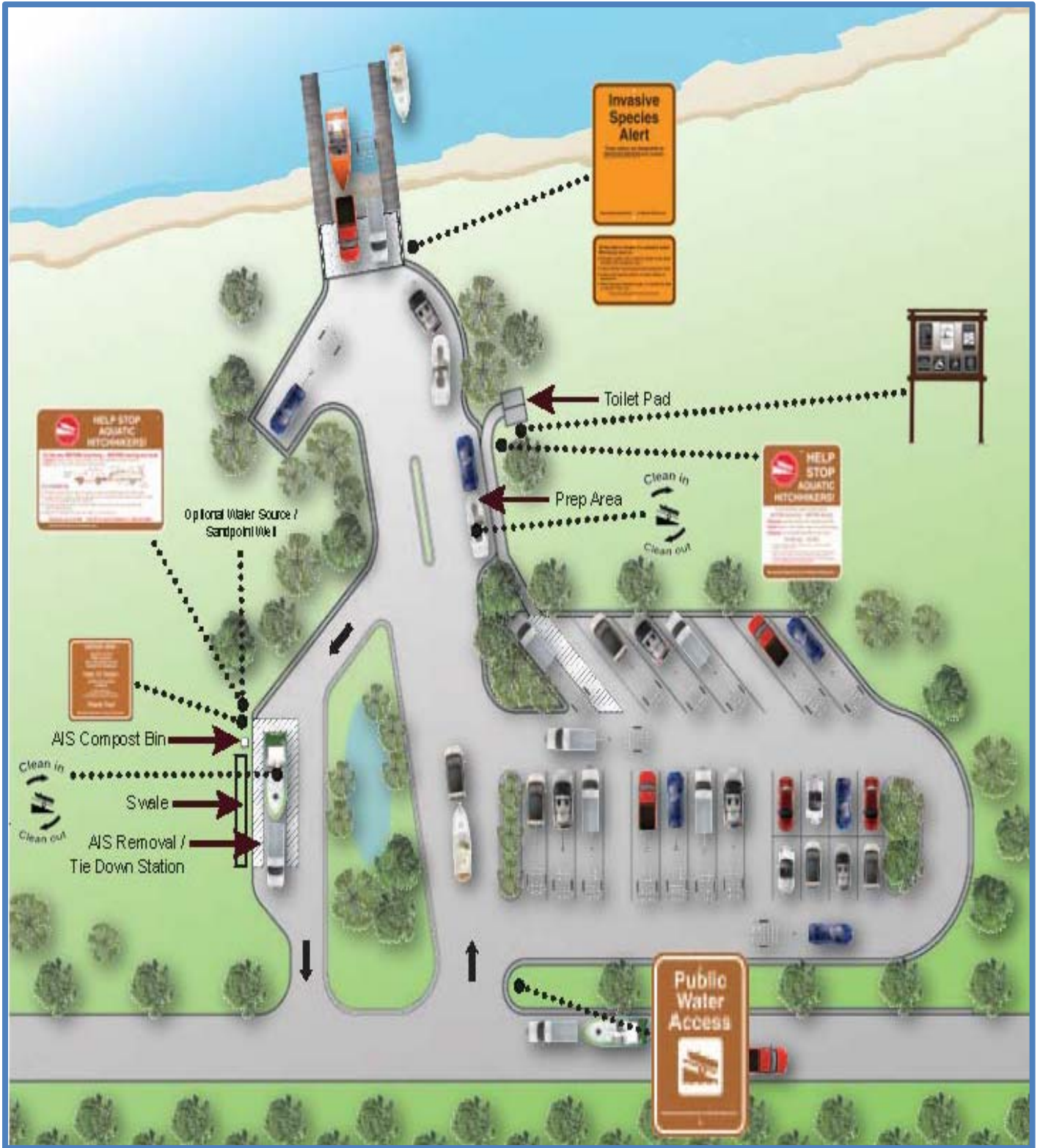
1. A large area of 21' x 54' (i.e., an 11' x 49' trailer parking stall surrounded by a 60" aisle along the side and rear) is needed for user safety and to meet Americans with Disabilities Act (ADA) requirements,

2. A level site, no more than a 2% slope in any direction for ADA accessibility, and
3. Drainage away from the waterbody (preferably into its own filtration catchment or swale).

It should be noted that, as with many site improvements, components of clean and drain areas can be subject to vandalism, accumulation of litter, or theft. Additionally, when boating access sites are unstaffed, clean and drain facilities can be misused or underutilized by boaters.

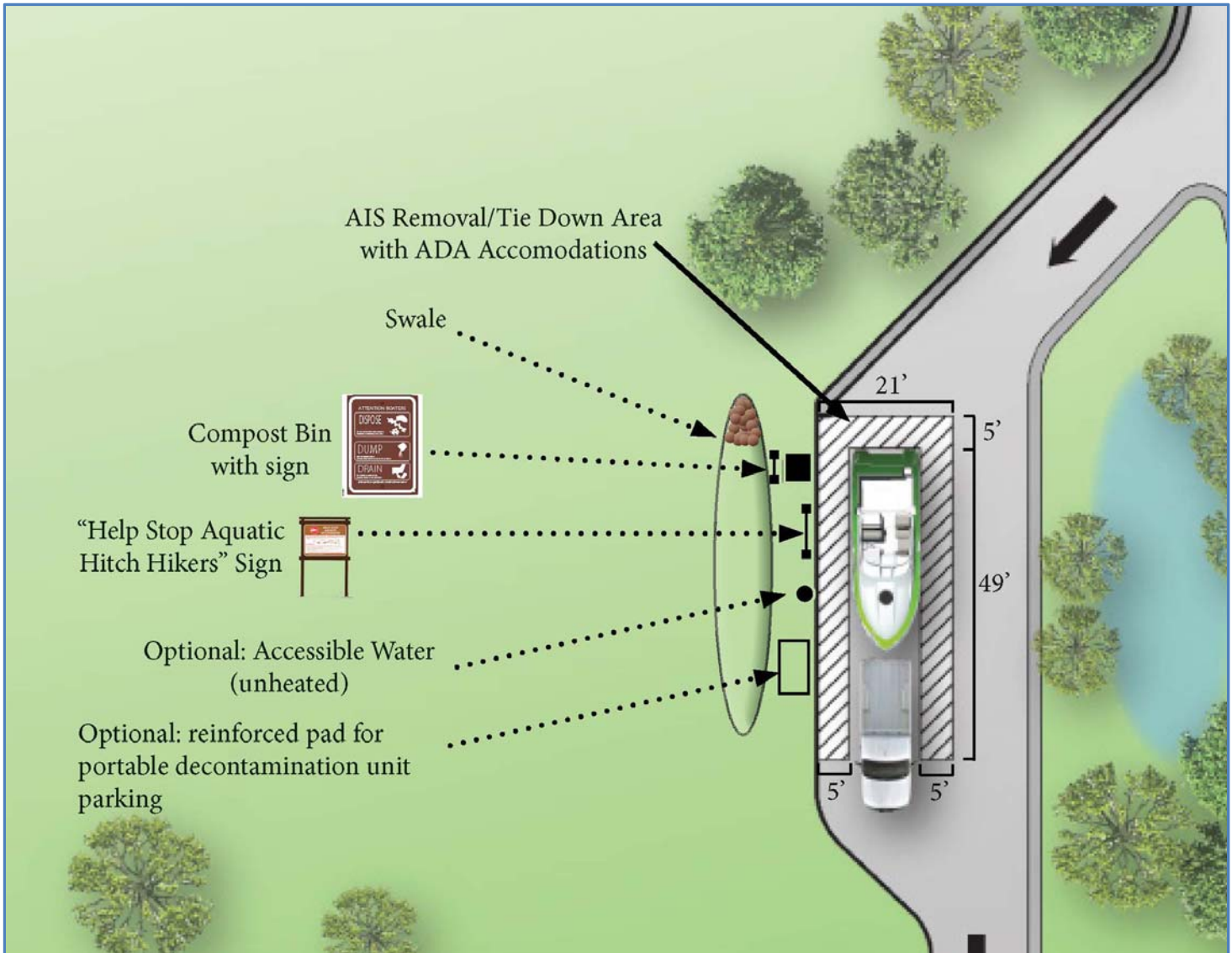


*A clean drain and dry area with sign, disposal bin, and pavement stencil/parking box (MN)*



**Example site layout**

Below is an example of a site designed by Minnesota DNR with all of the suggested components for an AIS activity area. Layouts would vary by site based on design and use patterns (MN).



**Example tie-down layout with clean and drain components**

Below is an example of a tie-down area designed by Minnesota DNR that incorporates clean and drain components.



**Greg Isakson, P.E.**  
*Public Works Director/County Engineer*  
*Goodhue County Public Works Department*

---

2140 Pioneer Road  
Red Wing, MN 55066  
Office (651) 385-3025

TO: Goodhue County Parks, Trails, and Recreation Advisory Board

FROM: Greg Isakson, Public Works Director

RE: 11 May 21 Park Board Meeting  
**Byllesby Park Message Board**

Date: 06 May 21

#### Summary

It is requested that the Park Board select a style and approve the purchase of a message board for Byllesby Park.

#### Background

Byllesby Park does not currently have a place to post park rules, blue green algae notices, COVID warnings, and other information, other than stapling laminated signs to picnic shelters or having permanent metal signs made, which is expensive. A message board would provide a permanent location for this information.

Matching smaller message boards could be purchased at a future time for posting reservations at the picnic shelters.

Part of the Byllesby Park Master Plan focused on community connections. A message board could be a fantastic opportunity for this. An optional brochure rack would allow local businesses to provide flyers and event information to park users. Mill Towns State Trail and Cannon Valley Trail maps could also be provided or posted in the upper glass section.

#### Recommendations

It is the recommendation of staff that the Park Board select a style of message board to install at Byllesby Park, approve purchase of the message board, and select a location for its installation.





Viewing area 42" wide x 28.25" high, Double sided  
 Inground posts is \$1,479; \$277 to add brochure rack (shown); approximately \$200 to upgrade to a black recycled rubber backing; shipping is about \$275. **\$2231**



Viewing area 41.5" wide x 42" high, Single sided  
 Inground posts is \$1,299; no brochure rack option for this item; approximately \$200 to upgrade to a black recycled rubber backing, shipping is about \$275. **\$1774**

**SELECT COLOR\***



Colors: black, brown, cedar, tan, evergreen, or gray



Three sided kiosk, viewing area 28.25" wide x 42" high x3  
Inground posts is \$3,000; no brochure rack option for this item; approximately \$200 to upgrade to a black recycled rubber backing, I am guessing shipping is about \$575, as it is based on weight (370 lbs vs 176) unless there is a price break point in weight. **\$3775**



We could later purchase smaller boards for reservation postings to match the larger message board. These could be freestanding or mount to the picnic shelters. Looks like these cost \$350-450 plus shipping.

# Cannon Valley Trail Update

- 1) We plan to install a second Electric Vehicle Charger this year
- 2) Plan to install \$10,000 worth of access monument signs
- 3) Plan to install 2 vault toilets (Mile 4.3 at Anderson Memorial Rest Area and Mile 15.5 Cannon Bottom Road)
- 4) October construction will begin to replace 4 bridges (the Red Wing end of the trail will be closed until June 2022)
- 5) 91,000 people used the CVT in 2019 – 172,00 people used the CVT in 2020
- 6) June 5<sup>th</sup> the CVT will host an “Open House” – Trail will be free for the day and special events will take place

Submitted by Scott Roepke

# GOODHUE PIONEER STATE TRAIL UPDATE

- 1) Survey work is currently in progress on a piece of property that would extend the trail from Zumbrota out to CSAH 6.
- 2) BIG NEWS! The Hawkinson property, which has been in the acquisition process for years, was sold to Parks and Trails about six weeks ago. Parks and Trails will hold this property until the DNR can buy it from them. This was a crucial link that will extend the trail past Hay Creek and then connect several miles of State land.

Submitted by Roxanne Bartsh